

At a Glance

Christmas show

CARROLL - Students in grades K-4 at Carroll Elementary will be giving their annual Christmas program Monday, Dec. 10 at 7:30 p.m. in the Carroll Auditorium. The program is free and open to the public.

Commodities

AREA - The Wayne office of the Nebraska Department of Social Services will be distributing food commodities at area locations:

Carroll — On Thursday, Dec. 6 from 9:30 to 10:30 a.m. at the Fire Hall.

Hoskins — On Thursday, Dec. 6 from 1 to 1:30 p.m. at the Fire Hall.

Winside — On Thursday, Dec. 6 from 2 to 3 p.m. at the Winside City Auditorium.

Wayne — On Friday, Dec. 7 from 9 a.m. to 1 p.m. at the Wayne Social Services Office.

A Social Security card and proof of residence, such as a utility bill, are necessary for identification. Food items cannot be picked up for another household unless the Social Service office has a statement of income verification and written permission from the household.

Winter concert

WAYNE - Wayne State College will present its annual Winter Band Concert Thursday, Dec. 13 on the college campus. The performance is free and open to the public.

The concert will be held in the Peterson Fine Arts Building's Ramsey Theatre at 8 p.m.

Tickets available

WAYNE - Tickets are still available for Wayne State College's 1990 Elizabethan Christmas Dinners being performed by the Wayne State Madrigal Singers. Performance dates are Friday through Sunday, Dec. 7-9, in the college's student center.

Tickets, which are \$13, may be purchased in room 109 of the Peterson Fine Arts Building at Wayne State, or by sending a check and a self-addressed envelope to: Christmas Dinners, Wayne State College, Wayne, Neb. 68787.

Gulf crisis forum

WAYNE - A forum on the Persian Gulf Crisis will be held on Thursday, Dec. 6 from 12:15 to 1 p.m. in the Nebraska Room of the Wayne State College student center.

The meeting is being held to allow the public to express concerns about the crisis and for discussion about the possibility of offensive action against Iraq. Those attending will be given information about what can be done to make their position about the crisis known.

The meeting is being led by history professor Kent Blaser and English professor Sayre Anderson. All members of the Wayne community are free to attend this meeting.

Winter sports

AREA - The annual winter sports are being recognized in a special section in today's Wayne Herald. Included in the special winter sports section are previews of Laurel, Winside, Wakefield, Allen and Wayne winter sports.

An added extra to this year's winter sports section is addition of the all-area volleyball and football player-of-the-year and the all-area volleyball and football coach-of-the-year.

Help sought

AREA - A need exists for entertainment materials for the men and women in Middle East who are serving the United States as a part of Operation Desert Shield.

In an effort to fill this void, the Northeast Nebraska Life Underwriters are initiating efforts to gather such items as paperback books, card decks, hand held games, various board games, magazines and other materials.

The items can be brought to the Aid Association for Lutherans office at 110 W. 1st St. during regular office hours prior to Dec. 15.



Photography: Mark Crist

Santa and Mrs. Claus arrive

DURING OPENING NIGHT AT THE 'Fantasy Forest 1990' Santa and Mrs. Claus made their arrival to Wayne official. Seated on Santa's lap is Marty Schmolli, a 3-year-old from Wayne; and visiting with Mrs. Claus is Emille Osten, a 2-year-old from Wayne. These two youngsters, along with a number of others, got their chance to tell Santa and his wife what they want for Christmas.

Channel One getting mixed reviews

By Mark Crist
Managing Editor

Channel One — the news programming geared for middle and high school students which may hit Wayne High School airwaves in the fall — has gone through mixed reviews in a number of Nebraska communities. Some school districts have nixed bringing Channel One into schools while a number of others have accepted it or are in the process of accepting it.

Wayne High School is one of the most recent schools to be approached by Whittle Communications, the parent company of Channel One.

The programming, which has been banned outright in a number of states, is a 12 minute daily news and information program designed to make news relevant to the concerns and studies of teenagers. It offers students an opportunity to digest the day's events and link the importance of those events to their lives, according to information supplied for an article in the Nov. 15 edition of The Wayne Herald.

FOR A VARIETY of reasons, Channel One has fallen under scrutiny.

Week two Chamber drawing winners listed

WAYNE - The Wayne Area Chamber of Commerce announced its week two Holiday Magic Cash winners Thursday as 27 winners names were drawn for total winnings of nearly \$500.

Named in the list were: Marvin Meier, Wayne, who won \$20 from Wayne Grain and Feed; Cherry Urwiler, Laurel, who won \$4 for Swan's; Erin O'Donnell, Wayne, who won \$10 from PoPo's II; Paul Henschke, Wayne, who won \$8 from Wayne Vets Club.

Viola Kubik, Thurston, who won \$38 from Four in Hand; Ed Wolske, Wayne, who won \$14 from Pac 'N' Save; Cindy Meyer, Wayne, who won \$25 from The Wayne Herald; Cheryl Sherry, Wayne, who won \$23 from Surber's.

Berniece Fulton, Wayne, who won \$11 from Pamida; Mike Sievers, Wayne, who won \$50 from Koplín Auto Supply; Marilyn Rethwisch, Wayne, who won \$15 from The Black Knight.

Bernice Frederick, Randolph, who won \$4 from Johnson's Frozen Foods; Richard Janssen, Winside, who won \$19 from Pac 'N' Save; Lois Siefken, Wayne, who won \$8 from Touchstones.

Randy Milligan, Wayne, who won \$17 from Zach Oil Company; Irene Victor, Wakefield, who won \$33 from Charlie's Refrigeration; Don Sund, Wayne, who won \$5 from The Wayne Herald.

Melvin Myers, Wayne, who won \$25 from Trio Travel; Elaine Francis,

One reason is because the 12 minute programming carries 2 minutes of commercials from companies such as Burger King, Nike, Mars Candy and Columbia Pictures. Some of the advertising, however, is to promote keeping students in school and to keep them off drugs.

Another reason the programming has been criticized is because it would create a captive audience.

One reason why it's being considered in the Wayne Public Schools, according to Supt. Dr. Francis Haun, is because it provides Wayne not only technology it has never seen before, but because it's technology the school probably would never be able to afford on its own. While WHS students would not be required to watch the programming, there is a clause in the proposed Whittle contract with the school that 90 percent of the student population has to watch it.

"There has been a push to have cooperation between business and education at the highest levels of our government," he said. "President Reagan emphasized it and President Bush has done the same. I think this is the beginning of a trend where you see increased corporate sponsorships in the schools."

ACCORDING TO a recent article in the Scottsbluff Star-Herald, the Gering Public Schools recently turned away Channel One because the school board saw undertones of George Orwell's "1984", where young minds were a captive audience to Big Brother. Similar concerns have been expressed in the American School Board Journal and Channel One has received no support from any school association, Haun said.

But at Grand Island Northwest and the Alliance, Neb. Public Schools, Channel One has been accepted with open arms.

Crete Public Schools recently gave approval to an amended contract with Channel One, which would bring the programming into the school at the start of classes for the 1991-92 school year pending Whittle approval of the contract. Similar discussions are being conducted with the Plattsmouth Public Schools and the Scottsbluff Public Schools. According to information in the North Platte Telegraph, North Platte schools may be bringing in Channel One in the fall, as well.

"I don't see that this is influenced at this point by any political motivation," Haun said. "I don't see

them trying to influence minds into thinking anything other than the truth."

THE MARKET, according to Whittle Communications, is lucrative so long as contract stipulations between Whittle and schools are followed.

According to a report in the American School Board Journal, Whittle predicts that a year from May 1990, some 7,000 schools and six million students will be tuned in to their programming. Chris Whittle, owner of the corporation, says that the program has attracted \$200 million in advertising commitments for the first three years, at \$150,000 per 30 second spot.

The package Whittle offers schools, allows schools a free lease of television sets, VCR's and a satellite dish but the contract bars schools from using the televisions to watch "direct competitors." The only similar competitor currently to Whittle is CNN, which broadcasts a similar program suited to teenagers. If schools use Whittle's technology to bring in other competing broadcasts, they will violate their contract with Whittle and the company will remove the technol-

ogy from the schools, the article said.

If the programming is brought into the Wayne Community Schools, the contract calls for a television set and VCR for every 23 students.

WHILE THE CONCEPT of watching TV news as a substitute for reading newspapers or magazines has been part of the controversy surrounding Channel One, Dr. Haun said he doesn't believe that's necessarily the case in Wayne.

This issue was addressed by the Gering School Board when they decided to turn away Whittle. One board member said there are other ways to know what's going on in the world.

Dr. Haun said faculty in the middle school and high school have given approval to the broadcasts, as has the Wayne Student Council. He said the sophistication of the technology has impressed students and faculty, alike.

"Research indicates that youth learn more from TV than from newspapers and magazines," he said. "The visual conceptualization is something they pick up on better."



Photography: LaVon Anderson

SHANNON AND PAM AHLMAN take new approach to earning college money.

College couple try their hands at violet business

By LaVon Anderson
Assistant Editor

Owning and operating a business while at the same time managing a hectic college schedule may not seem like the ideal situation, but for Shannon and Pam Ahlman, their hours spent in The Violet Showroom are "therapeutic."

Shannon and Pam are both fifth year seniors at Wayne State College and this past August turned their hobby into a business venture when they opened the doors to The Violet Showroom, located in the Mineshaft Mall at 112 East 2nd St.

"It's fun and it's relaxing," says Pam of her hours spent in The Violet Showroom.

Shannon agrees that after a heavy day of classes it's nice to retreat to The Violet Showroom. "We love it when people stop by for advice or just to talk violet talk."

"The advice is free," smiles Pam, "and we've definitely become plant doctors."

SHANNON, a native of Wausa, and Pam, a native of Grand Island, met during their freshman year at Wayne State and were married nearly a year and a half ago.

See VIOLET, page 3A

Support shown for issue Conway pleased with area voter support for LB 1059

By Mark Crist
Managing Editor

When the dust settled from the Nov. 6 election, Dist. 17 Sen. Gerald Conway knew he had done his job.

Of the 93 Nebraska counties, three of those in the district Conway represents had shown strong support for LB 1059. In fact, those three counties in the District 17 senator's area were in the top 10 of the state's supporters and the leading legislative district in favor of retaining the bill.

Dixon County finished second among all counties in the state in support of LB 1059, just six-tenths of a percent behind top-finisher Dawes County with 75.1 percent support. Dakota County finished third in support of the measure with 72.5 percent of the vote in favor of keeping LB 1059 and Wayne County finished ninth with 70.2 percent support for the bill.

LB 1059 is the school refinancing measure which reduces schools dependence upon property tax levies by shifting the burden with increases in sales tax and income tax.

"WHAT WE HAD before LB 1059 was very efficient school systems but our property tax burden was very high because we didn't have the wealth to support the system," Conway said. "Since the passage of the bill, school districts have done very well. Wakefield, for instance, will pick up \$300,000 in



Gerald Conway

state aid which it didn't have before and that's equivalent to 200 new homes in the \$60,000 price range. That will help that particular school quite a bit."

A similar scenario was repeated in the Emerson-Hubbard Schools and especially the South Sioux City Schools. Each of those school systems had taxpayers paying extremely high levies but with decreased educational service.

CONWAY, WHO said he spoke to several organizations about the positive effects of LB 1059 during the campaign said he was impressed at the response of Nebraska voters.

He said in this year's election, unlike any other during his lifetime, voters really had to study the issues before them before going to the polls because of all the white-washing by groups on opposite

See CONWAY, page 3A

See DRAWING, page 3A



Mr. and Mrs. Stacy Thomas

Culbertson-Thomas exchange vows in Concord ceremony

The marriage of Brenda Culbertson and Stacy Thomas, both of Dixon, was solemnized in Nov. 23 rites at St. Paul's Lutheran Church, rural Concord, with the Rev. Richard Carner of Wakefield officiating.

The bride is the daughter of Mr. and Mrs. Charles Culbertson of Sioux City. Parents of the bridegroom are Mr. and Mrs. Paul Thomas of Dixon.

Decorations for the 4:30 p.m. double ring rites included pink pew bows and altar bouquets of pink carnations and white pompons.

GUESTS attending the ceremony were registered by Susan Manning of Sioux City, and ushered into the church by Steven Stanley of Dixon and David Humphrey of Yankton, S. D.

Pat Humphrey of Yankton sang "Heavenly Father," "Hear Our Prayer," "Wedding Prayer" and "May the Grace of God." The congregation sang "Hear us Now, Our God and Father." Organist was Frances Kraemer of Laurel.

Maid of honor was Virginia Manning of Sioux City and best man was Jeff Nelson of Dixon.

ON HER wedding day, the bride wore a tea-length gown of pearl satin and lace designed and created by the bridegroom's sisters, Pat Humphrey and Sue Stanley.

The dress was fashioned with a lace bodice, a satin bow at the back waist and tiers of lace ruffles on the back of the satin skirt. The lace bodice and ruffles were accented with scattered pearls.

Congregate Meal Menu

(Week of Dec. 3-7)
Monday: Creamed chicken, green beans, peaches and cottage cheese, bar.
Tuesday: Roast pork, whipped potatoes, sweet and sour cabbage, gelatin cubes.
Wednesday: Barbecued meatballs, baked potato, mixed vegetables, gelatin and custard.

Thursday: Beef birds, cauliflower and sauce, pears, roll, cookie.
Friday: Salmon loaf, creamed potatoes, carrots, pasta salad, rye bread.

Coffee, tea or milk served with meals

November ceremony in Wayne unites Lisha Grone, Ryan Prince

Redeemer Lutheran Church in Wayne was the setting for the Nov. 3 rites uniting in marriage Lisha Grone and Ryan Prince, both of Hoskins.

The bride is the daughter of Lyle and Sandy Grone of Wayne. She was graduated from Lake Dallas High School in Texas in 1989.

The bridegroom, son of Russell and Lorraine Prince of Winside, was graduated from Winside High School in 1986 and attended Northeast Community College at Norfolk for one year. He is employed at IBP in Superior.

The newlyweds are making their home at 616 North National St., Superior, Neb., 68978.

THE REV. Franklin Rothfuss of Wayne officiated at the couple's double ring service at 6 p.m.

Music included "The Wedding Song," "God, a Woman and a Man" and "The Lord's Prayer," sung by LeNell Quinn of Winside. The congregation sang "O Perfect Love." Organist was Vera Hummel of Wayne.

Lana Prince of Winside and Brad Polt of Pierce were seated at the guest book, and ushers were Ron Prince of Winside, Roger Prince of Norfolk, and Bryan Grone and Mike Macke, both of Wayne.

THE BRIDE was given in marriage by her father.

Matron of honor was Shelly Jaeger of Winside, and bridesmaids were Shelley Henzler of Hoskins and Heather Pick and Jodi DeWald, both of Wayne. Junior bridesmaid was Ashley Grone of Wayne.

Serving as best man was Randy Prince of Winside. Groomsmen were Kevin Jaeger and Doug Jaeger, both of Winside, Jeff Grone of Wayne and Doug Paulsen of Hoskins.

Flower girl and ring bearer were Christina Jaeger and Jared Jaeger, both of Winside. Lighting candles were Jessica Macke of Wayne and Jared Prince of Norfolk.

For her daughter's wedding, Mrs. Grone selected a royal blue dress with blue accessories. The bridegroom's mother chose a light blue fashion with black accessories.

PAUL AND Lori Dean and Rick and Cathy Macke greeted guests who attended a reception in the church basement following the ceremony.

Cutting and serving the cake were Pam Prince of Norfolk and Kelly Grone of Wayne. Kathy Prince of Winside and Julie Grone of Wayne poured, and Marilyn Heier of Norfolk and Norma Janssen of Coleridge served punch.

Waitresses were Kim Brudigan and Sahra Painter, both of Hoskins, and Jessica Jaeger and Dannika Jaeger, both of Winside.



Mr. and Mrs. Ryan Prince

School Lunches

ALLEN (Week of Dec. 3-7)
Monday: Chicken fried steak, mashed potatoes and gravy, roll and butter.
Tuesday: School made pizza, corn, pears.
Wednesday: Chicken pattie on bun, mayonnaise (optional), tater tots, half apple.
Thursday: Ham pattie, baked beans, fruit salad, wheat rolls and butter.
Friday: Barbecued rib on bun, tri taters, half orange.
 Milk served with each meal

WAKEFIELD (Week of Dec. 3-7)
Monday: Cheddarwurst, corn bread and syrup, green beans, fruit, brownie.
Tuesday: Lasagna, garlic bread, peaches, relishes.
Wednesday: Chili and crackers, cinnamon roll, celery and carrots, half orange.
Thursday: Chicken pattie on bun, lettuce and mayonnaise, corn, pears, chocolate chip bar.
Friday: Salisbury steak, mashed potatoes, roll and butter, pears, cookie.
 Breakfast served each morning (25¢ students, 50¢ adults)

WINSIDE (Week of Dec. 3-7)
Monday: Ham pattie on bun, applesauce, baked beans.
Tuesday: Steak sandwich, crispy fries, pears, cookies.
Wednesday: Tacos with lettuce and cheese, fruit, cinnamon roll.
Thursday: Grilled cheese sandwich, onion rings, peanut butter bars.
Friday: Chili and cheese dogs, tater tots, carrot sticks, blackberries and cheesecake.
 Salad bar available daily for students in grades 6-12

New Arrivals

MANGELS — Mr. and Mrs. John Mangels, Winside, a son, Aaron Alfred, 7 lbs., Nov. 24, Lutheran Community Hospital, Norfolk. Grandparents are Mr. and Mrs. Alfred Mangels, Winside, and Mr. and Mrs. Delbert Heermann, Norfolk.

PRINCE — Ron and Kathy Prince, Winside, a daughter, Caitlyn Mae, 6 lbs., 1 oz., Nov. 28, Lutheran Community Hospital, Norfolk. Caitlyn joins a brother Collin, age five, and a sister Cassandra, two. Grandparents are Mr. and Mrs. Russell Prince, Winside, and Mr. and Mrs. Harold Ryan, Norfolk. Great grandparents are Mr. and Mrs. William Heier, Norfolk, and Mr. and Mrs. Cecil Prince, Winside.

Bridal Showers

Brenda Culbertson

DIXON — Brenda Culbertson of Dixon was guest of honor at a miscellaneous bridal shower held Nov. 17 at St. Paul's Lutheran Church, rural Concord.

Miss Culbertson, daughter of Mr. and Mrs. Charles Culbertson of Sioux City, and Stacy Thomas, son of Mr. and Mrs. Paul Thomas of Dixon, were married Nov. 23 at St. Paul's Lutheran Church.

Decorations for the bridal fête were in pink and white, with 25 guests attending from Yankton, S. D.; Laurel, Concord, Allen and Dixon. The program included devotions by Martha Smith, a reading by Marj Rastede and pencil games. Sue Stanley assisted the honoree with gifts and Mrs. Thomas, mother of the bridegroom, poured.

Hostesses were Marcia Rastede, Martha Smith, Frances Kraemer, Donna Stalling, Tillie Rastede, Marj Rastede, Celia Hansen, Donna Nelson and Delorus Koch.

POLICY ON WEDDINGS

The Wayne Herald welcomes news accounts and photographs of weddings involving families living in the Wayne area.

We feel there is widespread interest in local and area weddings and are happy to make space available for their publication.

Because our readers are interested in current news, all weddings and/or photographs offered for publication in The Wayne Herald must be in our office within 14 days after the date of the ceremony (no exceptions for holidays). There will be a \$10.00 flat fee for stories and/or photographs submitted after that time (up to two weddings).

Wedding photos to be returned should include a stamped, self-addressed envelope.

For questions concerning the Wayne Herald's wedding policy, contact LaVon Anderson, assistant editor, 375-2600.

Briefly Speaking

94th birthday observed

WAYNE — Mary Roberts, a resident of Wayne Care Centre, observed her 94th birthday on Nov. 26 during a party hosted by her daughter, Mrs. Ruth Kerstine of Carroll. Approximately 30 guests attended the event at the care centre.

Club meets for pasta dinner

WAYNE — Seven members of 3 M's Home Extension Club met for a pasta dinner on Nov. 19 with Delpha Keiser as hostess. Pearl Benjamin was a guest.

The "Make It With Pasta" lesson was given by Marj Porter. A demonstration on making noodles with the use of a pasta machine was given by Pearl Benjamin.

During the recent Achievement Program, the club received awards for spring tea attendance and 100 percent exhibiting in open class at the county fair. A report was given on Achievement Night.

The club will dine at the Black Knight on Dec. 17 at 6:30 p.m. There also will be a gift exchange.

The Jan. 21 meeting will be hosted by Jocell Bull.

Thanksgiving thoughts told at club

WAYNE — Pleasant Valley Club met Nov. 21 at Geno's Steakhouse for a noon meal. Leona Hagemann opened the business meeting with a Thanksgiving poem, and nine members responded to roll call with a Thanksgiving thought.

Minnie Heikes, an honorary member of the club, will be remembered on her 100th birthday in December. A Christmas gift will be given to a resident of Wayne Care Centre and Christmas stocking favors will be made for the hospital.

Louise Larsen was in charge of entertainment. Court Whist was played with prizes going to Ruth Fler, Leona Hagemann, Alta Baier and Hollis Frese.

The next meeting will be with Joanie Baier on Dec. 19, beginning at 1:30 p.m. There will be a \$2 Christmas gift exchange.

Report focuses on PEO project

WAYNE — Twenty-one members of Wayne PEO Chapter AZ gathered in the home of Diana Cramer on Nov. 20. Co-hostesses were Ginny Seymour and Nancy Warnemunde.

Mrs. Warnemunde reported on one of the newer PEO projects — the Continuing Education Fund. The project grants money (up to \$1,000) to deserving women who are seeking to further their education and find such matters as child care expenses to be a problem.

Kirk Swanson presented the program on Rose Rosicky, an early Nebraska journalist. Miss Rosicky, who lived in Omaha, promoted the Czech culture in Nebraska with her newspaper and her many translations of books and articles.

DAV Auxiliary meets

WAYNE — Wayne County Unit 28 of the Disabled American Veterans (DAV) Auxiliary met Nov. 13 in the Wayne Vet's Club room with six members in attendance. Senior Vice Commander Verna Mae Longe conducted the meeting in the absence of Commander Eveline Thompson.

Verona Bargholz reported on the recent DEC meeting she attended in Kearney. The auxiliary is planning to purchase a Christmas gift for a resident of Wayne Care Centre.

The auxiliary will play bingo with residents of the Norfolk Veterans Home on Dec. 3 at 2 p.m. Taking cookies for lunch will be Eveline Thompson, Verona Bargholz, Neva Lorenzen and Ruth Wacker.

Verna Mae Longe served lunch following the meeting. The auxiliary will meet again on Dec. 11 at 8 p.m. at the Vet's Club. Members and their spouses are asked to bring gifts for a gift exchange and a plate of cookies for lunch.

Alzheimer's support group meeting

AREA — The Northeast Nebraska Alzheimer's Family Support Group will hold its next meeting on Monday, Dec. 10 at 2 p.m. at the Pierce Manor in Pierce.

The primary emphasis of the group is to support friends and families who are caring for victims of Alzheimer's disease. The support group also addresses educational information about Alzheimer's disease and its affect on family members and caregivers.

Persons wishing additional information about the group are asked to call Donna Halsey, 329-6228.

Out-of-town guests visit

WAYNE — Dr. Gary, Sandra, Lisa and Kent Lorenzen of Lincoln were guests last weekend in the Neva Lorenzen and Kenneth Olds homes in Wayne.

Mr. and Mrs. Richard Johnson of Wakefield were Nov. 23 evening guests in the Lorenzen home.

Anniversary guest omitted

HOSKINS — Jeannine Amundson of Norfolk was inadvertently omitted from the list of guests who helped Mr. and Mrs. Emil Gutzman of Hoskins observe their golden wedding anniversary on Nov. 22.

The story appeared in the Thursday, Nov. 29 edition of The Wayne Herald.

Community Calendar

MONDAY, DECEMBER 3

Wayne Eagles Auxiliary
 Wayne Evangelical Free Church Christmas banquet, 6:30 p.m.
 American Legion Auxiliary Christmas party, Vet's Club room, 8 p.m.

TUESDAY, DECEMBER 4

Sunrise Toastmasters Club, City Hall, 6:30 a.m.
 Hillside Club luncheon, Geno's Steakhouse, 11:30 a.m.
 Central Social Club covered dish luncheon and gift exchange, Cleva Willers, noon
 Villa Wayne Tenants Club weekly meeting, 2 p.m.
 Tops 782, St. Paul's Lutheran Church, 6 p.m.

WEDNESDAY, DECEMBER 5

Villa Wayne Bible study, 10 a.m.
 Cuzins' Club, Geno's Steakhouse, noon
 Alcoholics Anonymous, Wayne State College Student Center, noon
 Presbyterian Women's Christmas tea, 2 p.m.
 Tops 200, West Elementary School, 6:30 p.m.
 Alcoholics Anonymous, Fire Hall, second floor, 8 p.m.
 Al-Anon, City Hall, second floor, 8 p.m.

THURSDAY, DECEMBER 6

People Are Loved (PAL) Christmas party, First United Methodist Church
 Logan Homemakers Club Christmas party, Black Knight, 6:30 p.m.

FRIDAY, DECEMBER 7

BC Club Christmas luncheon, Black Knight, 11:45 a.m.

SATURDAY, DECEMBER 8

Alcoholics Anonymous, Fire Hall, second floor, 8:30 a.m.

SUNDAY, DECEMBER 9

Wayne PEO Chapter 1D, Karen Marra

MONDAY, DECEMBER 10

Acme Club Christmas meeting, Lillian Berres
 Minerva Club Christmas luncheon, Black Knight, 11:45 a.m.
 Wayne Chapter 194 Order of the Eastern Star, 7:30 p.m.
 VFW Auxiliary Christmas party, Vet's Club room, 8 p.m.

Wayne Hospice gets grant

The St. Francis Memorial Hospital Foundation in West Point has awarded a \$5,000 grant to the Community Care Hospice Group, headquartered in Wayne.

"We are very pleased and impressed with the work the program is accomplishing and wish its continued success," said Harold Wimmer, chairman of the foundation board.

According to Wanda Kucera, director of the Community Care Hospice Group, the financial support was directed to the program's

general fund for operating expenses.

"The financial support is very significant for our program," said Kucera. "We do not receive any tax or federal funding, but rather rely on the communities at large which we provide services for our support."

"We can do a lot on a little, but we still have costs. This endorsement and support by the St. Francis Memorial Hospital Foundation will significantly assist the hospice program to continue and progress."

KUCERA explained that the two and a half year old volunteer program provides support services to persons with terminal illnesses and their families within an area covering 16 communities of north-east Nebraska, including the West Point area.

Kucera said services are provided by trained volunteers in the areas of practical, emotional and spiritual support.

"We do not provide skilled nursing assistance, but do work closely with the doctor, home health nurses, other medical staff,

clergy and, of course, the family," said Kucera, adding that all hospice services are provided at absolutely no cost or obligation.

PERSONS wishing additional information concerning services provided by the Community Care Hospice Group are asked to call 375-1628.

Inquiries regarding contributions to the group in time, services or donations may also be made by calling the above number.

The Principal's Conway—Office

By Donald V. Zeiss

With the start of the winter sports season upon us attention should be focused on the Nebraska School Activities Association Sportsmanship Code which is as follows:

All participants and fans should:

- Remember high school sports are a part of the educational process.
- Maintain self-control at all times.
- Show support and enthusiasm by cheering your team, not degrading your opponent.
- Applaud outstanding performances of all athletes.
- Know, understand and appreciate the rules of the contest.
- Respect the effort and decisions of contest officials.

We encourage all in attendance at school activities to be gracious losers and humble winners.

Honors recital on Monday

WAYNE - Wayne State College will present an honors recital tomorrow (Tuesday) on the college campus. The performance is free and open to the public.

The recital will be held in the Peterson Fine Arts Building's Ramsey Theatre at 8 p.m.

Student performers are selected by music instructors of the applied music courses, according to Dr. Jay O'Leary, division head of fine arts at Wayne State.

Jensen scores big in forensics competition

WAYNE - Ten years ago, Gwen Jensen would not have been considered your typical college student.

Today, as a non-traditional student, she's setting new standards in forensics competition.

Jensen, a sophomore majoring in theatre and broadcasting, recently competed in a forensics tournament as a member of the Wayne State team and much to her team's and adviser's surprise, she won all four of the events she competed in.

"Gwen is a unique person but to win four events is uncommon, in itself," said Ron Whitt, co-adviser for the WSC forensics team. "I'm not sure I've ever had a student win all four events. It's really a remarkable thing."

JENSEN COMPETED in the maximum number of areas she

could of the 10 possible. In her competition, she won top honors in poetry interpretation, dramatic interpretation from a play, informative public address and oratory (persuasion). She competed with a number of other students representing 10 schools in Nebraska.

"I was able to do so well because it was held here," she said. "When we go out of town, you go to different buildings but here I know where everything is at so I was just more relaxed."

Jensen gained her interest in the field by taking a speech class as one of her general electives. It was from that class that she developed her interest in forensics competition.

COMPETING IN the four specific areas she took part in, she performed without the use of her

legs and without the use of one hand, which are strict guidelines in the competition. Her readings were developed from poems by Judith Viorst on mature adulthood; literary works from the novel "Shirley Valentine"; concepts developed to reduce global warming and global dumping of toxic waste from industrialized nations on third world countries.

Her explanation of how she competed was simple: "We have great coaching in Ron and Deb Whitt," she said. "They did an excellent job."

According to Jensen, emotion in the areas she addressed is through facial expression and voice fluctuations. She said you create the character without moving around and try to duplicate the character without movement.

Whitt said speech activities have been around for over 100 years and it is one of the basis for



Gwen Jensen

what schools are striving to have students become.

"It teaches them (students) skills you'd like to have your people have in the workplace," Whitt said.

Violet

(continued from page 1A)

"Violets were Shannon's hobby," smiles Pam, adding that the couple's wedding money was used to purchase violet shelves and a couple of shop lights. "We also ordered 16 varieties of leaf cuttings," says Shannon.

Pam adds that her interest in African violets was pretty "hoo hum" until she attended a violet show with Shannon in Kansas City shortly after their marriage.

"It was incredible," recalls Pam, "and it was definitely a turning point for me."

SHANNON'S collection slowly grew from two shelves on a wall to two stands housing approximately 90 violet plants.

"We moved from an apartment into a house, and when we outgrew that house we moved into a bigger house," laughs Pam.

Although the young couple conducted business from their home for a short time and sold their violets wholesale to Wayne Greenhouse, Pam said the violets eventually took over and it was then that she and Shannon decided to open for business in the Mineshaft Mall.

"We also needed to get the violets into a more stable environment," explains Pam, who credits Lois Hall of Wayne Greenhouse for helping and encouraging them in their new business venture.

TODAY, The Violet Showroom includes over 130 varieties of African violets, with over 800 plants to choose from in various

shades of red, white, pink, purple and blue.

Shannon said prices range from \$4 to \$6, depending on the number of blossoms, and there are starter plants of almost every variety available for \$2.50.

All of the plants are set up with the wick method of watering by filling a reservoir with fertilized water and allowing the plant to drink on its own.

"You only have to water the plant about every two weeks and you never have to worry about it drying out or being over watered," explains Shannon, adding that the wick method is not only good for the plant but convenient for the plant owner.

In addition to plants, The Violet Showroom sells all of the necessary plant supplies including pots, wicks, reservoirs, soil, fertilizer, leaf supports and trays, pot covers and baskets.

The Ahlmans say they will also do repotting and offer whatever advice they can to African violet owners.

The Violet Showroom also features craft and wood items on consignment — offering still more variety for shoppers.

SHANNON, a voice performance major, and Pam, a music history and music composition major, say their college schedules make it impossible to maintain normal business hours at The Violet Showroom.

Shannon also is employed at The Dairy Queen and Pam gives private piano lessons. In addition, both are active in various other community events.

"We have some kind of funny hours," laughs Pam, adding that The Violet Showroom is open each Monday from 9 a.m. to noon, Tuesdays from 9 a.m. to noon and from 2 to 5 p.m., Thursdays from 9 a.m. to noon and 2 to 9 p.m., and Saturdays from 10 a.m. to 2 p.m.

"Everyone has understood and been very good about our schedule," says Pam, adding that both she and Shannon encourage persons to call their home, 375-3717, for an appointment if they can't come in during the hours the store is open.

"The Ahlmans say violets make wonderful gifts and they will deliver plants in town."

"Or just stop in and visit," says Shannon. "Pam and I love to talk violets."

WAYNE COUNTY JAYCEES
CHRISTMAS TREE SALES
 MONDAY THROUGH FRIDAY
 OPEN 5:30 PM TO 8:30 PM
 SATURDAY 10 AM TO 4 PM
 SUNDAY 12 NOON TO 5:00 PM
 Mineshaft Mall, 114 East 2nd Street Wayne, NE

HOLIDAY MAGIC CASH

S-T-R-E-T-C-H your holiday cash! The State National Bank & Trust Co. will help by giving

\$105 in Chamber Bucks for \$100 cash

to area residents starting November 19, 1990! For each \$100 in cash you will receive \$105 in Chamber Bucks redeemable at any member business of the Wayne Area Chamber of Commerce...

This special limited supply offer is available ONLY at State National Bank & Trust Company in Wayne under the following rules:

1. Chamber Bucks must be purchased in \$100 cash amounts only.
2. \$105 in Chamber Bucks is the limit per person.
3. This Holiday Magic Cash must be used by March 31, 1991.
4. You must personally make the purchase at either of our locations.

CHECK WAYNE FIRST

Happy Holidays from



The State National Bank and Trust Company

Wayne, NE 68787 • 402/375-1130 • Member FDIC
 Main Bank 116 West 1st • Drive-In Bank 10th & Main



DISTRICT #25 TEACHER: TAMI DIEDIKER

FIRST GRADE (top left photo) front, from left: Andrew Beckman, Sara Jane Meyer and Sherry Webster; back: Ross Hansen, Kristin Morse and Erin Svoboda. SECOND GRADE (top right photo) front: Tucker Greve, Todd McQuistan and Kassi Anderson; back: Christopher Henschke, Tim McQuistan, Roger Westerhold and Andy Meyer. THIRD & FOURTH GRADES (photo at right) front: Brandon Kai and Jonathan Morse; back: Kala Henschke, Melissa Hansen, Andrea Greve and Michelle McQuistan; absent: Apryl Webster.



The State National Bank and Trust Company

Wayne, NE 68787 • 402/375-1130 • Member FDIC
 Main Bank 116 West 1st • Drive-In Bank 10th & Main

(continued from page 1A) sides of all the issues. He said by the time people cast their ballot Nov. 6, they had a good understanding of the issues.

"What we did was to make a philosophical plan which can be adjusted, if necessary, in the future," he said. "By the vote, the public has said they don't want property taxes to go up and they want the state to have a bigger role in how the money is distributed to the schools districts."

Drawing—

(continued from page 1A)

Wayne, who won \$6 from Taco Stop; Tom Anderson, Winside, who won \$15 from El Toro; Wanda Novak, Allen, who won \$9 from The Morning Shopper; Lora Young, Wayne, who won \$15 from Pac 'N' Save.

Angie Denesia, Wayne, who won \$6 from PoPo's II, Joanne Rahn, Allen, who won \$5 from Pamida; Gail Gray, Wayne, who won \$46 from Heikes Auto Service.

Mardelle Brudigan, Wayne, who won \$50 from Northeast Nebraska Insurance; and Darlene Topp, Wayne, who won \$18 from Griess Rexall.

Christmas Tour of Homes

The Wayne Rotary Club will be sponsoring a Christmas tour of homes on Sunday, December 9 from 2 to 4 p.m. Refreshments will be served from 1:30 to 4:30 p.m. in the Wayne VFW Club.

This year's featured homes include the residences of Marion and Pat Arneson, Donald and Julie Mash, John and Anita Fuelberth, and Ralph and Ann Barclay.

The homes will be decorated by the Wayne Greenhouse, the Wayne State College Interior Design Club, Nebraska Floral and Gift, and Pucket Florist of Pender, Neb.

The Rotary Club will donate proceeds from the event to local organizations.

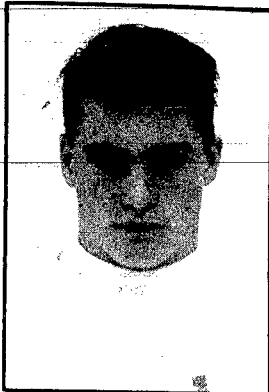
Tickets are available at First National and State National Banks, Pac 'N' Save, Sav-Mor Pharmacy, the VFW, and in each home and the VFW Club on the day of the tour. Tickets may also be purchased through local Rotary members or call Mrs. Ahmann at 375-3163.



Cory Wieseler
Senior-Wayne
First Team All Area



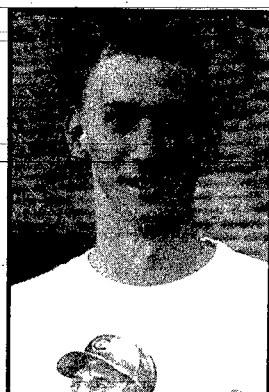
Dan Wiseman
Senior-Wayne
First Team All Area



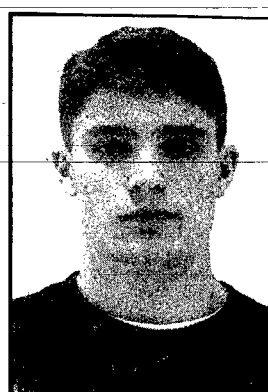
Rusty Hamer
Senior-Wayne
First Team All Area



Jason Ehrhardt
Senior-Wayne
First Team All Area



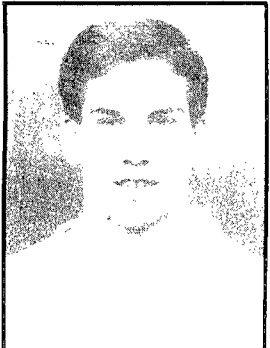
Regg Carnes
Sophomore-Wayne
First Team All Area



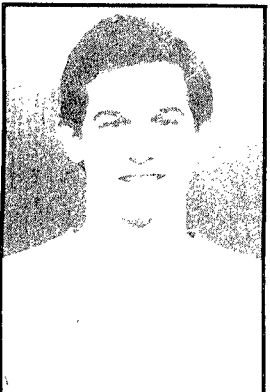
Chris Fredrickson
Senior-Wayne
First Team All Area



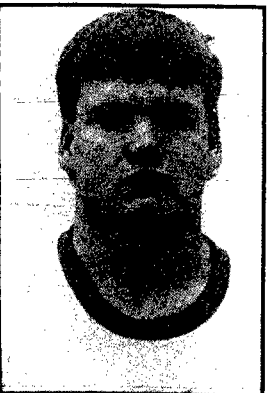
Matt Bruggeman
Senior-Wayne
First Team All Area



Shane Dahl
Senior-Allen
First Team All Area



Kevin Crossgrove
Junior-Allen
First Team All Area



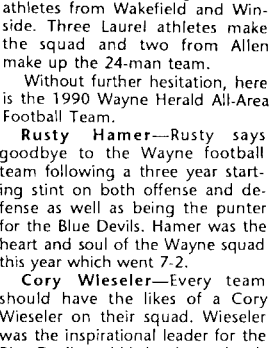
Trevor Topp
Junior-Winside
First Team All Area



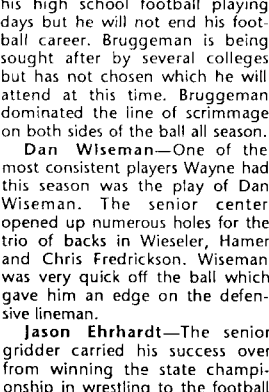
Kyle Torczon
Senior-Wakefield
First Team All Area



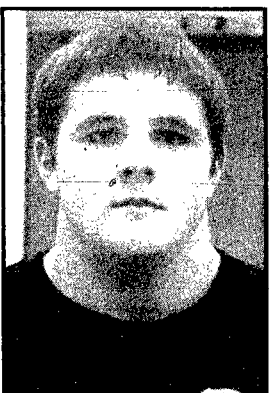
Brian Thompson
Senior-Winside
First Team All Area



Mark Brugger
Senior-Winside
First Team All Area



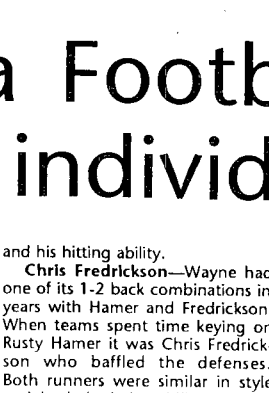
Jeff Gallop
Senior-Winside
First Team All Area



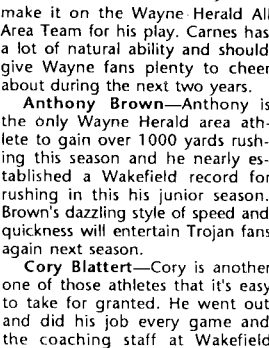
Cory Jensen
Junior-Winside
First Team All Area



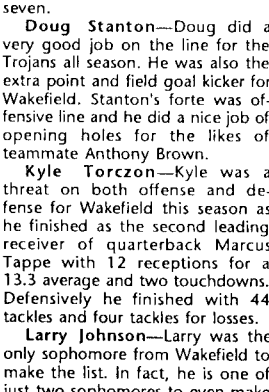
Jason Krueger
Junior-Winside
First Team All Area



Rusty Reifenrath
Senior-Laurel
First Team All Area



Pat Arens
Senior-Laurel
First Team All Area



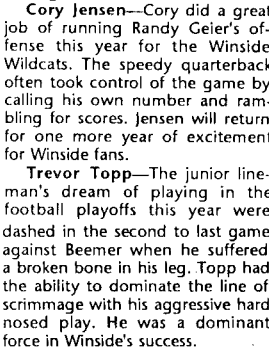
Brian Penne
Senior-Laurel
First Team All Area



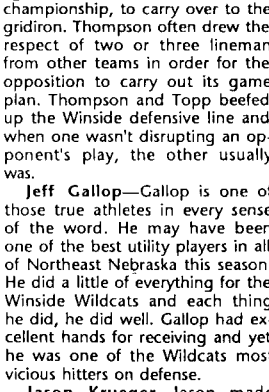
Matt Bartling
Senior-Wakefield
First Team All Area



Doug Stanton
Senior-Wakefield
First Team All Area



Cory Blattert
Senior-Wakefield
First Team All Area



Anthony Brown
Junior-Wakefield
First Team All Area



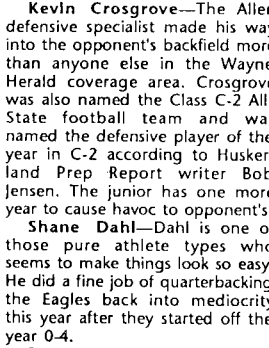
Jason Krueger
Junior-Winside
First Team All Area



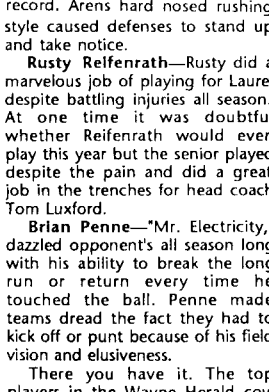
Matt Bartling
Senior-Wakefield
First Team All Area



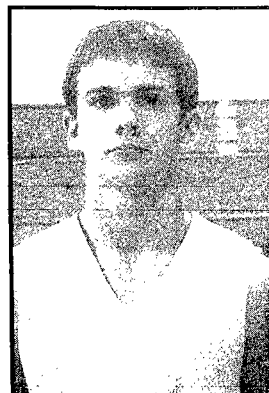
Cory Blattert
Senior-Wakefield
First Team All Area



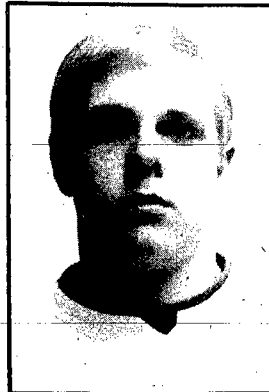
Matt Bartling
Senior-Wakefield
First Team All Area



Matt Bartling
Senior-Wakefield
First Team All Area



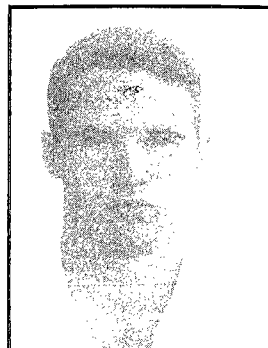
Matt Bartling
Senior-Wakefield
First Team All Area



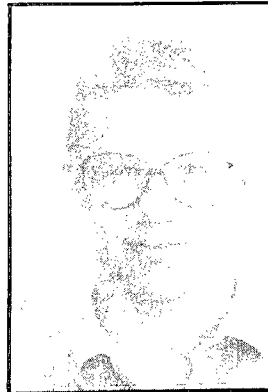
Matt Bartling
Senior-Wakefield
First Team All Area



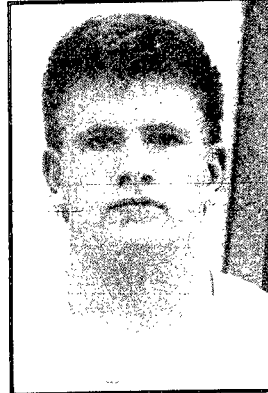
Matt Bartling
Senior-Wakefield
First Team All Area



Matt Bartling
Senior-Wakefield
First Team All Area



Matt Bartling
Senior-Wakefield
First Team All Area



Matt Bartling
Senior-Wakefield
First Team All Area



Matt Bartling
Senior-Wakefield
First Team All Area

All-Area Football Team lists top 24 individuals this year

By Kevin Peterson
Sports Editor

The Annual Wayne Herald All-Area Football Team is released today by the Wayne Herald sports staff. These athletes were picked for their performance based on the views of the Wayne Herald only. Coaches had no impact on the selections.

Seven Wayne-Carroll athletes make the squad along with six athletes from Wakefield and Winside. Three Laurel athletes make the squad and two from Allen make up the 24-man team.

Without further hesitation, here is the 1990 Wayne Herald All-Area Football Team.

Rusty Hamer—Rusty says goodbye to the Wayne football team following a three year starting stint on both offense and defense as well as being the punter for the Blue Devils. Hamer was the heart and soul of the Wayne squad this year which went 7-2.

Cory Wieseler—Every team should have the likes of a Cory Wieseler on their squad. Wieseler was the inspirational leader for the Blue Devils and his hard nosed style of play rubbed off on many of the younger players.

Matt Bruggeman—Matt ends his high school football playing days but he will not end his football career. Bruggeman is being sought after by several colleges but has not chosen which he will attend at this time. Bruggeman dominated the line of scrimmage on both sides of the ball all season.

Dan Wiseman—One of the most consistent players Wayne had this season was the play of Dan Wiseman. The senior center opened up numerous holes for the trio of backs in Wieseler, Hamer and Chris Fredrickson. Wiseman was very quick off the ball which gave him an edge on the defensive lineman.

Jason Ehrhardt—The senior griddler carried his success over from winning the state championship in wrestling to the football field. Ehrhardt is one of those guys who belongs in a football uniform because of his savvy for the game

and his hitting ability.

Chris Fredrickson—Wayne had one of its 1-2 back combinations in years with Hamer and Fredrickson. When teams spent time keying on Rusty Hamer it was Chris Fredrickson who baffled the defenses. Both runners were similar in style and both had the ability to keep running once they were hit.

Regg Carnes—Regg is the only underclassman from Wayne to make it on the Wayne Herald All Area Team for his play. Carnes has a lot of natural ability and should give Wayne fans plenty to cheer about during the next two years.

Anthony Brown—Anthony is the only Wayne Herald area athlete to gain over 1000 yards rushing this season and he nearly established a Wakefield record for rushing in this his junior season. Brown's dazzling style of speed and quickness will entertain Trojan fans again next season.

Cory Blattert—Cory is another one of those athletes that it's easy to take for granted. He went out and did his job every game and the coaching staff at Wakefield didn't have to worry about him missing assignments. Blattert was the second leading tackler for Wakefield on tackles for losses with seven.

Doug Stanton—Doug did a very good job on the line for the Trojans all season. He was also the extra point and field goal kicker for Wakefield. Stanton's forte was offensive line and he did a nice job of opening holes for the likes of teammate Anthony Brown.

Kyle Torczon—Kyle was a threat on both offense and defense for Wakefield this season as he finished as the second leading receiver of quarterback Marcus Tappe with 12 receptions for a 13.3 average and two touchdowns. Defensively he finished with 44 tackles and four tackles for losses.

Larry Johnson—Larry was the only sophomore from Wakefield to make the list. In fact, he is one of just two sophomores to even make the all area squad. Johnson rushed for over 200 yards this year and averaged nearly six yards a crack.

He also finished as the second leading tackler with 114. Anthony Brown also led the defense with 125 tackles.

Matt Bartling—Matt closed out his career with the Wakefield Trojans in fine fashion. The senior played on both sides of the ball as a fullback on offense where he averaged 3.5 yards a rush. Defensively, he was in on 37 tackles including four for losses.

Cory Jensen—Cory did a great job of running Randy Geier's offense this year for the Winside Wildcats. The speedy quarterback often took control of the game by calling his own number and rambling for scores. Jensen will return for one more year of excitement for Winside fans.

Trevor Topp—The junior lineman's dream of playing in the football playoffs this year were dashed in the second to last game against Beemer when he suffered a broken bone in his leg. Topp had the ability to dominate the line of scrimmage with his aggressive hard nosed play. He was a dominant force in Winside's success.

Brian Thompson—Thompson is another athlete who allowed his success on the wrestling mat a year ago—which resulted in a state championship, to carry over to the gridiron. Thompson often drew the respect of two or three linemen from other teams in order for the opposition to carry out its game plan. Thompson and Topp beefed up the Winside defensive line and when one wasn't disrupting an opponent's play, the other usually was.

Jeff Gallop—Gallop is one of those true athletes in every sense of the word. He may have been one of the best utility players in all of Northeast Nebraska this season. He did a little of everything for the Winside Wildcats and each thing he did, he did well. Gallop had excellent hands for receiving and yet he was one of the Wildcats most vicious hitters on defense.

Jason Krueger—Jason made the switch to running back this season and he made the most of his new found position. The good

sized fullback did a nice job of breaking the trap play to offset opponent's from keying on the Winside I-backs and quarterback Cory Jensen.

Mark Brugger—Brugger is another one of those athletes who goes out quietly every game and does his job in the trenches. The senior center opened up holes all year long for the Winside backfield.

Kevin Crossgrove—The Allen defensive specialist made his way into the opponent's backfield more than anyone else in the Wayne Herald coverage area. Crossgrove was also named the Class C-2 All-State football team and was named the defensive player of the year in C-2 according to Huskerland Prep Report writer Bob Jensen. The junior has one more year to cause havoc to opponent's.

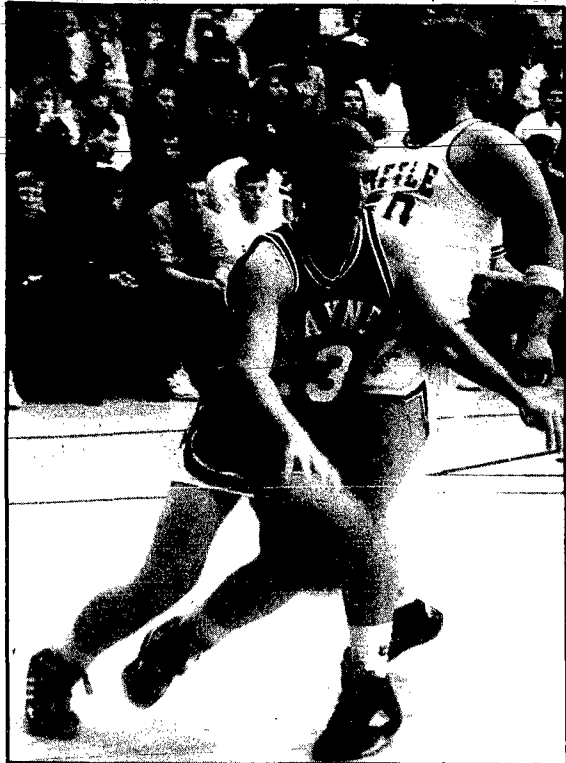
Shane Dahl—Dahl is one of those pure athlete types who seems to make things look so easy. He did a fine job of quarterbacking the Eagles back into mediocrity this year after they started off the year 0-4.

Pat Arens—The senior running back led the Laurel Bears in rushing this season and enjoyed a fine season despite the Bears 3-6 record. Arens hard nosed rushing style caused defenses to stand up and take notice.

Rusty Reifenrath—Rusty did a marvelous job of playing for Laurel despite battling injuries all season. At one time it was doubtful whether Reifenrath would even play this year but the senior played despite the pain and did a great job in the trenches for head coach Tom Luxford.

Brian Penne—"Mr. Electricity," dazzled opponent's all season long with his ability to break the long run or return every time he touched the ball. Penne made teams dread the fact they had to kick off or punt because of his field vision and elusiveness.

There you have it. The top players in the Wayne Herald coverage area in football for 1990. The five area teams had a combined record of 26-19.



Five Blue Devils score in double figures

Wayne boys down Battle Creek in high scoring tilt

By Kevin Peterson
Sports Editor

The Wayne Blue Devils overcame a 57-46 Battle Creek advantage early in the third quarter of Friday night's opening game of the season for both teams, to go on and win by an 88-81 margin.

Wayne out scored the host Battle Creek team 42-24 after that 11 point deficit stared them in the face and the catalyst for the Blue Devils was senior guard Jeff Griesch.

Griesch scored 19 second half points and finished with 26 total points to lead all scorers and propel Wayne to a 1-0 start on the new season. "Jeff is a heck of a leader," Wayne coach Bob Uhing said. "He leads by example and his

experience played a key role for us down the stretch. He handled the ball well and knew what to do with it when he had to make something happen."

Another key to the Blue Devil victory was the play of sophomore Regg Carnes in the second half. Carnes finished the game with 12 points but 10 of those points came in the fourth quarter where he hit some crucial free throws to ice the game for Wayne.

"I was really pleased with the effort our kids gave," Uhing said. "They never gave up and showed good poise and executed the ball on offense real well in the second half, especially in the fourth quarter."

One other factor that Uhing felt was a key to Wayne's win was the

fact that he played 10 players and all 10 contributed in a positive way. Five Wayne players finished the contest in double figures led by Griesch with 26. Craig Sharpe finished with 20 points after scoring 14 in the first half.

Brian Lentz drilled three 3-point field goals enroute to a 16 point game while Carnes netted 12 and Kyle Dahl, 10. Aaron Wilson and Bobby Barnes each scored two to round out the scoring attack.

Battle Creek drilled 11 3-point field goals in the game while Wayne had five with Lentz's three and Griesch's two. The Blue Devils were phenomenal from the charity stripe hitting 19 of 22 attempts while Battle Creek was 16-29.

Wayne dominated the boards to the tune of 33-19 as Regg

Carnes led the way with 10. Griesch hauled down seven boards and Kyle Dahl had six. The Blue Devils had 20 turnovers compared to 16 for Battle Creek.

One of the things Uhing attributed the win to was the change of the press Wayne put on Battle Creek which resulted in some quick turnovers and easy baskets. Regg Carnes also did a fine job of rebounding his own missed shots on several occasions which gave Wayne second chance points.

In the preliminary game before the varsity contest the Wayne reserve team defeated Battle Creek by a 52-49 margin as Wayne was led by Matt Ley and Ted Perry with 13 and 12 points each.

Blue Devils win home opening dual

Wayne grapplers win easily

The Wayne wrestling team picked up right where it left off last season Thursday night as they drilled Schuyler in dual action 60-6 in the Wayne High gymnasium.

The Blue Devils went undefeated in dual action last season and are boasting a squad this year that could do even better on the season as a whole than last year.

"It was a good opening meet for us," Wayne wrestling coach John Murtaugh said. "I could tell that the kids were anxious to get the season started and they were ready to wrestle."

Wayne had every weight division filled which is not unusual for the Blue Devils while Schuyler had to forfeit their 189 lb. and heavy-weight matches to Jason Ehrhardt and Matt Bruggeman because they had no one to fill those vacancies—thus defending state champ Jason Ehrhardt had to wait until Saturday to get his first action of the 1990-91 season.

"Of all the wins we got Thursday night I was especially pleased with the performance of Todd Fredrickson who got us a pin in his first varsity match," Murtaugh said.

The following is a composite of how each Wayne wrestler fared in their opening dual of the season.

103—Todd Fredrickson, Won by Pin over Chad Christensen in 2:48.

112—Randy Johnson, Lost by Decision to Justin Schemper, 10-8.

119—Brent Gamble, Won by Pin over Jeremy Stutzman in 3:24.

125—Eric Cole, Lost by Decision to Dusty Stutzman, 10-4.

130—Trevor Wehrer, Won by Decision over Jason Lane, 6-3.

135—Mike DeNaeyer, Won by Pin over Chico Lozos in 2:46.

140—Jason Fink, Won by Pin over Bryan Parry in 2:44.

145—Chris Janke, Won by Decision over Keith Christensen.

152—Jesse Brodersen, Won by Pin over Barry Vanek in 3:25.

160—Cory Wleseler, Won by

Pin over Eric Cerny in 3:06.

171—Dwayne Junck, Won by Pin over Chad Steffan in 2:59.

189—Jason Ehrhardt, Won by Forfeit.

HWT—Matt Bruggeman, Won by Forfeit.

There were no junior varsity matches before the varsity match.

Winside falls short

The Winside Wildcats boys basketball team dropped their second game in as many outings in Winside Friday night against Homer by a 55-46 margin. Head coach Randy Geier said his team had chances to win the game but couldn't quite get the job done.

"It was a tight game all the way," Geier said. "With just 1:30 left in the game it was a four point contest but we had to start fouling and Homer did a nice job of converting the free throws."

Winside led 12-7 after the first quarter of play despite getting into foul trouble with their three senior starters in Mark Brugger, Tad Behmer and Matt Brogren.

Homer outscored Winside by one in the second quarter to trail the host Wildcats by a 27-23 margin at the intermission. By the third quarters end however, Homer had edged out in front by a 39-38 score.

Winside was outscored 16-8 in the fourth and final quarter. Matt Brogren led the Wildcat attack with 14 points while Cory Jensen scored 13. John Hancock was also in double figures with 10 points. Tad Behmer finished the game with four points while Cory Miller and Jason Paulsen rounded out the attack with three and two points respectively.

The bright spot for Winside was their free throw shooting where they were 10 of 13. Homer was 16 of 21. Winside was out rebounded by a 44-37 margin.

JEFF GRIESCH DRIVES baseline on Battle Creek during Wayne's 88-81 victory on Friday night. Griesch led all scorers with 26 points.



Erin Pick
Sophomore-Wayne
Second Team Selection

In the November 29th issue of the Wayne Herald, the All-Area Volleyball Team lists Erin Pick as a member of the second team but in the write up it has Kari Lutt's name and comments.

Erin Pick was one of Wayne's top two spikers this season as a sophomore for Marlene Uhing. She did a fine job of blocking as well from her front row position. Erin will be one of the key figures in the next two Wayne volleyball campaigns and with her valuable experience on the varsity level for two years already, it will make her an even better player.

Laurel girls upset Coleridge by six

The Laurel Lady Bears made a statement Thursday night in their home opener of the basketball season as they upset the highly touted Coleridge Bulldogs by a 53-47 margin.

That message is when you come to play in Laurel, be ready to battle. Second year coach Mike Zimmerman watched his squad get down quickly 12-2 when the game started but his Bears responded by outscoring the Bulldogs 14-4 the rest of the quarter to tie the game at 16 heading to the second period.

Laurel continued to shoot well from the field in the second quarter and by intermission the Bears had a five point lead. Things continued to go well in the third quarter as they built a nine point lead heading into the final quarter at 45-36.

"We run an up tempo style of offense," Zimmerman said. "We got tired but I think Coleridge was more tired and it worked to our advantage as we got their big girl Steph Hansen to get into foul trouble."

There were a lot of turnovers in the game, but Zimmerman said that is going to happen when you get into an up tempo style of play. "I was very happy to see the end result," Zimmerman said. "This team beat us by 15 last year and they are all the same girls with the exception of one."

Stacy Nixon led the Bears attack with 21 points while Sherri Hangman chipped in 16. Betsy Adkins was next in line with seven. Nixon was also the leading rebounder with nine caroms to her credit in a contest that saw a much shorter Laurel team out rebound Coleridge.

Boys win by six while girls lose by 12

Wakefield teams split with Pender

The Wakefield girls and boys basketball teams traveled to Pender Thursday night to begin the 1990-91 basketball campaign for the Trojans. The girls came in with new head coach Gregg Cruickshank with hopes of upsetting the host Lady Dragons but Pender won the game 56-44.

The Lady Trojans held a slim 12-11 lead after the first quarter and with five minutes left until the intermission they still maintained that one point lead. But Pender's press caused some turnovers and they went on an 8-0 run and led at halftime 29-22.

In the third quarter Wakefield succumbed to yet another 8-0 run by the host team and fell behind by 17 heading to the final eight minutes of play, 47-30. The Trojans used an 8-0 run of their own to open up the final stanza of play and had the lead cut to nine with plenty of time remaining but could draw no closer.

"We had four consecutive possessions with Pender leading by nine points and we just couldn't

convert those possessions into points," Cruickshank said. "We missed two lay ups in those four possessions."

Cruickshank said his Trojans did a nice job of running their half court offense early on in the contest but Pender's press caused some turnovers and led to those two runs of eight points.

"We just had those two lapses otherwise we handled their pressure pretty well," Cruickshank said. Wakefield was led in scoring by Lisa Blecke who finished the game with 26. Lisa Anderson and Wendy Kratke followed with six apiece while Sarah Salmon and Heidi Muller rounded out the attack with four and two points respectively.

Boys win by six

The Wakefield boys brought basically a brand new team into the Pender gymnasium Thursday night after losing six seniors off of last season's state semi-final squad.

Still, Paul Eaton's troops rallied behind their defense to walk away with a 45-39 victory. "I was really pleased with our defense," Eaton said. "We didn't execute

offensively very well but we also had two of our starters in foul trouble a lot in Anthony Brown and Matt Krusemark."

The Trojans defense enabled them to get off to a fast start as they led 15-2 after one quarter of play. By intermission Pender was only able to trim one point off that lead at 25-13.

Wakefield's defense kept up their pressure throughout the third quarter and they were able to increase their lead to 35-21 with eight minutes remaining. Pender tried to rally in the final stanza by outscoring the Trojans 18-10 but Wakefield escaped with a six point win.

Anthony Brown led the Wakefield attack with 16 points while Marcus Tappe added nine. Keith Wenstrand finished with eight points and Brent Oetken netted five. Doug Stanton scored three points while Rod Greve and Matt Krusemark scored two each.

Wenstrand was the top rebounder for Wakefield with seven caroms to his credit while Oetken pulled down six. Krusemark and Brown each recorded five rebounds. "We will be pretty competitive all season," Eaton said. "But one thing we really have to cut down on is turnovers. We had 25 in the first game and that is way too many."

COUNTRY LIVING

3 bdrm ranch, main-floor laundry, C/A. 2-car garage on 1/2 acre in friendly neighborhood featuring country living with city flavor...\$45,500

MIDWEST Land Co.

206 Main - Wayne, Nebraska 375-3385

♪♪♪♪♪♪♪♪♪♪♪♪♪♪♪♪

Your Christmas Music Stations

KTCN 1590 AM 105 FM

THE WAYNE HERALD AND MARKETER

114 Main Street Wayne, NE 68787 375-2600
PUBLICATION NUMBER USPS 670-560

PRIZE WINNING NEWSPAPER
1990 Newspaper Press Ass.

National Newspaper Association
Sustaining Member 1990

Serving Northeast Nebraska's Greatest Farming Area

Publisher - Gary Wright
Comptroller - Peggy Wright
Mng. Editor - Mark Crist
Asst. Editor - LaVon Anderson
Sports Editor - Kevin Peterson
Ad Executive - Jan Bartholomaus
Receptionist - Jennifer Cole
Bookkeeper - Linda Granfield
Typesetters
Alyce Henschke & Shelley Kirk
Composition Foreman - Judi Topp
Press Foreman - Al Pippitt
Darkroom Technician - Jeff Sperry
Cartoonist - Chad Crouch
Columnist - Pat Meierhenry
Commercial Printers
Charles Kudlack & Marilyn Gehner
Mailroom Manager - Doris Clausen
Mailroom Asst. - Cyndee & Les Lage
Press Room Asst. - Kevin Baldrige
Gen. Asst. - Tabitha Moore & Dale Kruze
Maintenance - Mike Smith
Special Project Asst. - Lois Green, Glenda Schluns & Joni Holdorf

Established in 1875; a newspaper published semi-weekly, Monday and Thursday (except holidays). Entered in the post office and 2nd class postage paid at Wayne, Nebraska 68787. Also publisher of The Marketer, a total market coverage publication.

POSTMASTER: Send address change to The Wayne Herald, P.O. Box 70, Wayne, Nebraska, 68787.

Official Newspaper of the City of Wayne, County of Wayne and State of Nebraska

SUBSCRIPTION RATES
In Wayne, Pierce, Cedar, Dixon, Thurston, Cuming, Stanton and Madison Counties; \$25.00 per year \$20.00 for six months. In-state: \$28.00 per year, \$22.50 for six months. Out-state: \$34.00 per year, \$27.50 for six months. Single copies 45 cents.

Shane Dahl and Jody Martinson combine for 42 to lead Eagles Winside girls down Allen in OT; Allen boys win big

By Kevin Peterson
Sports Editor

The Winside girls and boys basketball teams opened up 1990-91 play Thursday night by hosting the Allen Eagles. In the girls contest it seemed only fitting that these two teams start off the season against each other since both missed a week of preseason practice due to qualifying for the state volleyball tournament.

At any rate, it turned out to be a fine ball game as the Wildcats prevailed 49-47 in overtime. Holly Holdorf hit the second of two free throws with less than 20 seconds remaining in regulation to send the game into overtime where the Wildcats outscored the Eagles 6-4 for the win.

Winside jumped out to a 16-11 lead after the first quarter and early on it looked as if it was going to be the battle between the two centers as Winside's Wendy Rabe and Allen's Sonya Plueger each scored the first two buckets of the game for their respective teams. Rabe went on to score 10 first quarter points for the Wildcats.

Winside increased its lead to eight at intermission at 27-19 but the Eagles came out running in the third quarter as they outscored Winside 12-6 in the third quarter to draw the game to two at 33-31.

In the fourth quarter Allen actually took a four point lead before Winside battled back to tie the game. "For as little time as we've practiced I really wasn't disappointed in the way we played," Winside coach Paul Giesselmann said. "We did a good job of hus-

ting all the way through the game despite playing just six girls."

Allen coach Lori Koester was also pleased with her girls' play despite the loss. "I was real happy with our performance," Koester said. "We know where we stand now and we know how good of a team Winside is so we are pleased right now."

One thing Giesselmann feels his team will really have to work on is free throw shooting as they hit just five of 19 attempts. "We were just 2-9 from the line in the fourth quarter," Giesselmann said. "And three were the front end of one-and-ones."

Allen hit five of eight from the free throw line. Winside held a 48-43 edge in rebounding and the Wildcats suffered 16 turnovers in the game compared to just 12 by Allen.

Winside was led in scoring by Wendy Rabe who finished with 17 points. Jenny Jacobsen followed with 13 and Kelly Pichler had eight. Holly Holdorf finished with five and Christi Mundil netted four. Kari Pichler finished with two points.

Allen was led by Robin Schroeder who poured in a dozen points while Sonya Plueger scored 11. Denise Boyle finished with nine points and Heather Sachau added seven. Cindy Chase and Carla Stapleton each scored four points.

The Wildcats were led in rebounding by Rabe as the junior hauled down 16 rebounds. She also blocked five shots. Jacobsen had 11 rebounds for the Wildcats and Holdorf pulled down six.

Denise Boyle led Allen in rebounding with nine caroms to her credit while Plueger and Sachau had six rebounds apiece.

Eagles boys win by 19
The Allen boys basketball team began a new era Thursday night under first year coach Jeff Schoning and the Eagles didn't make Schoning wait long for his first victory as they pressed the Winside Wildcats into a 79-60 defeat.

Allen came out pressing and their quickness enabled them to jump out to a quick 8-0 lead before Winside could score. By the quarters end the Eagles led 24-13.

In the second quarter Allen mounted a lead of 18 points but the Wildcats started chipping away and by intermission the lead had shrunk to six at 35-29. At the start of the third quarter Winside chipped one more point off the lead before the roof caved in.

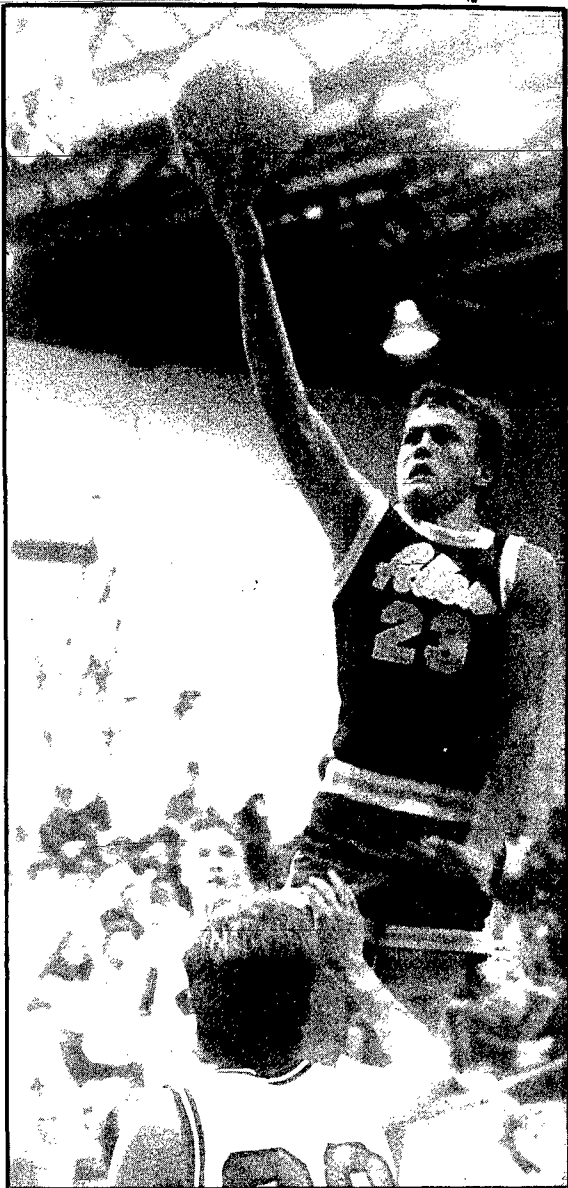
Allen went on a run again and outscored the Wildcats 24-8 the rest of the third quarter for a 59-38 cushion heading into the final stanza of play. "I was pleased with our performance for the first game," Schoning said. "We still have some work to do especially on the boards but our quickness was the difference against Winside."

Everyone contributed to the Eagle victory but the senior combination of Shane Dahl and Jody Martinson scored 42 points with Dahl netting 24 to lead the Eagle attack. Curtis Oswald scored eight points for Allen while Brian Anderson, Chris Sachau and Jason Reuter all had six apiece. Kevin Crossgrove netted five points while Shane Fiscus, Paul Brentlinger and Barry Greenough scored two each as 10 Allen players scored.

Winside was led by Mark Brugger's 21 points. Cory Jensen added 13 for the Wildcats while Tad Behmer scored eight. John Hancock netted seven points and Matt Brogren added five. Jason Paulsen and Cory Miller rounded out the attack with four and two points each.

Winside suffered 18 turnovers in the contest while Allen committed just 11. The Wildcats held a slim edge in rebounds at 45-43 as Brugger hauled down 11 to lead the way. Jensen, Behmer and Brogren all hauled down seven rebounds apiece.

"I felt the major difference in the game was Allen's quickness," Winside coach Randy Geier said. "We need to do a much better job of executing our offense."



ALLEN'S JODY MARTINSON puts up a finger tip lay up during Allen's 79-60 win over Winside Thursday night.

Photography: Kevin Peterson

WSC loses by 42

The Wayne State Wildcats saw their season record slip to the .500 mark following Wednesday night's blowout by Morningside, 104-62. The loss put the Wildcats at 2-2 on the season.

Wayne State led 2-0 on a lay-up by Michael Parks but Morningside came back and scored the next nine points before Ricky Watson made a free throw to make it a 9-3 game with 16:47 remaining in the first half.

It would be five and a half minutes later before the Wildcats would score their next point—a Gerard Ras field goal which made it a 23-5 ball game. WSC never got closer than 17 points the rest of the game as Morningside improved to 3-1 on the season.

Seven Morningside players finished the game in double figures led by Jason Huff's 16 points. Chris Kuhlmann had 14 while Terrance Green finished with 13 as did Jason Siemen. Dave Vaandrager, Chad Mercer and Jeff Birchard all finished with 10 points apiece.

The Wildcats were led by O'Neill freshman Chad West who scored 16 points. West drained four of the five three point field goal attempts he tried. Michael Parks was the only other Wildcat in double figures with 11. Todd Dusenberry finished with eight points while Ricky Watson netted seven. Davy Summers scored six points for the Wildcats while Eric Priebe and Gerard Ras each had five. Gerry Sagehorn rounded out the attack with four points.

Morningside dominated the boards to the tune of 44-33. Casey Gates was WSC's top rebounder with seven caroms to his credit. Gerard Ras pulled down six. WSC had just one steal in the game and that was by Davy Summers while Morningside stole the ball from the Wildcats seven times.

The host Chiefs dished out 29 assists as a team while the Wildcats had just nine. Summers had three while Dusenberry dished out a pair of assists. The Wildcats turned the ball over 19 times while Morningside had just 13.

Junior High grapplers in action

WAYNE-The Wayne Junior High wrestlers took part in a double dual in Winside recently with the Wildcats and Stanton. No team score was kept but the following is how the Wayne wrestlers fared.

Joshua Sanderfer pinned Stanton's Andy Hendrix and he pinned Winside's Jason Jensen. Travis Koester pinned Stanton's Steve Shellpeper and won by decision over Winside's Jason Wylie.

Ryan Brown lost by decision to Stanton's Travis Scott and lost by pin to Winside's Scott Jacobs. Cory Erxleben lost by decision to Stanton's Pat Schellpeper and won by pin over Winside's Josh Jaeger.

Andy Rise won by pin over Stanton's Travis Kollath and lost by decision to Winside's Scott Jacobsen. Chris Headley lost by pin to Stanton's Seth Poehman and won by pin over Winside's Jay Shelton.

Ryan Wheeler lost by pin to Stanton's Andy Hendrix and lost by pin to Jay Shelton of Winside. Dusty Jensen lost by decision to Stanton's Matt Bixemmann and won by decision over Winside's Lonnie Goothe.

Brent Geiger lost by decision to Stanton's Jon Dolliver and lost by pin to Winside's Jay Shelton. Jason Starzl won by decision over Winside's Colby Jensen while Andy Metz won by pin over Winside's Jason Jensen. Jeff Hamer won by pin over Winside's Dave Paulsen.

Break-a-Record night Tuesday

WAYNE-Tuesday night's game between the Wayne State women Wildcats versus Midland Lutheran will be Break-a-Record night for attendance. It will be the third annual event which attempts to break the state college attendance record for a women's basketball game.

Those who received a Women-Helping-Women T-Shirt for walking in the walk-a-thon may wear the shirt and get into the game at no cost.

Husker football contest results listed

WAYNE-The eleven winners of the Husker Football contest which was sponsored this fall by the Wayne Lions Club as a fund raiser were Dick Carmichael, Bill Woehler, Ray Butts, Earl Norman, Ric Wilson, Jerry Zimmer, Ken Halsey, Keith Zimmer, Jerry Zimmer, Dale Stoltenberg, and Dean Jensen of Winside.

Wrestling Club meeting

WAYNE-There will be a wrestling club meeting on Monday night at 8 p.m. in room 101 of the high school according to wrestling coach John Murtaugh.

Eighth grade downs Pender

WAYNE-The Eighth grade boys basketball team defeated Pender by a 30-27 margin Thursday afternoon in Pender. Wayne was led by Jason Carr and Joey Lutt as each scored nine points. Ryan Pick added seven. The leading rebounder for the junior Blue Devils was Ryan Martin with seven.



JENNY JACOBSEN SKIES for a rebound during Winside's overtime victory over the Lady Eagles of Allen Thursday night in Winside.

Photography: Kevin Peterson

COMING SATURDAY
DECEMBER 15
FIRST EVER
**CHRISTMAS
AUCTION**
ON
ATOH 1590 AM
105 FM
TUNE IN FOR DETAILS

**TREASURY
RATE CD**

12-Month CD
7.55%

December Rate
Your rate will change monthly based on Treasury Index.

- \$5,000 minimum investment
- \$1,000 addition option
- Interest payment options available

Interest penalty for early withdrawal.

Accounts insured to \$100,000 by the FDIC.

FIRST FEDERAL LINCOLN

Personality Profile

Beverly A. Etter
 Vice-President and
 Secretary to the Board
 State National Bank
 and Trust Company

Family: Husband, Ralph D. Etter; Sons: John David, 22, a certified welder for Sidney and Lowe Railroad in Sidney, Neb.; Thomas Matthew, 20, a sophomore at Kansas State University, Manhattan, Kan.; Parents, Albert N. and Edna Mae Anderson.

What aspects of your job do you enjoy the most: My customers and people with whom I associate throughout the day at the bank.

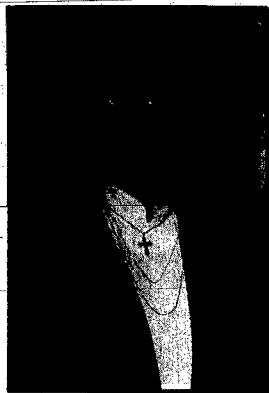
What job or occupation are you sure you would not like? Why: A seamstress — I don't even like to sew on a button.

What recently made you laugh out loud: I have an early morning customer who really gets my day started "right" and by "right" I mean we usually have a good laugh together.

What would you like to accomplish if you were president of the United States: Peace among all nations.

What's your favorite hobby? Why: I really don't have any hobbies. I enjoy spectator sports and I enjoy traveling. Also, I like cats and they give me much enjoyment.

What is the most unusual or daring activity you would try ... if you had the courage or nerve: I always wanted to learn to fly an



airplane. I think it is safer than driving a car and, like driving a car, I would like to be in control of the plane.

Briefly explain your ideal vacation: A place where the weather is about 85 degrees, no wind, no telephones, meals prepared and served, no time schedules to keep and plenty of rest and relaxation. Now, where do I go?

What do you remember most about being 10-years-old: Going to country school and being in the Christmas program. I had lots of lines to learn.

How would your friends describe you to strangers: I hope they would describe me as a compassionate, friendly person who enjoys people and animals and enjoys serving the Lord.

LENRD board sets big plans for creek

The Lower Elkhorn Natural Resources District Board of Directors approved funds for the construction of a new jetty and additional boat ramp at Willow Creek State Recreation Area at its November meeting.

Water levels at Willow Creek Reservoir near Pierce are approximately eight feet low, so the directors want to take advantage of the situation.

With the lake relatively low, access for fishermen is very limited, according to Park Superintendent Dan Sutherland. Besides creating more valuable access, Sutherland says, "A jetty constructed of rock would also serve as an excellent area for fish production and needed habitat."

The proposed boat ramp would be west of the beach area. "The lake's southwest ramp, through siltation and past water fluctuations, has been almost unusable for the past three years," says Sutherland. "The proposed ramp, due to its location and topography, would give the access the area deserves," he adds.

A bid of \$97,989 from Sargent Irrigation from Broken Bow was accepted by the board for the construction of the water supply well, chlorination building and control system for the Logan East Rural Water System. Phase I of the \$5.7 million project will provide quality water to approximately 110 users in Burt County. Bids for the elevated tank and the water distribution system were accepted during the October board meeting. Construction of the rural water system should begin this winter, depending on weather conditions.

In other board action • the contract term for wildlife food plots on Conservation Reserve Program (CRP) acres will be extended to coincide with the length of the CRP contract rather than the original three year term. • Lands for Conservation payments will be increased from \$30 per acre to \$40 per acre for calendar year 1991. The Lands for Conservation Program encourages land treatment construction during the summer months.



'Fantasy Forest' held

MEMBERS OF THE WAYNE HIGH SCHOOL girls vocal group sing their renditions to several Christmas songs during Thursday night's lighting of the trees for 'Fantasy Forest 1990'. (Below) Alvena Wilson decorates the Goldenrod Hills tree with pine cones, which represent children who will benefit from donations to the Toys for Tots program this year. The 'Fantasy Forest' program continued through Sunday.



'Messiah' being performed Wacker in choral group

WINSIDE - Darren Wacker of Winside is one of 120 students participating in the Buena Vista College Christmas choir concert on Sunday, Dec. 9 at 7:30 p.m. in Schaller Memorial Chapel on campus.

Stanley G. Rishoi, associate professor of music, will present George Frederick Handel's "The Messiah."

Wacker, a sophomore mass communication major at Buena Vista, is the son of Robert and Lynn Wacker of Winside.

The choir, under the direction of

Obituaries

Jessie Rieth

Jessie Rieth, 78, of Wayne died Thursday, Nov. 29, 1990 at St. Luke's Hospital in Sioux City, Iowa.

Services were held Saturday, Dec. 1 at St. Paul's Lutheran Church in Concord. The Rev. Richard Carner officiated.

Jessie Myrtle Rieth, the daughter of William and Anna Rassmussen Sandahl, was born Feb. 25, 1912 on a farm near Carroll. She graduated from Carroll High School. She married Blair W. Jeffrey on June 29, 1934 at Sioux City, Iowa. They farmed until 1940 when they moved into Wayne. Blair died Oct. 22, 1966. Jessie married Fredrick Rieth on Nov. 11, 1971. The couple lived in Concord until 1983 when they moved into Wayne. She was employed at J.M. McDonalds in Wayne for 29 years.

Survivors include her husband, Fritz Rieth of Wayne; one daughter, Mrs. Bill (Pat) Piwenitzky of Julesburg, Colo.; one granddaughter, Cheryl Piwenitzky of Lincoln; one grandson, Craig Piwenitzky of Duncan, Okla.; and two great grandchildren.

She is preceded in death by her parents, first husband and three brothers.

Pallbearers were Ralph Etter, Duane Creamer, Bob Stanley, Charles Soderberg, Cliff Stalling and Roger Van.

Burial was in the Greenwood Cemetery in Wayne with Schumacher Funeral Home in charge of arrangements.

Edna Staver

Edna Staver, 70, of Pierce died Wednesday, Nov. 28, 1990 at a Norfolk hospital.

Services were held Saturday, Dec. 1 at Immanuel Lutheran Church in Hadar. The Rev. Jud Krohn officiated.

Edna G. Staver, the daughter of Adolph and Dora Meierdierks Baier, was born Sept. 9, 1920 at Wayne. She was baptized and confirmed at St. Paul's Lutheran Church in Wayne. She attended District #57 Wayne County school. She married William Staver on Feb. 25, 1942 at Wayne. The couple farmed in Wayne, Madison and Pierce Counties until retiring to Pierce in 1977.

Survivors include her husband, William of Pierce; one son, Glenn and Shirley of Meadow Grove; two daughters, Mrs. Larry Long of Beemer and Mrs. Robert (Sharon) Barjenbruch of Norfolk; three sisters, Mrs. Clyde (Inez) Baker of Wayne, Mrs. Rueben (Alta) Meyer of Wayne and Mrs. Clarence (Donna) Boeckenhauer of Wakefield; and six grandchildren.

Pallbearers were Perry Staver, Brian Barjenbruch, Steve Long, Roger Boeckenhauer, Randall Baker and Mark Meyer.

Burial was in the Hillcrest Memorial Cemetery in Norfolk with Stonacek Memorial Chapel in Pierce in charge of arrangements.

SPECIAL REMINDER To All Residents Of The City Of Wayne

With winter hanging over us, the Street Department again urges all residents to comply with city ordinances regarding snow removal on sidewalks, streets, off-street parking, gas station platforms, etc. Ordinance No. 8-202.1 states that all sidewalks must be cleared of snow or ice to full width of sidewalk within twenty-four hours after the storm, or the city will hire personnel to remove it and bill the property owner. Also a summons to appear in court for violation of the ordinance will be issued by the Police Department. All ordinances will be strictly enforced. In the business district, snow must be thrown into the street at least one foot from the curb as soon as possible to permit removal by street crews. Only snow from sidewalk out to the street is permitted to be dumped into the street for city hauling. All snow behind sidewalks, station, off-street parking, etc. will have to be removed by private operators. Reminder to Private Snow Removers, when clearing snow from driveways, parking lots or sidewalks snow is not permitted to be blown by snow blowers or pushed by machine back into the streets. This is also in violation of the City Ordinance and will be strictly enforced by the Police Department.

From The Region

Plans may save department money

CENTRAL CITY - Two plans presented to the Merrick County Health Department would retain the health departments control over public health services while shifting the home health care administrative duties to the Litzberg Memorial County Hospital.

According to a report in the Central City Republican-Nonpareil, home health care nursing would remain part of the health department while the second plan would have home health merge with the hospital.

Units being built to new addition

WAKEFIELD - Construction work began last week for a family housing project at 302 E. 9th St. in Wakefield.

The apartments are being built by Wakefield Family Housing, Inc. and are scheduled for completion by next summer. Vakoc Construction of Wayne is the developer of the project.

Three named to board

AREA - Three area men have been selected to serve on the LEAD X board, according to information from the Nebraska Leadership Council in its Fall 1990 publication.

Names included in the list are

Kevin Kai, Wakefield; Lowell Schardt, Wayne; and Doug Temme, Wayne.

The Nebraska Leadership Council board of directors was selected in August.

NOTICE

City of Wayne utility bills will arrive late in December due to computer maintenance.

PROFIT FROM FREE YEAR-END TAX SUGGESTIONS AT H&R BLOCK

Now is the time to look for some answers to your tax questions.

Call or stop by to discuss year-end tax matters and ways to reduce your 1990 taxes. Learn what you can do now to reduce your 1991 tax bill.

The experienced tax preparers at H&R Block regularly handle complex tax returns relating to complicated agricultural situations. Profit from our experience ...call us today.

120 WEST 3rd
 Wayne, NE 68787
 375-4144

H&R BLOCK
 THE INCOME TAX PEOPLE

Now you can have your
**CHRISTMAS
 LETTERHEAD**
 printed with
 a colorful border

Now through Monday, December 3, The Wayne Herald will be taking orders to print your 1990 Christmas Letterhead on 8 1/2 x 11 white paper using RED & GREEN ink appropriate for the holiday season. Make your Christmas letterhead even more special this year by using this design printed in RED & GREEN ink as a festive border. Advance orders placed by December 3 will be completed by Friday, December 7. Orders will be accepted in quantities shown below (or larger) and will include # 10 white envelopes.

Sets of 25..... \$7.00
 50..... \$12.00
 75..... \$17.25
 100..... \$22.50

SPECIAL OFFER

Add 20% to these white bond prices if you'd like to have this same red & green design printed on a special light green paper.



Dianne Jaeger
286-4504

PACK AND TROOP MEET

Webelo Cub Scout Pack 179 and Boy Scout Troop 179 met Nov. 25 for their monthly meetings with eight families present.

Cub Scout leader Joni Jaeger discussed popcorn and honey sales which will end Nov. 30 with deliveries beginning on Dec. 17.

The boys will meet on Dec. 4, 11 and 18 after school. Then on Dec. 18 they will hold a pack meet at 5 p.m. with a Christmas party.

One year perfect attendance pins were awarded to Zeke Brummels and Jeremy Jaeger. The Dave Jaeger family was host.

Boy Scout leader Kurt Schrant presented certificates for tote'n chip to all five boys present. They were Dereck Van Houten, Jerry Quick, Jason Jensen, Joshua Jaeger and Shawn Magwire.

Scout Badges and Fire'n-chip certificates were presented to Dereck, Jerry, Jason and Shawn. Dereck Van Houten was appointed scribe for the troop. On Nov. 23-24 the boys camped out, cooking their own meals and building a monkey rope bridge.

COMMODITIES

Wayne County food commodities for Winside area residents will be distributed in Winside on Thursday, Dec. 6 from 2-3 p.m. at the

village auditorium. Items to be distributed include butter, corn meal, flour, honey and peanut butter. If you are a low income family in the Winside area and have not previously received commodities, contact the Wayne County Social Service office or call Lorraine Prince at 286-4232 for more information. You will need your social security card and a utility bill for residence identification.

PRISCILLA CIRCLE

Pastor Jeffrey Lee led the Bible study "Reach Out" during the Nov. 26 LWML Priscilla Circle with nine members present. Lorraine Prince, president, conducted the meeting. Laura Jaeger led devotions. The treasurer report was given.

An invitation was received from Wayne Grace Lutheran LWML members to their Dec. 11 guest night.

There will not be a December meeting, therefore, the next meeting will be Monday, Jan. 28 at 7:30 p.m.

BOOSTERS

There will be a meeting of the Winside Area Boosters Sunday, Dec. 9 in the fire hall at 7:30 p.m. Items on the agenda include announcement of the 1990-91 Outstanding Citizen and discussion on the 1991 Old Settlers Celebration. All Winside area residents are encouraged to attend.

RESCUE CALL

The Winside volunteer rescue squad was called to the Don Backstrom home last Monday at 10:27 p.m. to transport Mr. Backstrom to Lutheran Community Hospital in Norfolk due to illness.

SENIOR CITIZENS

Twenty-one Senior Citizens met last Monday for an afternoon of games, cards and video movie. All November birthdays were observed with Barb Leapley as hostess.

There will be a Christmas party and dinner on Monday, Dec. 17. The next meeting will be today (Monday) for an afternoon of cards at 2 p.m. in the Legion Hall. All senior citizens are invited to attend.

BRIDGE CLUB

The Clarence Pfeiffers hosted the Nov. 27 Tuesday Night Bridge Club. Mr. and Mrs. George Voss became new members.

Prizes were won by Dorothy Jacobsen and Mr. and Mrs. Carl Troutman.

The next meeting will be Tuesday, Dec. 11.

ELEMENTARY PROGRAM

The Winside elementary children's Christmas program, "Santa Knows Best" will be held Friday evening, Dec. 7 in the high school gym at 7:30 p.m. The general public is invited to attend.

TOPS

Members of TOPS NE 589 met

Wednesday for weigh-in. The next meeting will be Wednesday, Dec. 5 with Marian Iversen at 5:15 p.m. Anyone wanting more information can call 286-4425.

SCHOOL CALENDAR

Tuesday, Dec. 4: Girls and boys basketball at Laurel, 6:15 and 8 p.m.

Thursday, Dec. 6: Picture retakes, 12:30 p.m.; wrestling at Pender with West Point, Pender and Winside, 6:30 p.m.; girls basketball, home, Newcastle, 6:15 p.m.

Friday, Dec. 7: Elementary Christmas program, high school gym, 7:30 p.m.

Saturday, Dec. 8: ACT testing; state one-act play; wrestling tournament at North Bend, 10 a.m.

Thanksgiving dinner guests in the Lena Miller home were Tim and Cynthia Miller of Santa Barbara, Calif.; Dean, Lori and Brandon Koehler of Osmond; the Otto Carstens of Norfolk; Judy and Chad Smith of Grand Island; and the Curt Carstens family of Lincoln.

The Dave Jaeger family hosted a noon Thanksgiving dinner on Nov. 25. Guests included the Dan Jaeger family, the Dirk Jaeger family, the Doug Jaeger family and the Dave Quinns, all of Winside; the Fritz Krauses of Norfolk; Minnie Graef of Wayne; the Keith Suehl family of Hoskins; and the Virgil Rohlfss of Omaha.

Laurel News

Renee Saunders
256-9318

OPERATION PACKAGE AIRLIFT

The American Legion Auxiliary will be busy wrapping and boxing all items that are donated to "Operation Package Airlift" tomorrow (Tuesday) at the Laurel city auditorium. The American Legion Auxiliary will supply care packages of personal and food items to those serving in the Middle East.

The first packages will be boxed and sent to local servicemen and women, so the sponsors are asking for those addresses. The sponsors are asking for a variety of things for the "Airlift," including food and personal items, volunteers to help

package, money for postage and mailing supplies and especially the addresses of all area servicemen and women.

Some requested food items include beef jerky, pop-top canned meats, sunflower seeds, potato chips in canister cans, hard candy, granola bars, trail mix, cereal snack packs, etc.

Anyone wishing to donate anything should contact Jan Twiford at 256-3191 or Ardis Cunningham at 256-3124.

LIGHTING CONTEST

To mark the beginning of the

holiday season, the Laurel Chamber of Commerce will once again host its annual outdoor lighting contest. Fifty dollar chamber certificates will be awarded to each winner in the following categories: most luminous (most lights), spirit of Christmas (religious) and Santa scenes (non-religious). Outside the Laurel city limits, a \$50 prize will go to the best overall entry.

Contestants must be registered by Dec. 8 at Dixies Plantation. The contest is open to all Laurel residents.

Judging will take place on the night of Dec. 14 by an out of town committee with the winners being

announced at the Chamber pancake feed on Dec. 15.

IMMANUEL WOMEN

The Immanuel Lutheran Woman's Society will hold a Christmas potluck supper Dec. 6 at 6:30 p.m. in the church basement. They will be revealing their secret sisters with a gift exchange. Hostesses for December are Marj Macke, Margaret Weyrich, Eva Fink, Vera Diediker and Virginia

BLOOD BANK

The Siouland Blood Bank will be accepting donations at the Laurel Presbyterian Church tomorrow (Tuesday) from 9 a.m. to 3 p.m.

Carroll News

Joni Tietz
585-4805

HAPPY WORKERS

Happy Workers met Wednesday in the home of Marie Bring. Ten members were present and two guests, Esther Hansen and Anna Johnson. Prizes went to Anna Johnson, Pauline Frink and Norma Davis.

The next meeting will be held Wednesday, Dec. 19 in the home of Gladys Rhode.

YOUTH FELLOWSHIP

The Methodist Youth Fellowship hosted a progressive dinner on

Nov. 18. A scavenger hunt followed the dinner.

SOCIAL CALENDAR

Monday, Dec. 3: Senior Citizens, no blood pressures will be taken.

Tuesday, Dec. 4: American Legion.

Wednesday, Dec. 5: Hilltop Larks Christmas party, Black Knight; Presbyterian Women.

Thursday, Dec. 6: EOT, Mrs. Raymond Reeg; Delta Dek, Elda Jones.

Saturday, Dec. 8: Town and Country Christmas party, Sharon Olsen.

Nov. 25 dinner guests in the home of Esther Hansen were Mr. and Mrs. Elmer Siedschlag of Norfolk, Jackie Tucker of Phoenix, Ariz. and her granddaughter, Mrs. John Lau of Phoenix, Ariz.

Thanksgiving guests in the John Dunklau home were Irene Dunklau, Jewell Barroso, Martine and Guillermo, all of Corsicana, Texas; Keith Dutcher of Sioux Falls, S.D.; Mr. and Mrs. LeRoy Barefield and Donita of Norfolk; Bill, Gene and Lucille Schwede of Hadar; and Gary Haselhorst of Randolph.

Visiting in the home of Mr. and

Mrs. John Dunklau Nov. 22-25 were Irene Dunklau, Jewell Barrowo, Martine and Guillermo, all of Corsicana, Texas. The group arrived for Thanksgiving and also for the baptism of D.J. Dunklau, son of Mr. and Mrs. John Dunklau.

Guests in the Gerry Hurlbert home to celebrate Thanksgiving and their daughter Kristen's 14th birthday were Mr. and Mrs. Louis Moritz of West Point, Mr. and Mrs. Steve Shlieker, Mitch and Katie of Fremont and Mr. and Mrs. Doug Moritz, Staci and Joe of West Point.

Hoskins News

Mrs. Hilda Thomas
565-4569

GARDEN CLUB

The Town and Country Garden Club met at the home of Mrs. Martha Behmer for a dessert luncheon last Monday. Mrs. Laura Ulrich was a guest. Mrs. Mary Jochens, president, opened the meeting with a Thanksgiving prayer, "To Our Father."

Members answered roll call by naming their favorite pie. Mrs. Martha Behmer read the report of the previous meeting and gave the treasurer's report. Members drew names for a Christmas gift exchange.

The hostess had the comprehensive study on gardening tips and read an article on "Snow on Evergreens."

The lesson, "Container Grown Plants" was given by Mrs. Mary Kollath.

The next meeting will be at the home of Mrs. Mary Jochens on Dec. 17 with a 1:30 dessert luncheon, followed by a social afternoon and gift exchange.

Mr. and Mrs. Larry Bruggeman

returned home last Monday. They had spent since Nov. 21 visiting her daughter and family, the John Adairs, at Santa Paula, Calif.

Jane Hanselman and Mr. and Mrs. Lawrence Fredricksen of West Bend, Iowa were Nov. 17 weekend guests in the Mr. and Mrs. Larry Bruggeman home. The women are sisters.

Youth Community Calendar

MONDAY, DECEMBER 3

Girl Scouts — Daisies, Methodist Church, 5:45 p.m.; 1st grade Brownies, St. Mary's, 7 p.m.; 2nd & 3rd grade Brownies, Redeemer Lutheran Church, 7 p.m.; Juniors, Methodist Church, 7 p.m.; Cadets, United Methodist Church, 7 p.m. Cub Scouts — 2nd grade Wolves, Masonic Lodge, 7 p.m.; 4th grade Webelos, Columbus Federal, 6:30 p.m.; Boy Scouts, Christmas party, St. Paul's Church, 7 p.m. Speaker from NPPD, 3rd graders, 1 p.m. 7th & 8th girls basketball, home, Schuyler, Auditorium, 4:30 p.m. 7th & 8th boys wrestling at Schuyler German-Club Christmas party, high school home ec. room, 6 p.m.

TUESDAY, DECEMBER 4

FRIENDS group to speak to 2nd graders 5th grade Webelos, 308 Lincoln, 3:30 p.m. 9th girls basketball, home, Randolph, City Auditorium, 5 p.m. Wrestling at West Point, 7 p.m. 9th boys basketball, home, Randolph, City Auditorium, 6 p.m. Middle School choir Christmas concert, High School lecture hall, 7:30 p.m.

WEDNESDAY, DECEMBER 5

3rd grade field trip to Waldbaum's, 12:45 p.m. City recreation basketball practice — 3rd & 4th grade boys, 3:30-4:30 p.m.; 5th & 6th grade boys, 4:30-5:45 Awana — K-2, Evangelical Free Church, 3-6, Armory, 6:45 p.m. THURSDAY-FRIDAY-SATURDAY, DECEMBER 6-7-8 Middle Center open, 7-10 p.m.

THURSDAY, DECEMBER 6

FRIENDS group to speak to 4th graders Rainbows for all God's Children, K-8 grades, St. Mary's School, 4:30 p.m. 7th & 8th boys basketball, home, West Point, City Auditorium, 4:30 p.m. Cub Scouts — 3rd grade Bears Den 2, 1015 Poplar Street, 7 p.m. Girls basketball, home, JV and varsity games, Battle Creek, high school, 6:15 p.m. 9th boys basketball, home, Laurel, City Auditorium, 6:45 p.m.

FRIDAY, DECEMBER 7

City recreation basketball practice — 3rd & 4th grade girls, 3:30-4:30 p.m.; 5th & 6th grade girls, 4:30-5:45 St. Mary's early dismissal for faculty meeting, 11:30 a.m.

SATURDAY, DECEMBER 8

Wrestling at West Point Invite, 10 a.m. Wrestling at Stanton Invite, 11 a.m. ACT testing, WSC Free show at Gay Theatre, "Turner and Hooch", 2 p.m. 7th & 8th girls basketball at Pierce, 9:30 a.m. 7th & 8th boys basketball at Pierce, 10:30 a.m. Boys basketball at South Sioux City, JV and varsity, 6:15 p.m. State one-act plays at Grand Island Church Christmas program practice — Evangelical Free Church, 9-11 a.m.; Redeemer Church, 9:30-11 a.m.; Grace Lutheran Church, 9:30-11 a.m.; St. Paul's Church, noon-1:30 p.m.

SUNDAY, DECEMBER 9

Presbyterian Christmas program, 9:45 a.m. Redeemer Jr. High Youth, meet at church, 2 p.m. Christmas caroling, Methodist Youth, 2:30 p.m. Grace Lutheran LYF Christmas party, Beckmans, 5 p.m. Presbyterian Youth, 6:30 p.m.

For any corrections or additions to this listing, please contact Imogene at 375-4998 (home) or 375-3455 (work) and leave a message. Deadline is Thursday noon.

May go to state

WHS drama team takes first place

WAYNE - Wayne High School drama students took first place honors at the Northern Activities Conference one-act play competition held recently at WHS.

Wayne's production of "Marat Sode" by Peter Weiss was cited for outstanding acting and staging by the judges. Ben Wilson, a senior from Wayne, was named as best actor in the conference and Jennifer Schmitz, a sophomore, was named as best actress.

Runner-up was O'Neill High School with a production of "The Little Toy Dog." South Sioux City and Hartington Cedar Catholic also


took part in the competition with productions of "Once Upon a Play-ground" and "The Best Christmas Pageant Ever", respectively.

Wayne's next competition was districts, which were held at Pierce Saturday. The team of students that take first place at districts will compete in state competition in Grand Island Dec. 8.

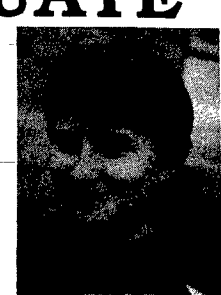
Others included in Wayne's cast include: Darin Flatmoe, Jay O'Leary, Kathy Guilliam, Mike Fluent, Sam Wilson, Jason Polt, Kerry McCue, Dan Janke, Jamie Kaup and Mike Eckhoff. The play is directed by Ted Blenderman.

WAYNE-CARROLL HIGH SCHOOL

HONORED GRADUATE



1981



1990

Nancy Nuss

Year of graduation: 1981 — Salutatorian
Current Status & Honors: Nancy received a BA degree in English literature from Carleton College in Northfield, Minn. in 1986. Following her graduation, she was employed in the tissue research department at the Shriners' Burn Institute in Cincinnati, Ohio. In 1987 she went to work for Waldenbooks, and since last April has managed her own Waldenbooks store in West Virginia. She resides in Vienna, WV.

How my Wayne-Carroll experience helped me prepare for life after high school graduation:
"The staff at Wayne High, in particular Judith Schafer and Ann Meyer, always encouraged me in my academic pursuits. Indeed, this love for learning prompted me to seek a career in the world of books. Managing a bookstore allows me to continue to promote reading and learning. Especially in these times of high illiteracy in West Virginia. We are also working with local shelters to collect donations for the homeless. On another front, we are currently collecting book donations to ship overseas to our troops in Saudi Arabia. My experience at Wayne High and in my career has reinforced my belief that one person can make a difference."

A Proud Booster of Wayne-Carroll High School


The State National Bank and Trust Company
Wayne, NE 68707 • 402/375-1130 • Member FDIC
Sells Wash 114 Wash 100 • Drive-In Bank 10th & 14th

WAYNE-CARROLL HIGH SCHOOL — WINSIDE HIGH SCHOOL


STUDENTS OF THE MONTH

We are proud to be a part of these Communities and recognize these students as our area's Number 1 resource.

FIRST NATIONAL AGENCY




GARY BOEHLE & STEVE MUIR
Phone: 375-2511
Wayne, Nebraska



BECKY APPEL

Becky is the daughter of Gary and Darlene Appel of Rural Route Hoskins. She is a sophomore at Winside High School. Becky participates in Varsity Basketball. She is on the Speech Team and was a crew member for the 1-Act Play. She was in the Fall Musical and participates in Vocal Music. Becky plays the clarinet in the Winside Band. She is an active member of 4-H working in livestock judging, horses, and baking. She is also an active member of her Church Youth Group. Becky is an honor roll student at Winside High School.

WAYNE'S ENTERTAINMENT CONNECTION




JONES INTERCABLE

120 WEST 3RD
WAYNE, NE.
375-1120

All Kinds
Of Good Stuff @

Hardee's

602 Main — Wayne



JEFF GRIESCH

Jeff is the son of Mark and Carol Griesch. He is a senior at Wayne High School and will graduate in May with the class of 1991. Academic recognition includes honor roll, Kiwanis Honor Student, and 1990-91 National Merit Commended Student. Jeff was also recognized as a World Herald Distinguished Scholar. Leadership responsibilities include president of the senior class, president of National Honor Society, vice-president of band, and secretary of W-Club. Jeff also is active in Spanish Club. He played on the 1990 Class B State Championship baseball team and participates in basketball where he earned Academic All-State honors. Jeff will attend college and pursue a major in broadcast/journalism in preparation for a career as a sports announcer and/or writer. Jeff is a member of Redeemer Lutheran Church and active in the youth group there.

FARMER'S CO-OP

•FEED •FERTILIZER
•FUEL •CHEMICALS

See us for all your needs!

PILGER
396-3414
WINSIDE
286-4277

City lists snow removal rules and regulations

WAYNE - Tuesday's snowfall and winter-like conditions brought out the city's snow-clearing equipment in full-force for the first time in several months.

The City of Wayne is responsible for snow removal and ice control on about 35 miles of streets and 12 miles of alleys, plus three cul-de-sac areas.

When it becomes necessary, the city will declare a "snow emergency" based on either the current weather conditions (snow, sleet or freezing rain) or a forecast by the area weather bureaus.

Five hours after the declaration of a snow emergency (announced on KTCH radio), no car can be parked on any of the streets in Wayne. This will allow city crews to clean the streets full width.

PARKING WILL BE PROHIBITED on any municipal street where there has been an accumulation of snow and ice of five inches or more — for one hour or more — between 7 a.m. and 10 p.m. of any day.

Members of the police or public works department have been authorized to remove vehicles from streets to the nearest garage or other places of safety when the vehicle violates the parking prohibition. The policy also extends to a stalled vehicle.

Snow plow operators will not clear private driveways. The snow placed in driveways by snow plows are the responsibility of the property owner to remove. Snow from a private driveway cannot be scooped or snow blown on city streets. Placing snow into the city street requires the public works department to come back and remove the snow at taxpayers' expense.

IT IS UNLAWFUL for property owners to allow snow, sleet, mud or ice to accumulate on any sidewalk abutting their lot. The sidewalks should be cleaned off within 24 hours after the storm. If not removed, the city could hire personnel to remove it and then bill the property owner. The ordinance will be strictly enforced.

In the business district, snow must be thrown into the street at least a foot from the curb as soon as possible to permit removal by street crews.

Legal Notices

Abbreviations for this legal: PS-Personal Services, OE-Operating Expenses, SU-Supplies, MA-Materials, ER-Equipment Rental, CO-Capital Outlays, RP-Repairs, RE-Reimbursement.

WAYNE COUNTY BOARD PROCEEDINGS

Wayne, Nebraska
November 20, 1990
The Wayne County Board of Commissioners met in regular session at 9 a.m. on Tuesday, November 20, 1990 in the meeting room at the Courthouse.

Roll call was answered by Nissen, Chairman; Members, Pospisil and Beiermann and Clerk, Morris.

Proof was offered that the meeting had been advertised in the Wayne Herald, a legal newspaper, on November 15, 1990.

Motion by Pospisil and seconded by Beiermann that whereas the Clerk has prepared copies of the minutes of the last regular meeting for each Commissioner and that each Commissioner has had an opportunity to read and study same, that the reading of the minutes be dispensed with and declared approved. Roll call vote: Pospisil-Aye; Beiermann-Aye; Nissen-Aye. No Nays.

The following officer reports of fees collected during the month of October and remitted to State and County Treasurers as follows: Orretta C. Morris, County Clerk, \$4001.97.

Bids were opened at 10 a.m. for the remodeling project of second floor offices in the Courthouse. Bids were received from Ote Construction and Loberg Construction Co. A carpet bid was received from Carhart Lumber Co. Motion by Beiermann, seconded by Pospisil to accept the bid of Ote Construction Company. Roll call vote: Beiermann-Aye; Pospisil-Aye; Nissen-Aye. No Nays.

Motion by Beiermann and seconded by Pospisil to accept the bid of Ellington Motors on a 1990 Chevrolet pickup. Bids had been received and opened at the last regular meeting of the Board. Roll call vote: Beiermann-Aye; Pospisil-Aye; Nissen-Aye. No Nays.

Motion by Pospisil and seconded by Beiermann to approve the Resolution approving a substitution of securities by the Farmers State Bank, Carroll, Nebr. Roll call vote: Pospisil-Aye; Beiermann-Aye; Nissen-Aye. No Nays.

Motion by Pospisil and seconded by Beiermann to approve the request of U S West Communications to bury telephone facilities in Wayne County right-of-way. Roll call vote: Pospisil-Aye; Beiermann-Aye; Nissen-Aye. No Nays.

Motion by Pospisil and seconded by Beiermann to accept the carpet bid of Carhart Lumber Company for the second floor remodeling project. Roll call vote: Pospisil-Aye; Beiermann-Aye; Nissen-Aye. No Nays.

The following claims were audited and allowed. Warrants to be ready for distribution on November 30, 1990.

GENERAL FUND: Salaries, \$38,861.10; Election Payroll, PS, OE, 3344.89; Budd Bornhoff, ER, 475.00; CTB, SU, 155.39; Colonial Research Chemical Corp., SU, 127.40; Complete Computer Systems, Inc., OE, 177.00; Jeffrey J. Conway, OE, 185.50; Lynda Cruickshank, SU, 8.67; D.A.S. Material Division, SU, 83.94; Dial-Net Systems, OE, 552.63; ESU 1, OE, 10.00; Eahes Office Products Center, SU, 139.38; Ecobal Pest Elimination Service, OE, 28.00; Robert Enz, RE, 187.64; Farm & Home Publishers, SU, 575.00; Pearl Hansen, ER, 25.00; Hoskins Fire Dept., ER, 25.00; IBM, RP, 36.96; LeRoy W. Janssen, PS, 10.00; Johnson's Inc., SU, 4.48; Michele Keyes, PS, 40.00; Maxine Kraemer, RE, 15.43; Mindy Lutt, RE, 10.74; Harry D. Mills, RE, 5.88; Modern Business Systems, SU, 61.00; Morning Shopper, SU, 436.80; Orretta C. Morris, RE, 5.80; Msnys Sanitary Service, OE, 28.00; Douglas Muth, PS, 10.00; NPPD, OE, 22.57; Arne Noite, RE, 69.83; Norfolk Office Equipment, SU, 49.90; Office Connection, SU, RP, MA, 250.87; Office Products Ctr., RP, 80.32; Olds & Enz, PS, 850.00; O'Neill Book & Office Store, SU, 36.52; Joann Ostrander, RE, 66.06; QAC Extension Service, OE, 291.27; Quality Food Center, SU, 78.70; Pamida, Inc., SU, 1.49; Postmaster, OE, 65.00; Catherine Ptak, ER, 300.00; Joyce Reeg, RE, 4.65; S.T.A.R.T., CO, 50.00; School District #25, ER, 25.00; Servall Towel & Linen Supply, OE, 98.20; Sioux City Stationery Co., SU, 29.97; Thurston County Sheriff, OE, 245.00; The Travelers Companies, PS, 20,341.81; U S West Comm., OE, 430.69; University of Nebr., PS, 3836.43; Warnemunde Insurance, OE, 132.00; Wayne County Clerk of District Court, OE, 85.50; Wayne County Clerk, OE, 25.00; Wayne County Juvenile Detention Ctr., OE, 15.00; Wayne County Sheriff, OE, 190.00; Wayne Herald, OE, 25.00; Western Typewriter & Office Supply, SU, 62.77.

COUNTY ROAD FUND: Salaries, \$12,209.86; Backus Sand & Gravel, MA, 5637.53; Colonial Research Chemical, SU, 81.67; Dave's Body Shop, RP, 100.00; Farmers Cooperative, RP, MA, 1161.06; Floor Maintenance & Supply, Inc., SU, 165.00; Fruhehaul Corporation, RE, 33.28; Gerhold Concrete, MP, 1212.75; H. McClain Oil Co., RP, MA, 250.87; Hammer Radiator & Repair, RP, 1009.55; Kimball Midwest, SU, 153.70; Mid Nebraska Comm., RE, 120.38; Nelson Repair, RP, 126.30; Pamida, SU, 10.99; Pilger Sand and Gravel, Inc., MA, 2097.89; Servall Towel & Linen Supply, OE, 13.50; Siouxiand Hydraulic, RP, 366.90; U S West Communications, OE, 271.60; Zach Oil Company, MA, 495.82.

COUNTY RELIEF FUND: Hall County Nebraska, OE, 81.75; Salary, 12.00.

REGIONAL CENTER FUND: Beatrice State Development, OE, 186.00.

INHERITANCE TAX FUND: Data Master, CO, 950.00.

REVENUE SHARING FUND: Ellington Motors, Inc., CO, 10,505.00.

SPECIAL POLICE PROTECTION FUND: M & H Apco, OE, 2.25; Jay Langemeier, PS, 10.00; Doug Muth, RE, 6.80; Richard Reed, PS, 10.00; Ron's Radio, ER, 184.15; Salaries, 2625.00.

JUVENILE DETENTION FACILITY FUND: Salaries, 1152.05; AT & T, CO, 39.00; Dial-Net, OE, 56.42; Ecobal Pest Elimination, OE, 21.00; Delores Gable, RE, 15.00; Msnys Sanitary Service, OE, 28.00; Pamida, Inc., SU, 140.32; Servall Towel & Linen Supply, OE, 25.25; Thompson Co., Inc., OE, 766.87; U S West Comm., OE, 183.62; Wayne Herald, OE, 13.55; Wayne True Value, SU, 9.64; Western Paper & Supply, Inc., SU, 55.44.

NOXIOUS WEED CONTROL FUND: Salaries, 1280.00; Cornbelt Chemical Co., MA, 1422.00; Diers Supply, RP, 12.59; Bill Fenske, RE, 23.93; Fredrickson Oil Co., MA, 168.51; Mike Karei, RE, 9.00; Lester Menke, RE, 33.48; Nebr. Weed Control Assoc., OE, 75.00; Peoples Natural Gas, OE, 11.10; Don Pippitt, RE, 19.78; Martin Schuttler, RE, 107.11; U S West Comm., OE, 44.54; The Wayne Herald, OE, 3.90.

There being no further business, the meeting was adjourned, on motion by Beiermann and seconded by Pospisil. Roll call vote: Beiermann-Aye; Pospisil-Aye; Nissen-Aye. No Nays.

ORGETTA C. MORRIS, COUNTY CLERK

STATE OF NEBRASKA) ss.
I, the undersigned, County Clerk for the County of Wayne Nebraska, hereby certify that all of the subjects included in the attached proceedings were contained in the agenda for the meeting of November 20, 1990, kept continually current and available for the public inspection at the office of the County Clerk; that such subjects were contained in said agenda for at least twenty-four hours prior to said meeting; that the said minutes of the meeting of the County Commissioners of the County of Wayne were in written form and available for public inspection within ten working days and prior to the next convened meeting of said body.

In Witness Whereof I have hereunto set my hand this 26th day of November, 1990.
Orretta C. Morris, Wayne County Clerk (Publ. Dec. 3)

Abbreviations for this legal: Ex, Expense; Fe, Fee; Gr, Groceries; Mi, Mileage; Re, Reimbursements; Rpt, Report; Sa, Salaries; Se, Services; Su, Supplies.

WAYNE CITY COUNCIL PROCEEDINGS

November 13, 1990
Wayne City Council met in regular session at 7:30 p.m., November 13, 1990. In attendance: Mayor Marsh, Council members Fifer, O'Leary, Heier, Fuelberth, Barclay, Johnson, Hansen and Lindau; Attorney Enz; Administrator Saltrios; Clerk Brummond.

Minutes of regular meeting of October 30, 1990, and the special meeting of November 6, 1990, were approved.

The following claims were approved.
PAYROLL: 25019.91.

ADDITIONS AND CORRECTIONS TO 10-30-90 CLAIMS LIST: Electric Fixture, Su, 184.35 and Wigan Co., Su, 160.32.

VARIOUS FUNDS: A.B. Dick, Su, 80.86; Admil Express, Se, 180.30; Ameritas Life Ins. Corp., Re, 597.44; AT&T, Re, 22.95; Automotive Index, Su, 29.77; Barco Mun. Products, Su, 18.95; Ben Franklin, Su, 19.37; Bentback Clinic, Re, 10.00; Blue Cross Blue Shield, Re, 95.00; Bruce Gilmore & Assoc., Se, 400.00; Business Management Solvware, Su, 4315.00; Carhart Lumber Co., Su, 167.98; Christian Library, Su, 1239.47; Complete Computer, Su, 22.98; Cornhusker State Ind., Su, 771.50; Crescent Electric, Su, 137.96; Diamond Vogel Plant Center, Su, 68.57; Dutton Lainson Co., Su, 136.09; Eastern Chemical Co., Su, 59.95; The Final Touch, Su, 18.90; Flexcomp Planners, Inc., Fe, 132.00; Fredrickson Oil Co., Su, 79.54; L.P. Gill Inc., Se, 5217.14; Heikes Automotive, Re, 37.95; Holiday Inn Lincoln Northeast, Re, 325.73; Howard R. Green, Se, 45.22; Iowa Office Supply, Inc., Re, 237.00; Jack's Uniforms & Equip., Su, 423.74; KGLI-FM, Se, 705.00; Kiwanis, Fe, 63.00; KNEB, Se, 290.10; Kriz-Davis Company, Su, 763.98; League of Nebr. Mun., Fe, 1054.78; Linwood, Su, 170.91; Mentor Systems, Inc., Su, 116.56; Michael Todd, Su, 3607.13; Midwest Insulation Services, Se, 11.05; Midwest Paper, Su, 77.49; Midwest Tree Moving, Se, 260.00; Mutual Benefit Life, Re, 1213.63; Nebr. Dept. of Env. Control, Fe, 25.00; Nebr. Dept. of Health, Fe, 200.00; Nebr. Dept. of Revenue, Re, 9012.89; Nebr. Floral Gifts, Su, 7.33; Nebr. Machinery Co., Su, 1500.00; Office Connection, Su, 1.58; Pac 'N' Save, Su, 11.69; Pamida, Inc., Su, 144.49; Paris Trucking, Inc., Su, 511.46; Peoples Natural Gas, Re, 247.76; Peterson Tire Service, Su, 205.28; Police Officers Assn. of Nebr., Su, 28.00; Presto-X-Co., Se, 24.50; Providence Medical Center, Re, 3224.25; Rite-Style Optical Co., Su, 317.05; Sav-Mor Pharmacy, Su, 6.54; Seals & Service, Inc., Re, 45.00; Servall Towel, Se, 154.70; Sioux Valley Communications, Su, 35.56; Skarshaug Testing Lab., Inc., Se, 49.84; Solomon Corp., Re, 1915.00; Sorbus, Se, 246.94; S.T.A.R.T., Se, 100.00; State Nat'l. Ins., Re, 703.45; State of Nebr., Se, 385.00; Travelers Ins. Co., Re, 5349.06; Travelers, Fe, 1247.54; U.S. West, Se, 2152.70; Water Products of Nebraska, Su, 67.36; Wayne Auto Parts, Re, 25.97; Wayne Public Power District, Se, 1502.45; Wayne County Treasurer, Fe, 355.35; Wayne Family Practice, Se, 25.00; Wayne Greenhouse, Su, 44.50; Wayne Herald, Se, 838.32; Wayne Sporting Goods, Su, 110.90; Wayne's True Value, Su, 25.87; Wayne Vet Clinic, Se, 66.00; Wesco, Su, 439.95; Western Paper Supply, 23.95; West Point Cleaners, Se, 132.50; Woodmen Accident & Life Co., Re, 11822.56; City of Wayne, Sa, 25019.91; State National Bank, Sa, 8270.28; ICMA, Sa, 951.54; Nebr. Dept. of Revenue, Sa, 875.14; Wayne County Court, Re, 60.21; Postmaster, Re, 400.00; City of Wayne, Re, 35.07; Wigan Co., Re, 17.03; Electric Fixture & Supply Co., Su, 55.07; Postmaster, Su, 297.70; National Safety Council, Su, 55.00; City of Wayne, Re, 345.17.

Flexcomp Benefit Account, Re, 667.68; Heiland Electric, Inc., Re, 8734.93; Utility Customers, Re, 204.97; Medical Expenses, Re, 953.42; Robert Stanley, Re, 348.25; Kenneth Sitzman, Re, 322.60.

Ordinance No. 90-24 relating to City Administrator and repealing conflicting section was adopted.

Meeting adjourned at 7:35 p.m.
THE CITY OF WAYNE, NEBRASKA

ATTEST:
City Clerk (Publ. Dec. 3)

ORDINANCE NO. 90-26
AN ORDINANCE RELATING TO OCCUPATION TAX FOR PLUMBERS; TO INCREASE THE RENEWAL FEE, AND TO REPEAL THE ORIGINAL SECTION.

BE IT ORDAINED BY THE Mayor and Council of the City of Wayne, Nebraska,
Section 1. That Section 10-410.01 of the Wayne Municipal Code is amended to read as follows:

Section 10-410.01. **PLUMBERS; OCCUPATION TAX.** For the purpose of raising revenue, an occupation tax is hereby levied in the amounts set forth, to-wit:

Master plumber, journeyman plumber, original registration.....\$25.00
Same, annual renewal.....10.00
The City Clerk shall collect all fees, permits, taxes, and renewals thereof and credit the same to the City General Fund.

Section 2. Original Section 10-410.01 is repealed.

Section 3. This ordinance shall take effect and be in full force from and after its passage, approval, and publication as required by law.

Passed and approved this 27th day of November, 1990.

THE CITY OF WAYNE, NEBRASKA
By (s) Wayne D. Marsh
Mayor

ATTEST:
Carol J. Brummond CMC
City Clerk (Publ. Dec. 3)

ORDINANCE NO. 90-27
AN ORDINANCE RELATING TO OCCUPATION TAX FOR ELECTRICIANS; TO INCREASE THE RENEWAL FEE, AND TO REPEAL THE ORIGINAL SECTION.

BE IT ORDAINED BY THE Mayor and Council of the City of Wayne, Nebraska,
Section 1. That Section 10-616 of the Wayne Municipal Code is amended to read as follows:

Section 10-616. **ELECTRICAL CODE; OCCUPATION TAX.** For the purpose of raising revenue, an occupation tax is hereby levied in the amounts set forth, to-wit:

Master electrician, electrical contractor's license, journeyman's license or apprentice permit, original registration.....\$25.00
Same, annual renewal.....10.00
The City Clerk shall collect all fees, permits, taxes, and renewals thereof and credit the same to the City General Fund.

Section 2. Original Section 10-616 is repealed.

Section 3. This ordinance shall take effect and be in full force from and after its passage, approval, and publication as required by law.

Passed and approved this 27th day of November, 1990.

THE CITY OF WAYNE, NEBRASKA
By (s) Wayne D. Marsh
Mayor

ATTEST:
Carol J. Brummond CMC
City Clerk (Publ. Dec. 3)

NOTICE OF PUBLICATION OF ORDINANCE NO. 90-25 OF THE CITY OF WAYNE, NEBRASKA, IN PAMPHLET FORM

Public Notice is hereby given that the Mayor and City Council of the City of Wayne, Nebraska, at a meeting held at 7:30 p.m. on November 27, 1990, passed Ordinance No. 90-25 relating to occupation tax; to eliminate the tax for fire insurance companies; to eliminate conflicting provisions for electricians, fire-works vendors, garbage haulers and plumbers; to repeal original section; to provide an effective date.

Said Ordinance is published in pamphlet form and copies of said Ordinance as published in such pamphlet form are available for inspection at the office of the City Clerk at the City Hall.

Dated this 28th day of November, 1990.
Carol J. Brummond, CMC
City Clerk

(SEAL) (Publ. Dec. 3)

NOTICE
There will be a meeting of the Wayne Recreation Board, Monday, December 3, 1990 at 6:30 p.m. in the Wayne City Hall. An agenda for the meeting is available in the City Clerk's office.

Jim Keating, Secretary (Publ. Dec. 3)

NOTICE
Estate of Eldon H. Barelim, Deceased.
Notice is hereby given that the Personal Representative has filed a final account and report of his administration, a formal closing petition for complete settlement for formal probate of will of said deceased, for determination of heirship; and a petition for determination of inheritance tax; which have been set for hearing in the Wayne County, Nebraska Court on December 27, 1990, at 1:00 o'clock p.m.

(s) Pearl A. Benjamin
Clerk of the County Court
Oids and Enz
Attorney for Petitioner (Publ. Dec. 3, 10, 17)

NOTICE OF MEETING
Notice is hereby given that the Planning Commission of the City of Wayne, Nebraska, will meet in regular session on Monday, December 3, 1990, at 7:30 p.m. in the City Hall. Said meeting is open to the public and the agenda is available at the office of the City Clerk.

Carol Brummond, City Clerk
Wayne Planning Commission (Publ. Dec. 3)

Deadline for all legal notices to be published by The Wayne Herald is as follows: 5 p.m. Monday for Thursday's paper and 5 p.m. Thursday for Monday's paper.

Every government official or board that handles public moneys, should publish at regular intervals an accounting of it showing where and how each dollar is spent. We hold this to be a fundamental principle to democratic government.



We are your newest banking partner in the Wayne area. Farmers and Merchants State Bank of Wayne is located in the former Occidental Nebraska building in downtown Wayne. You'll find our interest rates very competitive and you'll find our people very capable and anxious to serve you. Regardless of the nature of your banking needs we hope you'll stop in and let US be YOUR bank....

Farmers & Merchants state bank
Wayne, Nebraska 68787
MEMBER FDIC

NEBRASKAland Calendar of color



The morning after snow in Nebraska's rural areas on winter. The trees and the sky are covered in snow. In the distance, a small town is visible.

January

SUNDAY	MONDAY	TUESDAY	WEDNESDAY	THURSDAY	FRIDAY	SATURDAY
		1 <small>NEW YEAR'S DAY (Observed on Monday, Jan. 1)</small>	2	3	4	5 <small>The Epiphany (Observed on Monday, Jan. 8)</small>
6	7	8	9 <small>Lincoln's Birthday (Observed on Monday, Jan. 15)</small>	10	11	12 <small>Lucas Festival of 1990</small>
13	14	15	16 <small>The Nebraska Tercentennial (Observed on Monday, Jan. 22)</small>	17	18	19
20	21 <small>MARTIN LUTHER KING, JR. AIR DAY</small>	22	23	24	25	26
27	28	29	30	31		

1991 NEBRASKAland Calendar

Last Quarter 7th
 New Moon 15th
 First Quarter 23rd
 Full Moon 30th

NOW ON SALE AT THE WAYNE HERALD

\$5.00 PLUS TAX

HELP WANTED

Inspector/Quality Control person for the Weatherization program to work in 14 counties in Northeast Nebraska. Carpentry knowledge, math aptitude and ability to do office paperwork necessary for liaison with contractors. Furnace experience helpful. Must be physically capable and meet company's driver and insurance requirements. Work station, GRHCAA central office, Wisner. 40 hour week. Send resume to Goldenrod Hills Community Action Agency, Weatherization Program, Box 280, Wisner, NE 68791. Closing date December 17, 1990, 4:30 p.m. Phone (402) 529-3513. 100% Federally Funded. AN EQUAL OPPORTUNITY EMPLOYER.

QUALITY NURSING ASSISTANTS are needed for all shifts. We will pay you for the 75 hour Nurse Assistant Training Course. Apply in person to: Wakefield Health Care Center, 306 Ash St., Wakefield, Nebraska 68784. Jy23if

ON-FARM research coordinator. 1/2 time position based in NE Nebraska. Contact Sam Walsch, 402-254-2289. Nebraska Sustainable Agriculture Society, PO Box 736, Hartington, NE 68739. D32

LOANS BY MAIL

Up to \$5000.00 in 72 hours.

We can help you get a signature loan by mail.

1-900-468-7427. \$9.95 fee.

ACCEPTING applications for RN or LPN night shift charge. Also accepting applications for CSM or Nursing Assistant, night shift. Contract Director of Nursing, 402-375-1922. N51f

First Step, Inc. is taking applications for a **Case Manager / Systems Coordinator** to provide services for SPMI clients in Region IV. Position will involve some travel. Requirements - a bachelors degree in related field or current RN license. Send resume to J. Bottger, Box 215, Wayne, NE 68787.

WANTED: Floor maintenance person with experience. Night shift. Apply at **Wal-Mart** Norfolk - 371-8363.

Region IV Office of Dev. Disabilities (Central Office) is seeking a **Personnel Records Clerk**. Starting wage \$903.67/mo. Fringe benefits include personnel leave & insurance. Qualifications to include: high school diploma, bookkeeping and/or clerical skills and experience and computer skills. Closing date: 12/10/90. Apply or send resume to: Craig Tiedtke, Dir. of Fiscal Mgmt, Box 280, 209 1/2 S. Main, Wayne, NE 68787. Starting date: 12/17/90.

Local professional office seeking full-time receptionist with good communication and organizational skills. Individual will be responsible for office scheduling, accounts receivable, insurance claim filing and correspondence. This individual must be someone who is comfortable working with the public and who works well in a team situation. Please send resume to **RECEPTIONIST**, P.O. Box 70, Wayne, NE 68787.

ELECTRICIAN

The Milton G. Waldbaum Company has an outstanding opportunity for an **ELECTRICIAN**. This is a day shift position averaging 50 hours per week. The ideal candidate will have 1-2 years of electrical experience and a knowledge of motor controls and general wiring. We offer a competitive benefit package and a salary commensurate with experience. Interested candidates should send resume with salary history to: **THE MILTON G. WALDBAUM COMPANY, Personnel Department, 105 North Main Street, Wakefield, NE 68784** EOE/AA



The Milton G. Waldbaum Company

has the following positions available:
***Weekend Manure Dryer Operator** - 6:00 a.m. - 6:00 p.m., \$7.50/hour.
***Husker Pride Cleanup** - Fulltime - 3:30 p.m. - 11:30 p.m. Starting wage is \$5.00/hour + 15¢ shift differential.
***Technical Clerk** - Fulltime - 8:00 a.m. - 5:00 p.m. Clerical duties for the Technical Director and Quality Control.
 We offer an attractive benefit package including free daycare.

Interested people can apply at our office in Wakefield, Nebraska EOE/AA



HEALTH CARE DIRECTORY

Providence Medical Center

1200 PROVIDENCE ROAD • WAYNE, NEBRASKA 68787

To serve you better the following Out Patient Clinics, Services and/or Mobile Services are available at the Providence Medical Center in Wayne. For more information contact your local physician or Providence Medical Center (375-3800). Ask for either Louise Jenness, Joan West or Marcie Thomas.

OB/GYN Clinic - Raymond Schulte MD, Omaha
ORTHOPEDIC/SPORTS MEDICINE CLINIC - (NEW)
 David Brown MD, Omaha
ORTHOPEDIC CLINIC - David Meyer MD, Kearney
UROLOGY CLINIC - Cecil T. Bromfield MD, Lincoln
EARS/NOSE/THROAT CLINIC - Thomas J. Teag MD, Lincoln
CARDIOLOGY CLINIC - J. T. Baller MD, Sioux City
 Allan Manalan MD, Sioux City
 Diane Worth MD, Sioux City
 William Wanner MD, Sioux City
 Steve Zumbun MD, Sioux City
GASTROENTEROLOGY CLINIC - James Hartle MD, Sioux City
ALLERGY CLINIC - (NEW) James Oggle MD, Sioux City

SERVICES:
 Mammography / Radiology, Ultrasound, CT scan (mobile) - Sister Kevin Hermon RRT - Robert Walker, MD Chief Radiologist
 Physical Therapy (full time) - Diane Maskell, RPT
 Cardiac Rehabilitation - Terri Muntor, RN - Pam Matthes, RN
 Dietitian - Kristin Helmes, RD
 Life Line - Sister Monica Backes RN
 Speech Therapy - Michelle Dudley, SLP, Norfolk
 Hospice - Wanda Kucera
 Well Baby Clinic - Respiratory Therapy - Judy Woehler LRCP, CRTT
 Home Health Care - Terri Muntor, RN - Kay Burrell, LPN - Kathy Geier, RN
 Ambulance Service - Louise Jenness, RN
 Social Service Coordinators - Verlyn Anderson, RN & Joan West, LPN
ECHOCARDIOGRAPHY - VENOUS & CAROTID DOPPLER
LOCAL PHYSICIANS - Robert Benthack MD - Benjamin Martin MD
 - Willie Wiseman MD - James Lindau MD - Dave Felber MD
 Physician's Assistant - Gary West, PAC
OTHER SPECIALISTS - OB/GYN - Keith Vrblicky MD, Norfolk
 GENERAL SURGERY - Harold Dahlheim MD, Norfolk

ALL I KNOW OF TOMORROW IS THAT PROVIDENCE WILL RISE BEFORE THE SUN



FUTURE CLINICS
 •OPHTHALMOLOGY EYE CLINIC
 •DERMATOLOGY CLINIC

BUSINESS & PROFESSIONAL DIRECTORY

ACCOUNTING

MAX KATHOL
 Certified Public Accountant
 104 West 2nd
 Wayne, Nebraska
 375-4718

PLUMBING

For all your plumbing needs contact:
JIM SPETHMAN
 375-4499
SPETHMAN PLUMBING
 WAYNE, NEBRASKA

CONSTRUCTION

OTTE CONSTRUCTION COMPANY
 •General Contractor
 •Commercial •Residential
 •Farm •Remodeling
 East Highway 35
 Wayne, NE 375-2180

REAL ESTATE

•Farm Sales •Home Sales
 •Farm Management
MIDWEST Land Co.
 206 Main-Wayne-375-3385

SERVICES

WHITE HORSE
 SHOE REPAIR & GAS STATION
 502 MAIN ST.
 WAYNE
 Leatherwork Shoe Repair
 Mens & Womens Needs
 Same Day Service
 Quality Work at Lowest Price!

FINANCIAL PLANNING

GEORGE PHELPS
 Certified Financial Planner
 416 Main Wayne 375-1848



THE PRUDENTIAL
 "Going Above & Beyond"
MATTHEW W. POLHAMUS
 220 WEST 7TH
 WAYNE, NE 68787 375-5616

New York Life Insurance Company

NEW YORK LIFE
 Jack L. Hausmann
 112 West 2nd.
 Wayne, NE 68787
 375-5414

INSURANCE

Independent Agent
DEPENDABLE INSURANCE
 for all your needs call:
375-2696
N.E. NEBRASKA INS. AGENCY
 Wayne 111 West 3rd

KEITH JECH INSURANCE AGENCY

IF THINGS GO WRONG, INSURANCE CAN HELP!
 316 Main 375-1429 Wayne

FIRST NATIONAL AGENCY

Gary Boehle
 Steve Muir
 303 MAIN
 WAYNE
 PHONE: 375-2511

State National Insurance Agency

Let us protect & service your insurance needs...
Minchaff Mail - Wayne
Marty Summerfield
 Work 375-4888 Home 375-1400

EMERGENCY.....911
POLICE.....375-2626
FIRE.....CALL 375-1122
HOSPITAL.....375-3800
CNTY SHERIFF..3751911

D & D PEST CONTROL & EXT.
 Dellis or Patsy Dimmick
 Rt. 1, Box 168
 Phone 605-565-3101 or 712-277-5148

ELLIS ELECTRIC ALLEN
 635-2300 or 635-2456

HEIKES AUTOMOTIVE SERVICE
 •Major & Minor Repairs
 •Automatic Trans. Repair
 •Radiator Repairs
 •24 Hour Wrecker Service
 •Goodyear Tires
 419 Main Street Wayne
 PHONE: 375-4385

MITCHELL ELECTRIC
 WAYNE
 375-3566

LUEDER'S G-MEN REFUSE SERVICE RESIDENTIAL PICKUP
\$11.00 a month CALL LARRY 375-3225
 Send Payments to **Box 275**
 Grass and/or leaves pickup must be scheduled for Mondays only. Contact Lueder's G-Men for special pickup.

COLLECTIONS •BANKS •MERCHANTS •DOCTORS •HOSPITALS RETURNED CHECKS ACCOUNTS
 Action Credit Corporation
 Wayne, NE 68787
 (402) 375-4609

HABROCK APPRAISAL SERVICE
 Rural & Residential Property Appraisals
 P.O. Box 133
 Emerson, NE 68733
 Phone: 402-695-2714
 JeanNor Habrock
 Nebraska Licensed Appraiser

If you are looking for a job in the beef packing industry, come to work for one of the safest in the industry. IBP, Inc. the world's largest processor of beef and a growing force in pork processing is currently conducting interviews for full and part-time production workers in our slaughter division. On the job training starting wage \$6.65 per hour with an opportunity to increase to \$9.35 per hour. Benefits include medical insurance, paid vacation, paid holidays, savings and retirement. Safety incentive programs. Candidates who feel qualified apply in person Monday through Friday, 8 a.m. to 4 p.m. Guaranteed 40 hour work week. E.O.E., M/F. Apply West Point, Nebraska.

FOOD SERVICE SUPERVISOR
 Apply In Person
 Pender Care Center, 200 Valley View Drive,
 Pender - 385-3072

CARRIER NEEDED
 FOR THE WAYNE HERALD & MARKETER
CALL 375-2600
 ASK FOR JENNIFER

WANTED
 WANT TO RENT: Responsible 27 year old male wants to rent reasonably priced, unfurnished one bedroom apartment. References available. Phone 454-2120. D33

Lordie Lordie Look Who's 40!
on the 4th.....D.M.

We Love You! R.C.W.J.

SPECIAL NOTICE
PUBLISHER'S NOTICE: All real estate advertised in this newspaper is subject to the Federal Fair Housing Act of 1968 which makes it illegal to advertise "any preference, limitation, or discrimination based on race, color, religion, sex, or national origin, or an intention to make any such preference, limitation, or discrimination." This newspaper will not knowingly accept any advertising for real estate which is in violation of the law. Our readers are informed that all dwellings advertised in this newspaper are available on an equal opportunity basis.

FOR SALE
 FOR SALE: Newer 3 bedroom house in Laurel, central air, attached garage. 710 Oak Street. Call 924-3101 or 256-3528. N2913

TO GIVE AWAY
 FREE PUPPIES. Loveable. Need a home. 375-3517. N2913

Memphis Belle
 They rode on the wings of victory.
 Nightly 7pm Fri Sat Tues 9pm
 Bargain Matinee Sun 2.00
 Bargain Night Tues 7:00 & 9:00

MR. DESTINY
JAMES MICHAEL BELUSHI CAINE
 would you give up anything for love?
 Starts Fri. Nightly 7:15 pm Late Fri Sat Tue 8:15
 Bargain Matinee Sun 2:15 Bargain Night Tues 7:15 & 9:15

FRANKER
 Holiday Matinee
 Matinee Saturday 2:00 pm

DENTIST
DR. GEORGE H. GOBLIRSCH, D.D.S.
 110 Main Street
 Wayne, Nebraska
 Phone 375-3200

PHARMACIST
WILL DAVIS, R.P.
 375-4249
SAV-MOR PHARMACY
 Phone 375-1444

WAYNE DENTAL CLINIC
S.P. BECKER, D.D.S.
 611 North Main Street
 Wayne, Nebraska
 Phone: 375-2889

PHYSICIANS
BENTHACK CLINIC
 Robert B. Benthack, M.D.
 Benjamin J. Martin, M.D.
 Gary J. West, P.A.C
 215 West 2nd Street
 Phone: 375-2500
 Wayne, Nebraska

OPTOMETRIST
WAYNE VISION CENTER
DR. DONALD E. KOEBER
 OPTOMETRIST
 313 Main St.
 Phone 375-2020 Wayne, NE

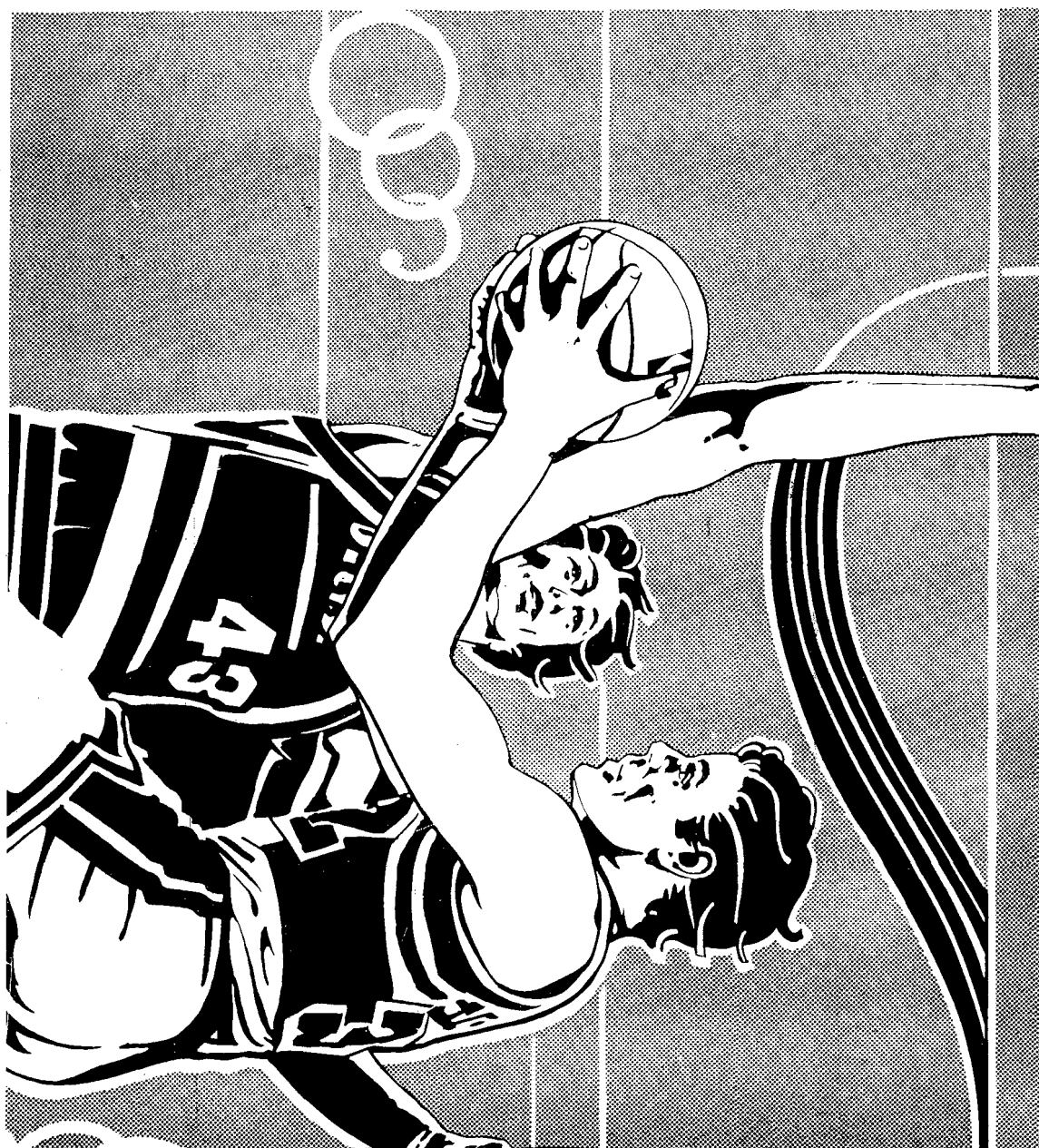
NORFOLK MEDICAL GROUP, P.C.
900 Norfolk Avenue 402 / 371-3160
Norfolk, Nebraska
 General Surgery: G.D. Adams, M.D., FACS; D.F. Hehner, M.D., FACS. Pediatrics: R.P. Votta, M.D., FAAP, D. Blomen Berg, M.D., FAAP; Family Practice: T.J. Biga, M.D.; L.G. Handke, M.D.; W.F. Becker, M.D., FAAP; F.D. Dozon, M.D. Internal Medicine: W.J. Lear, M.D., D. Dudley, M.D.; Psychiatry: V. Canganelli, M.D.
 Satellite Clinics - Pierce-Madison-Stanton

FAMILY VISION CENTER
Quality & Complete Vision Care
818 Ave. E
Wisner, Nebraska
529-3558

WAYNE FAMILY PRACTICE GROUP P.C.
 Willis L. Wiseman, M.D.
 James A. Lindau, M.D.
 Dave Felber, M.D.
 214 Pearl Street
 Wayne, NE 375-1600
 Hours: Monday-Friday 8-12 & 1:30-4:30, Saturday 8-12

MAGNUSON EYE CARE
Dr. Larry M. Magnuson
 Optometrist
 509 Dearborn Street
 Dearborn Mall
 Wayne, Nebraska 68787
 Telephone: 375-3160

SPORTS



WAYNE - CARROLL WINSIDE ALLEN LAUREL - CONCORD WAKEFIELD

WAYNE-CARROLL BOYS BASKETBALL



MEMBERS OF THE WAYNE Boys basketball team this season include from back row left to right: Craig Hudson, Ted Perry, Regg Carnes, Robert Bell, Mike Fluent, Craig Sharpe, Kyle Dahl, Brian Lentz, Matt Blomenkamp and Matt Ley. Front row: Randy Kaup, Matt Meyer, Chad Paysen, Chris Sweetland, Jack Swinney, Jeff Griesch, Bobby Barnes, John Murphy, and Brad Uhing. Missing is Aaron Wilson.

Wayne varsity looks at inexperience

The Wayne Blue Devil boys basketball team will return just two starters off last year's team which went 14-8. Gone from that team includes leading scorer Willy Gross and leading rebounder Neil Carnes along with Craig Dyer. Also gone from last year's team is Casey Dyer and Chad Metzler.

Jeff Griesch and Craig Sharpe will be the two starters who return to this year's line-up along with part time starter from last year in Kyle Dahl. Griesch and Sharpe are set to enter their senior seasons while Dahl is a Junior.

The rest of Wayne's varsity team this season is basically untested and head coach Bob Uhing will have to watch and see who develops into a starting role with the three already mentioned players.

"I'd say the number one key to our season this year will be to stay healthy," Uhing said. "We can not afford to battle injuries with the type of schedule we play."

The Blue Devils traditionally play one of the strongest schedules of any Class B School and this year is no exception as Wayne starts off the season with four road games against two teams that went to the state tournament a year ago, one Class A team and a traditional strong team in Battle Creek. Last season the Blue Devils played 12 teams that were rated in Class A, B and C.

"It will be very important for us to practice hard both mentally and physically while we are amidst our

road swing," Uhing said. "You can play a game physically but if you are not in the right frame of mind mentally, it doesn't do you any good."

Other players looking to possibly fill the starting rotation throughout the season include seniors Brian Lentz, Aaron Wilson and Martin Rump along with juniors Matt Ley and John Murphy. Sophomores Bobby Barnes, Regg Carnes and Brad Uhing will also look to be impact players despite their youth.

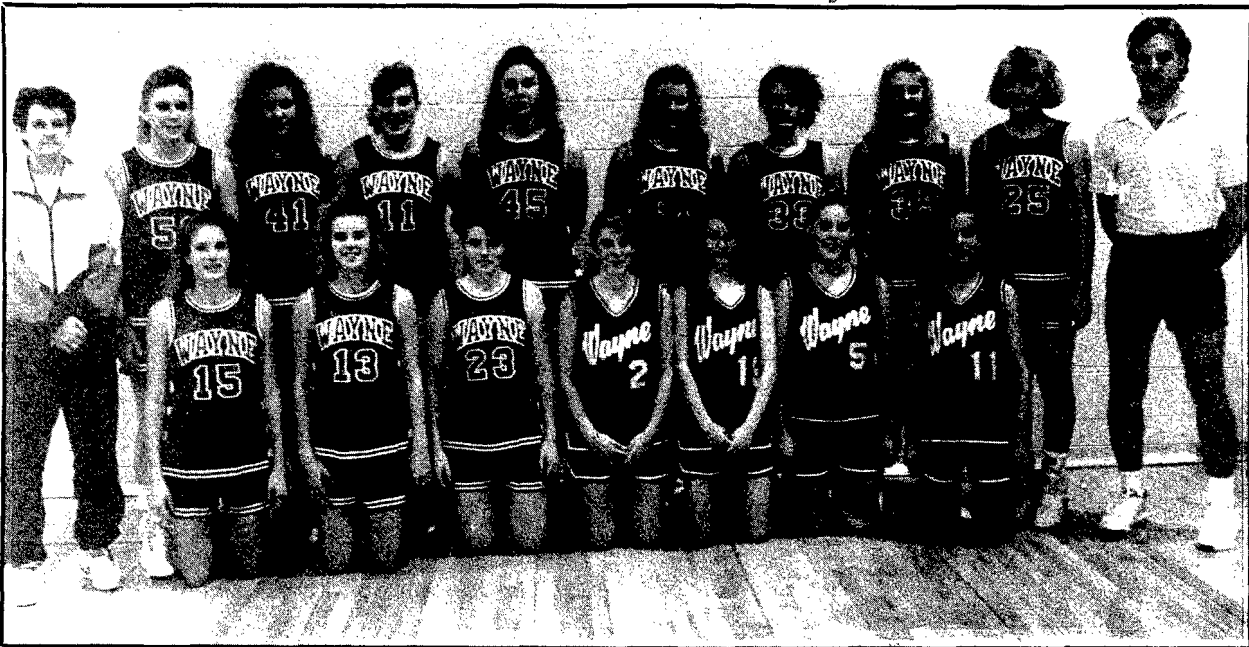
"Mental toughness and the confidence factor are what will be two keys to our season," Uhing said. "We need to be self motivated, to have the confidence to expect to win whether we are at home or on the road."

The following businesses support Wayne-Carroll Boys Basketball

- WAYNE AUTO PARTS
- SCHUMACHER
- FUNERAL HOMES
- Wayne • Carroll • Laurel • Winside
- WAYNE CARE CENTRE
- PAMIDA
- LOGAN VALLEY IMP. CO.
- FIRST NATIONAL BANK
- Member FDIC
- SAV-MOR PHARMACY
- WAYNE VISION CENTER
- STATE NATIONAL INSURANCE
- JONES INTERCABLE
- HARDEE'S
- MAGNUSON EYE CARE
- PAC 'N' SAVE
- TOM'S BODY SHOP

- STATE NATIONAL BANK
- Member FDIC
- FREDRICKSON OIL CO.
- STOLTENBERG PARTNERS
- ZACH OIL COMPANY
- JAMMER PHOTOGRAPHY
- FIRST NATIONAL AGENCY
- KAUP'S TV
- ARNIE'S FORD MERCURY
- ERA PROPERTY EXCHANGE
- ELLINGSON MOTORS
- MCBRIDE - WILTSE
- MORTUARY
- Wayne • Laurel • Winside
- OFFICE CONNECTION
- NORTHEAST NE. ROCKET
- KTCH
- WAYNE HERALD
- & MARKETER

- DOESCHER APPLIANCE
- QUALITY FOODS
- TWJ FEEDS, INC. CARROLL
- FARMER'S STATE BANK & INSURANCE AGENCY, Carroll, Member FDIC
- AMBER INN
- TERRA INT. INC.
- NORTHEAST NE. INSURANCE
- GREAT DANE TRAILERS
- DIAMOND CENTER
- CARHART LUMBER CO.
- RAINTREE
- DRIVE-IN LIQUOR
- WAYNE SPORTING GOODS
- THE HAIR STUDIO



MEMBERS OF THE Wayne Girls basketball team include from back row left to right: Head coach Marlene Uhing, Kim Kruse, Teresa Witkowski, Jennifer Hammer, Erin Pick, Amy Tiedtke, Liz Reeg, Susie Ensz, Jenny Thomsen and assistant coach Roger Reikofski. Front row: Danielle Nelson, Angie Thompson, Tara Erxleben, Sarah Hampton, April Huyck, Audra Sievers and Tami Schluns. Not pictured is Amy Wriedt.

Wayne girls seek balanced attack

The Wayne Lady Blue Devils lost just two starters off of a 6-15 season a year ago, but head coach Marlene Uhing is quick to point out that the two starters they lost accounted for 65 percent of Wayne's point production as well as the majority of the ball handling and rebounding chores.

The key losses being referred to are of course Teresa Ellis and Heidi Reeg. Also gone from last year's team is Kristen Frevert. Returning however, is seven letterwinners including seniors Jennifer Hammer, Amy Wriedt and Amy Tiedtke. Sophomores Erin Pick, Liz Reeg, Susie Ensz and Danielle Nelson also saw extensive playing time as freshman and with that first year experience under their belts, could be much improved.

"Right now I believe the key to our season could depend on whether or not we find some quality depth," Uhing said. Kim Kruse, Teresa Witkowski and Angie Thompson seem to be the top candidates right now who could fill that depth chart Uhing is referring to. All three are sophomores.

"I thought by the end of last year we were playing as good of basketball as we could," Uhing said. "We were in all of the games we played, we weren't getting beat badly."

Wayne's team a year ago recorded a school record for free throw percentage and they finished the season with the second highest field goal percentage of any Wayne girls team. "Those two stats tell me that when we took care of the ball we could

score but we had entirely too many turnovers," Uhing said.

Uhing feels that this year's team will have more balance. "Most of the kids really worked on ball handling in the off season," Uhing said. "We went to several camps both individual and team camps." Several of the Wayne girls traveled to the state of Indiana for a shooting camp which Uhing feels will benefit the Blue Devils.

"There are three keys to the success of our season," Uhing said. "We have to cut down on turnovers, develop some depth and gain confidence as well as balance. We can't just rely on one or two girls to do all our scoring. Everyone will have to contribute."

The following businesses support Wayne-Carroll Girls Basketball

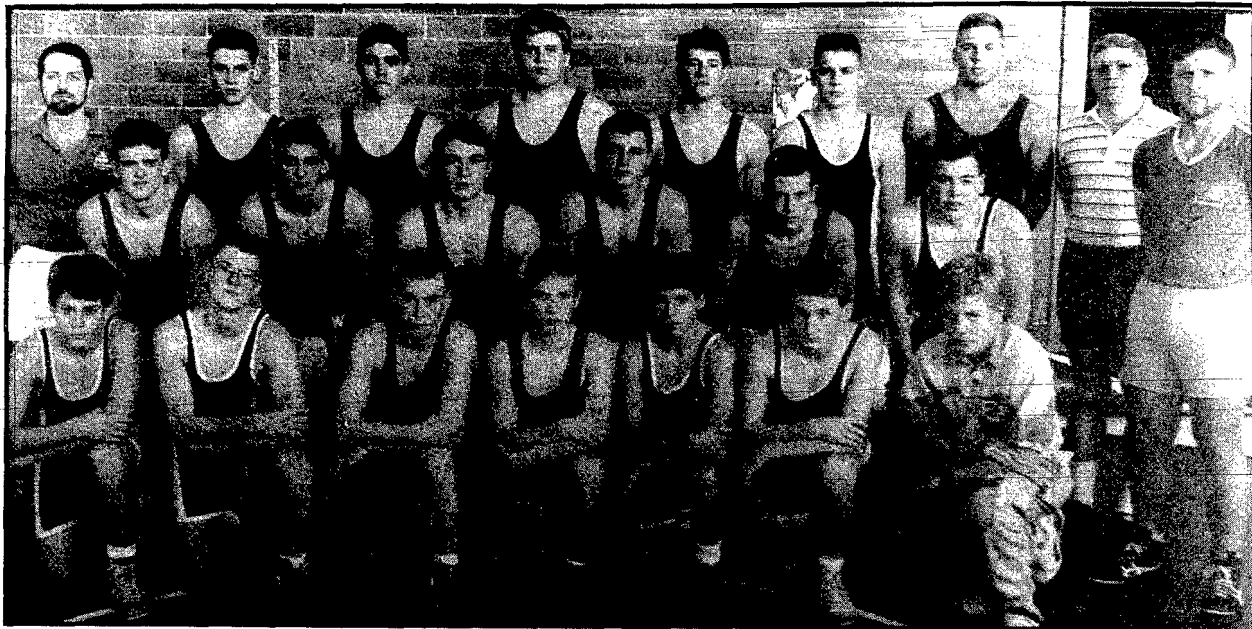
**WAYNE AUTO PARTS
SCHUMACHER
FUNERAL HOMES**
• Wayne • Carroll • Laurel • Winside
**WAYNE CARE CENTRE
PAMIDA
LOGAN VALLEY IMP. CO.
FIRST NATIONAL BANK
Member FDIC
SAV-MOR PHARMACY
WAYNE VISION CENTER
STATE NATIONAL INSURANCE
JONES INTERCABLE
HARDEE'S
MAGNUSON EYE CARE
PAC 'N' SAVE
TOM'S BODY SHOP**

**STATE NATIONAL BANK
Member FDIC
FREDRICKSON OIL CO.
STOLTENBERG PARTNERS
ZACH OIL COMPANY
JAMMER PHOTOGRAPHY
FIRST NATIONAL AGENCY
KAUP'S TV
ARNIE'S FORD MERCURY
ERA PROPERTY EXCHANGE
ELLINGSON MOTORS
MCBRIDE - WILTSE
MORTUARY
Wayne • Laurel • Winside
OFFICE CONNECTION
NORTHEAST NE. ROCKET
KTCH
WAYNE HERALD
& MARKETER**

**DOESCHER APPLIANCE
QUALITY FOODS
TWJ FEEDS, INC. CARROLL
FARMER'S STATE BANK &
INSURANCE AGENCY,
Carroll, Member FDIC
AMBER INN
TERRA INT. INC.
NORTHEAST NE.
INSURANCE
GREAT DANE TRAILERS
DIAMOND CENTER
CARHART LUMBER CO.
RAINTREE
DRIVE-IN LIQUOR
WAYNE SPORTING GOODS
THE HAIR STUDIO**

WAYNE-CARROLL GIRLS BASKETBALL

WAYNE-CARROLL WRESTLING



MEMBERS OF THE Wayne wrestling team this year include from back row left to right: Head coach John Murtaugh, Jesse Brodersen, Dave Hewitt, Matt Bruggeman, Cory Wieseler, Dwaine Junck, Jason Ehrhardt, assistant coaches Lonnie Ehrhardt and Aaron Schuett. Middle row: Jason Fink, Trevor Wehrer, Chris Janke, Mike DeNaeyer, Randy Johnson, Brian Gamble. Front row: Jason Shultheis, Matt Rise, Brent Gamble, Todd Fredrickson, Jason Wehrer, Terry Rutenbeck, and student manager Jeremy Sievers. Not pictured is Eric Cole.

Wayne matmen seek elite spot in 'B'

You would think that it would be a pretty tall order for the Wayne wrestling team duplicate the success they enjoyed last season—going 8-0 in duals, winning three tournaments, placing third at the district tournament and placing 14th at state with one state champion.

But Wayne wrestling coach John Murtaugh is far from pessimistic on how the Blue Devils are going to improve on those stats. "We are very excited about the coming season," Murtaugh said. "We have six wrestlers returning with state tournament experience and we have 13 overall letterwinners back. We have the makings to be a very good wrestling team."

The experienced Blue Devils will be led by return-

ing state champion Jason Ehrhardt at 189 lbs. Ehrhardt lost just one match last season and that came to the runner up 189 pounder in Class A.

Also returning to aid the senior dominant Blue Devils are state tournament qualifiers from last season in Mike DeNaeyer, Chris Janke, Brent Gamble, Jesse Brodersen and Matt Bruggeman.

Still seven others return following a letter season and all feel confident about improving on last year's performance and possibly pushing Wayne to the elite in Class B. Eric Cole, Trevor Wehrer, Cory Wieseler, Jason Fink, Dwaine Junck, Randy Johnson and Matt Rise will supply the needed experience along with the returning state qualifiers to heighten Wayne's chances.

"For the most part we will be a senior dominant team," Murtaugh said. "Obviously, we expect a lot of good things from them. Just as important will be how our underclassmen wrestle. If they can give us quality matches throughout the year, we should be tough."

Dave Hewitt, Brian Gamble, Todd Fredrickson will try to add depth to the Wayne program along with freshman Jason Shultheis, Terry Rutenbeck and Jason Wehrer.

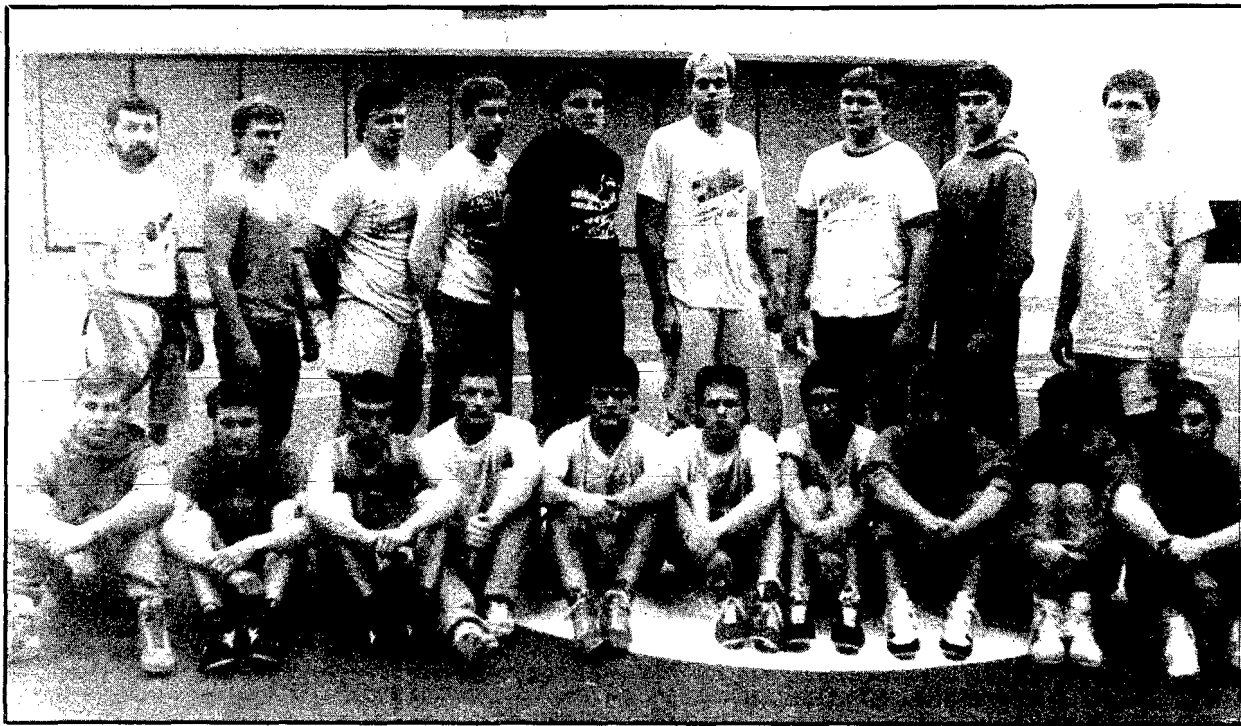
Wayne will have seven duals this season and they will participate in eight invitationals excluding districts and state. The Annual Wayne Invitational will be Saturday, Dec. 15 at Wayne State College's Recreation Center.

The following businesses support Wayne-Carroll Wrestling

**WAYNE AUTO PARTS
SCHUMACHER
FUNERAL HOMES**
• Wayne • Carroll • Laurel • Winside
**WAYNE CARE CENTRE
PAMIDA
LOGAN VALLEY IMP. CO.
FIRST NATIONAL BANK
Member FDIC
SAV-MOR PHARMACY
WAYNE VISION CENTER
STATE NATIONAL INSURANCE
JONES INTERCABLE
HARDEE'S
MAGNUSON EYE CARE
PAC 'N' SAVE
TOM'S BODY SHOP**

**STATE NATIONAL BANK
Member FDIC
FREDRICKSON OIL CO.
STOLTENBERG PARTNERS
ZACH OIL COMPANY
JAMMER PHOTOGRAPHY
FIRST NATIONAL AGENCY
KAUP'S TV
ARNIE'S FORD MERCURY
ERA PROPERTY EXCHANGE
ELLINGSON MOTORS
MCBRIDE - WILTSE
MORTUARY
Wayne • Laurel • Winside
OFFICE CONNECTION
NORTHEAST NE. ROCKET
KTCH
WAYNE HERALD
& MARKETER**

**DOESCHER APPLIANCE
QUALITY FOODS
TWJ FEEDS, INC. CARROLL
FARMER'S STATE BANK &
INSURANCE AGENCY,
Carroll, Member FDIC
AMBER INN
TERRA INT. INC.
NORTHEAST NE.
INSURANCE
GREAT DANE TRAILERS
DIAMOND CENTER
CARHART LUMBER CO.
RAINTREE
DRIVE-IN LIQUOR
WAYNE SPORTING GOODS
THE HAIR STUDIO**



MEMBERS OF THE Winside Wildcat wrestling team this season include from back row left to right: Head coach Paul Sok, Shane Frahm, Jason Krueger, Doug Heinemann, Brian Thompson, Craig Brugger, Trevor Topp, Jason Magwire and coach Dan Bowers. Front row: Chad Carlson, Jeff Carlson, Marc Janssen, Marc Stueckrath, Kerry Jaeger, Brady Frahm, Chris Mann, Kyle Fredrick, Jason Topp and Kurt Maler. Missing are Jeff Gallop, Jason Bargstadt, Don Nelson, Bob Holtgrew and Tim Prohoska.

Winside goal is to win state tourney

Winside wrestling coach Paul Sok is in a position this season that many coaches are only able to dream about. The Wildcats—runner-up finishers in Class D a year ago, return 10 state qualifiers, one state champion, four state placers and 12 letter winners.

To top it off the Wildcats are projected to win a state championship this season and for the first time in over 15 years the number of Winside grapplers out for the sport has grown to 22.

Heavyweight Brian Thompson returns for his senior season following a state championship and he has his eyes set on a repeat performance—much like Max Kant who was lost to graduation last spring. Kant in-

centidentally, is wrestling for the University of Nebraska this year as a freshman.

Chad Carlson will be seeking his fourth consecutive trip to Lincoln this year and the senior grappler will be looking for gold on this trip. Carlson already has a third, fourth and fifth place medal.

Shane Frahm and Jason Krueger will also be looking to repeat medal performances as both placed fourth a year ago. Trevor Topp placed sixth a year ago but has been slowed so far with a broken leg but is expected to return near Christmas.

Jeff Gallop, Jason Bargstadt, Jason McGuire, Chris Mann and Doug Heinemann got their first taste of state tournament action last year and all have expectations of returning this February.

Kerry Jaeger and Marc Janssen also lettered last season and both look to qualify for their first state tournament later this season. "We are a little slower at this point of the year than where I'd like to be," Sok said. "We are not as intense as we should be but the attitudes are good."

Sok says in order for his team to reach their ultimate goal—a state championship, they need to be more intense this year. "We got the most returning state points coming back," Sok said. "Mullen, who won Class D returns a couple state champions so obviously they will be strong. We also look for West Point Central Catholic, Bertrand and Oxford to contend for the state title."

The following businesses support Winside Wrestling

SCHUMACHER FUNERAL HOMES
• Wayne • Carroll • Laurel • Winside

WINSIDE STOP INN

FARMERS COOP
Pilger and Winside

WINSIDE STATE BANK
Member FDIC

WAYNE HERALD & MARKETER

LEE & ROSIE'S WINSIDE GRAIN & FEED
THIES HAY MOVING & BALING

WINSIDE ANIMAL CLINIC

WINSIDE ALFALFA DEHY, INC.
OBERLE'S MARKET

WINSIDE MOTOR CO. COMMERCIAL STATE BANK
Hoskins, Member FDIC
HOSKINS MFG. CO., INC.

HARTMANN CRANE SERVICE

BIG ERN'S PLACE
Hoskins
NORTHEAST NEBRASKA ROCKET

W
I
N
S
I
D
E

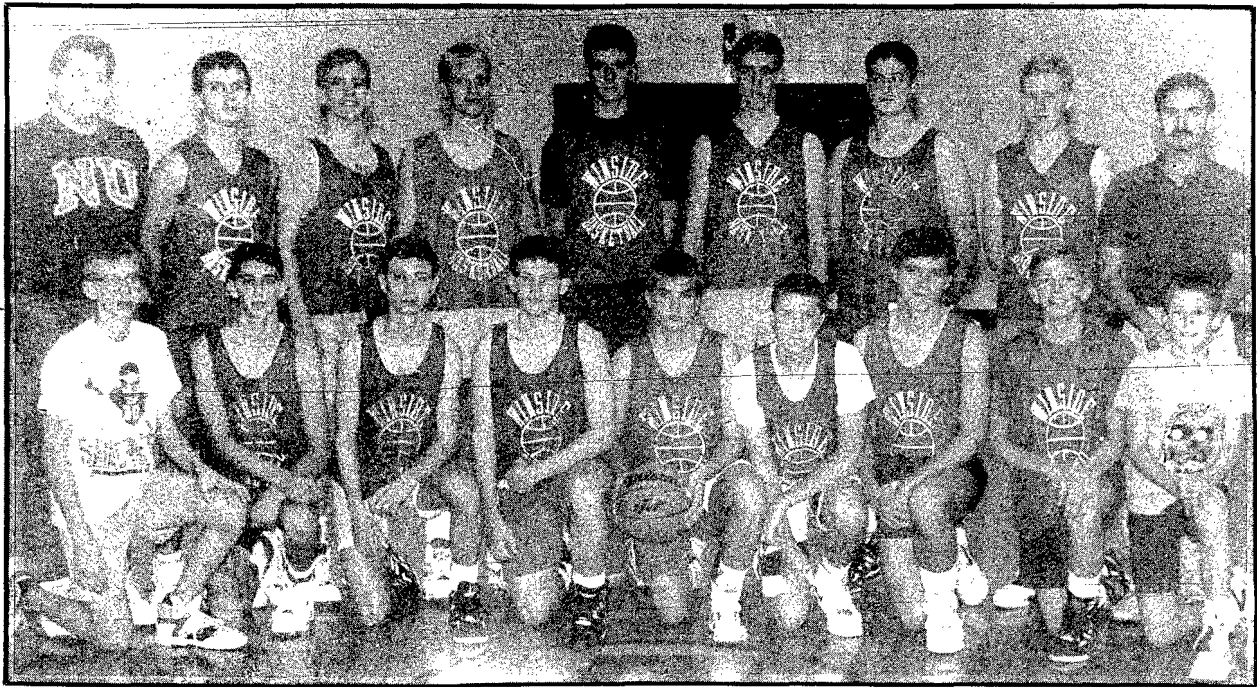
W
I
L
D
C
A
T
S

W
R
E
S
T
L
I
N
G

**W
I
N
S
I
D
E

B
O
Y
S

B
A
S
K
E
T
B
A
L
L**



MEMBERS OF THE WINSIDE Boys basketball team this season include from back row left to right: Assistant coach Brian Godden, Cory Jensen, Tad Behmer, Cam Shelton, Mark Brugger, Matt Brogren, Cory Miller, Ryan Brogren and head coach Randy Geier. Front row: student manager, Jeremy Jenkins, Jason Paulsen, John Hancock, Marty Jorgensen, Kurt Jaeger, Trevor Hartmann and Matt Behmer. Nelther student manager were identified.

Wildcat boys looking to end misfortune

The Winside Wildcats boys basketball team will be looking to improve upon an 0-16 season last year under the direction of head coach Randy Geier. "We suffered through a tough season last year," Geier said. "We are looking to play better this season."

Geier returns three starters off last year's team including Mark Brugger, Cory Jensen and Matt Brogren along with part time starter Tad Behmer. Also returning to the Wildcats line-up this season is junior Jason Paulsen and sophomore John Hancock who saw extensive playing time as a freshman.

Sophomore Cory Miller will also see some playing time this year according to Geier. "Practices have

gone very well to this point," Geier said. "The work ethic is good and the attitudes are very positive and I'm pleased about that because for the most part these are the same guys that were here last year and they know what they went through all season and yet they are back again."

One thing that will help the Wildcats this season that they didn't really enjoy last year is depth. "We have several on the team who have varsity experience," Geier said. "That's one thing that really hurt us last season when we had to replace everyone but one starter."

Geier also said the inside game looks pretty

strong with the likes of Mark Brugger and Matt Brogren. "There are three things that we have to concentrate on all season in order for us to have a better season," Geier said. "First we have to play overall better defense. Second, we must cut down on the number of turnovers we suffered a year ago and third, we have to shoot better from the perimeter so it takes pressure off of our inside game."

Geier points to Coleridge and Wakefield as having very good teams this season of which both are on the Wildcats schedule. Coleridge invades the Wildcat gym on Dec. 14 while Winside travels to Wakefield on Jan. 11.

The following businesses support Winside Boys Basketball

**SCHUMACHER
FUNERAL HOMES**
• Wayne • Carroll • Laurel • Winside

**WINSIDE STOP INN
FARMERS COOP**
Pliger and Winside

WINSIDE STATE BANK
Member FDIC

**WAYNE HERALD
& MARKETER**

**LEE & ROSIE'S
WINSIDE GRAIN & FEED**

**THIES HAY MOVING
& BALING**

WINSIDE ANIMAL CLINIC

**WINSIDE
ALFALFA DEHY, INC.**

OBERLE'S MARKET

**WINSIDE MOTOR CO.
COMMERCIAL
STATE BANK**
Hoskins, Member FDIC

HOSKINS MFG. CO., INC.

**HARTMANN
CRANE SERVICE**

BIG ERN'S PLACE
Hoskins

**NORTHEAST
NEBRASKA ROCKET**



MEMBERS OF THE WINSIDE girls basketball team this season include from back row left to right: Head coach Paul Giesselmann, Catherine Bussey, Holly Holdorf, Chris Colwell, Christi Mundil, Jean Severson, assistant coach Nancy Loterbour and Christi Thurstonson. Front row: Shannon Holdorf, Yolanda Slevers, Karl Pichler, Patty Oberle and Jenny Jacobsen. Not pictured are Kelly Pichler, Wendy Rabe, Jenny Wacker, Becky Appel, Jennie Hancock and Tawnya Krueger.

Winside gals return key experience

It will be hard for the Winside Wildcats girls basketball team to duplicate the success they enjoyed in volleyball after earning a state tournament berth but if anyone can do it, Paul Giesselmann's troops can because the top seven players for the Wildcat volleyball team are out for basketball.

Winside returns four starters off a team that won 11 games a year ago and yet they are still a very young team with just two seniors in Shannon Holdorf and Kelly Pichler.

Pichler along with scoring leader Jenny Jacobsen, Wendy Rabe and Holly Holdorf will return to their starting positions from a year ago and as for that fifth starting spot—freshman Christi Mundil is ex-

pected to fill that vacancy and Giesselmann feels that Mundil has the ability to be something special for the Wildcat program throughout the next four years.

Coming off the bench first will be another freshman who has the uncanny ability to take control of a situation despite her youth. Kari Pichler, who grew up in a big way in volleyball this year will attempt to carry over her success to the basketball hard court.

"I believe we will have a very quick team this year," Giesselmann said. "If things go the way as planned we should have a very solid inside-outside game with Wendy Rabe in the middle along with Christi Mundil and then Kelly Pichler and Jenny Ja-

cobsen with their shooting ability from the outside."

Giesselmann said that every time his Wildcats take the floor this year they expect to win the battle of the boards. "We feel that our success depends on our defense and quickness," Giesselmann said. "Our biggest concern right now is lack of depth but we hope to have that ironed out by Christmas."

Giesselmann noted that the attitudes have been very good in practice so far. "We have a winning attitude right now and I believe it's because of the success we enjoyed in volleyball."

Wakefield and Coleridge are two of the teams that Giesselmann expects to be among the strongest on the Wildcats schedule.

W
I
N
S
I
D
E

G
I
R
L
S

B
A
S
K
E
T
B
A
L
L

The following businesses support Winside Girls Basketball

**SCHUMACHER
FUNERAL HOMES**
• Wayne • Carroll • Laurel • Winside

**WINSIDE STOP INN
FARMERS COOP**
Pilger and Winside

WINSIDE STATE BANK
Member FDIC

**WAYNE HERALD
& MARKETER**

**LEE & ROSIE'S
WINSIDE GRAIN & FEED**

**THIES HAY MOVING
& BALING**

WINSIDE ANIMAL CLINIC

**WINSIDE
ALFALFA DEHY, INC.**

OBERLE'S MARKET

**WINSIDE MOTOR CO.
COMMERCIAL
STATE BANK**
Hoskins, Member FDIC

HOSKINS MFG. CO., INC.

**HARTMANN
CRANE SERVICE**

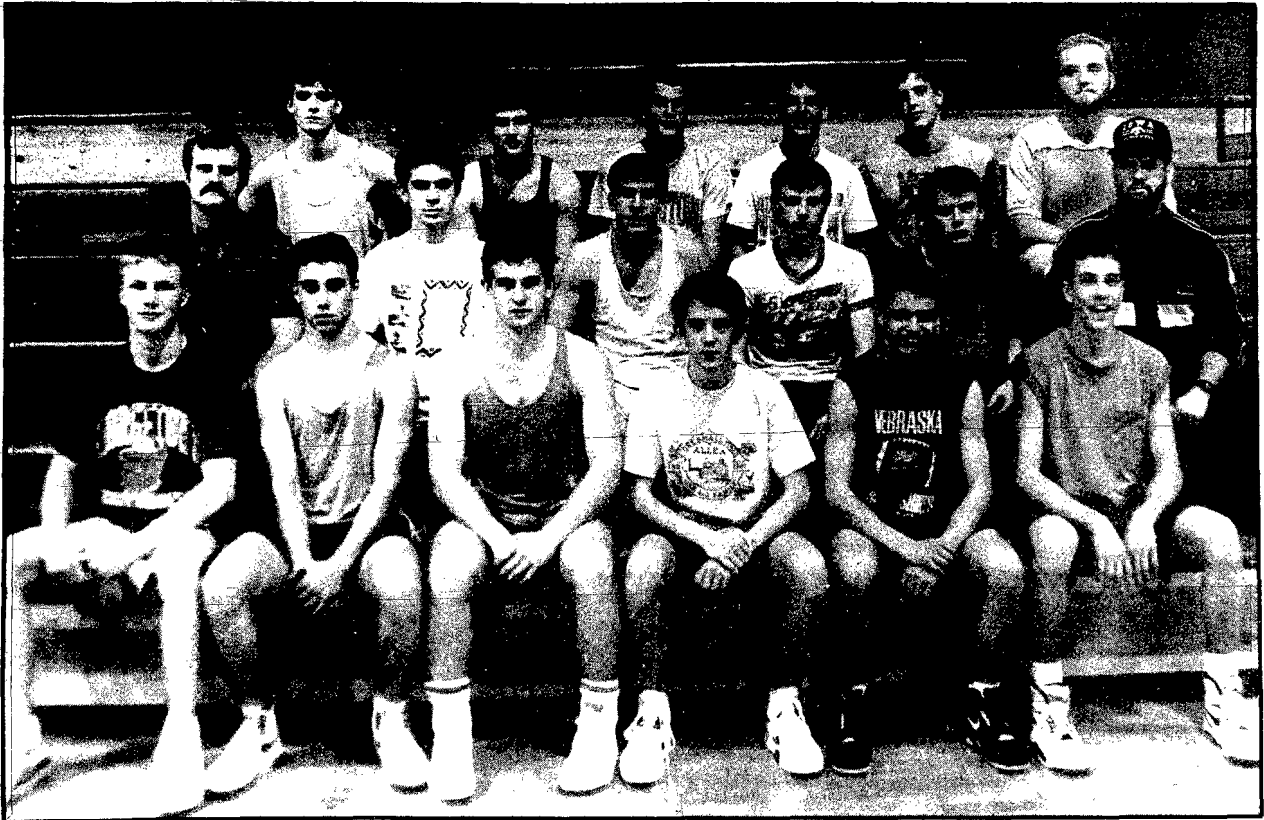
BIG ERN'S PLACE
Hoskins

**NORTHEAST
NEBRASKA ROCKET**

**A
L
L
E
N

B
O
Y
S

B
A
S
K
E
T
B
A
L
L**



MEMBERS OF THE ALLEN Boys basketball team this year include from back row left to right: Bradley Greenough, Shane Fiscus, Jody Martinson, Lane Anderson, Jay Jackson and Brian Anderson. Middle row: Assistant coach Dave Wamberg, Nick Xenitopoulos, Shane Dahl, Jason Reuter, Michael Sullivan, and head coach Jeff Schoning. Front row: Paul Brentlinger, Chris Sachau, Kevin Crosgrove, Jeff Gelger, Casey Schroeder, and Curtis Oswald.

Allen boys welcome new coach

The Allen Eagles boys basketball team will have a new face pacing the sidelines this year as Jeff Schoning takes over the helm from Gary Troth. Schoning brings with him five letterwinners off last year's team.

"We lost a lot of players off last year's team," Schoning said. "But we hope to get off on the right track and that might propel us to a successful season." Allen opens up the season in Winside in a girl/boy double header and Schoning feels that game is very important for his Eagles.

The only returning starter back this season is senior Shane Dahl. Jody Martinson also saw quite a bit of playing time last year and will be a starter this

season. Also looking to break the starting line-up is returning letterwinners Bradley Greenough, Paul Brentlinger, Chris Sachau and Kevin Crosgrove.

Allen will hopefully make the most out of its transfer student from Laurel in Brian Anderson. Freshman Curtis Oswald is also expected to make an impact on the Eagle program despite his youth.

Allen will perhaps need some time to get the new line-up after losing the likes of Matt Hingst, Todd Hohenstein, Kelly Boswell, Kent Chase, Rusty Dickens and Jason Oleson.

"Obviously when you lose a lot of players who all played a lot you are looking at a rebuilding year

some what," Schoning said. "But we have good quickness on this year's team even though we lack a lot of height."

Schoning hopes he can use the Eagle quickness to their advantage. "We should have a balanced scoring attack this year," Schoning said. "We will be looking to pressure the ball quite a bit and hopefully force some turnovers and get some easy baskets."

Allen will be using a seven to eight man rotation to keep people fresh, thus making the pressure game more of an asset to the Eagles. Schoning says he expects Coleridge and Newcastle to be among the strongest opponents his team faces this season.

The following businesses support Allen Boys Basketball

SECURITY STATE BANK
Member FDIC

ELLIS ELECTRIC

VILLAGE INN

NORTHEAST NE. ROCKET

**FARMER'S COOP
ELEVATOR CO.**

**WAYNE HERALD
& MARKETER**

CHASE PLUMBING



MEMBERS OF THE ALLEN Girls basketball team this season includes from back row left to right: Shelly Smith, Christy Philbrick, Steph Martinson, Steph Chase, Dawn Diediker, Kelli Smith. Middle row: Shawna Mae Hohenstein, Marcia Hansen, Bobbie Stingley, Sonya Plueger, Tammy Stewart, Renee Plueger. Front row: Assistant coach Gary Erwin, Heather Sachau, Carla Stapleton, Lisa Sullivan, Robin Schroeder, Cindy Chase, Denise Boyle and head coach Lori Koester.

Allen Eagles girls looking to improve

The Allen Lady Eagles will be looking to improve upon last season's two win year and according to second year head coach Lori Koester, her squad returns nearly everyone off that team which can only be a plus for her squad.

"We return quite a bit both in the way of starters and our bench," Koester said. "That first year of varsity experience that most of these girls got last year can only pay off for us this year."

Despite the experience that Koester returns this season the Eagles are still considered to be a young team with just two of the five letterwinners returning being seniors.

Leading scorer Cindy Chase will return for her ju-

nior season for the Eagles and she will be assisted by the top rebounder from last season in junior Denise Boyle. Other returning letterwinners include Robin Schroeder, Carla Stapleton and Heather Sachau.

"We will also be looking for Shawna Hohenstein, Sonya Plueger and Christy Philbrick to step in this year and do a good job for us," Koester said. "We also have a real nice group of freshman with Stephanie Chase bidding for a spot of the varsity."

One of the problems that the Eagles faced last season was a lack of height and Koester is the first one to admit that this year's team will have that same type of problem. "Once again our lack of height will cause some problems but we feel that our

quickness and defense will be our advantage."

Koester said that the girls are very excited about the season after enjoying success on the volleyball court and a state tournament trip. "Just having the volleyball team qualify for state has given our basketball team some confidence," Koester said. "Hopefully we can use that to our advantage."

Koester looks for Coleridge, Winside, Wakefield and Emerson-Hubbard to be very competitive teams that the Eagles must play. "Last year we averaged losing our games by seven points," Koester said. "We should be able to make up seven points a game strictly on experience."

The following businesses support Allen Girls Basketball

SECURITY STATE BANK
Member FDIC

ELLIS ELECTRIC

VILLAGE INN

NORTHEAST NE. ROCKET

**FARMER'S COOP
ELEVATOR CO.**

**WAYNE HERALD
& MARKETER**

CHASE PLUMBING

**L
A
U
R
E
L
-
C
O
N
C
O
R
D
B
O
Y
S
B
A
S
K
E
T
B
A
L
L**



The LAUREL BOYS basketball team this year will include from back row left to right: Coach Mark Hrabik, Matt Kessinger, Kelth Schutte, Andy Smith, Scott Taylor, Doug Olteman, Jon Ebmeler, Bruce Halsch, Dean Heydon, Justin Swanson, Kelth Anderson, Nick Strawn, Kevin Garvin and Brian Penne. Middle row: student managers Nick Dahl, Jesse Swanson, Derek Ehlers, Dustin Roberts, Phil Bloom, Kris Krie, Travis Monson, Jon Dybdal, P.J. Penne, Matt Ebmeler, Jason Kvols, Assistant coach Doug Manz and Tim Bloom. Front row: Ben Dahl, Randy Quist, Mark Stone, Josh Erwin, Ryan VanCleave, Chad Anderson, Bret Harder, Jason Stapelman, M.J. Hrabik, student manager.

Laurel boys face rebuilding season

As Laurel boys basketball coach Mark Hrabik enters his seventh year at the helm of the Bears basketball program he looks at a season of adjustments as Laurel prepares for life without the likes of John Schutte, Troy Twohig, Todd Erwin, Shawn Arens, Matt Jonas, Chad VanCleave and Matt Felber—the top seven players off a team that enjoyed success last season.

"We pretty much lost everyone that had an impact on our team last year," Hrabik said. "You just can't lose a bunch like that and have things keep clicking like they were so it will be kind of a year of adjustments."

A lot of inexperience will inhabit the Laurel line-up and leadership will play a key role in the Bears success. Six seniors get set to enter their final year of eligibility in Bruce Halsch, Dean Heydon, Brian Penne, Justin Swanson and John Ebmeler.

All of these guys played a lot of junior varsity ball a year ago and they enjoyed some success in a 10-5 season," Hrabik said. "Realistically, I believe that we will be extremely competitive and that should get us above the .500 barrier. After that it depends on breaks and if someone really steps up. We have the potential to do that despite our inexperience but we just have to wait and see."

Hrabik feels that he has eight players that have a lot of playing time capability but he hasn't named a starting line-up as of yet and he feels that the line-up could very well change from game to game.

As far as the schedule goes, Hrabik noted that there are several teams that will be very competitive this season starting with the NENAC portion of the schedule in Randolph and Neligh-Oakdale.

"Both Randolph and Neligh will be very strong teams this year," Hrabik said. "We also feel that despite the losses at Wakefield that Paul Eaton will field another strong team."

The following businesses support Laurel-Concord Boys Basketball

**SCHUMACHER
FUNERAL HOME**

• Wayne • Carroll • Laurel • Winside

**SECURITY NATIONAL BANK
& INSURANCE**
Member FDIC

THE CORNER MART

URWILLER

OIL & FERTILIZER

GADE'S FOOD CENTER

LAUREL WELDING

**WAYNE HERALD
& MARKETER**

**S & S
INSURANCE AGENCY**

DR. LEE DAHL, D.D.S.

LAUREL LOCKERS

NORTH SIDE GRAIN

DIXON ELEVATOR

LAUREL FEED & GRAIN



MEMBERS OF THE Laurel girls basketball team this season include from back row left to right: Head coach Mike Zimmerman, LeAnn Stewart, Kristy Stark, Karl Kraemer, Mandy Hartung, Stacy Nixon, Courtney Thomas, Brandi Mathiason, Betsy Adkins, Amy Peters, Samantha Felber and assistant coach Mike Kennedy. Front row: Donna Hangman, Tina Granquist, Bree Bebee, Sherri Hangman, Colleen Kavanaugh and Tara Erwin.

Lady Bears aim to fare well this year

Laurel girls basketball coach Mike Zimmerman enters his second season at the helm of the Lady Bears and although he lost four starters from last year's 8-12 record he is very optimistic about the Bears success this year.

"We have five of our top nine players back this year and even though we lost four starters we still have some quality experience returning," Zimmerman said. "Bree Bebee, Sherri Hangman, Amy Peters and Tina Granquist return to lead the Bears along with help from Betsy Adkins, Brandi Mathiason, Courtney Thomas and Stacy Nixon."

One of the more positive things that Zimmerman believes will lead Laurel to a possible winning record

this season is the success his junior varsity team achieved last year. "We had a 13-4 season on the junior varsity team," Zimmerman said. "Granted that is not varsity but the girls know how to win and they know what it takes to get the job done."

Of those four losses suffered by the reserves last year, two came at the beginning of the year by four and six points while the other two were one point losses later in the year.

"If last season's junior varsity success transfers to this year's varsity and we build on it, we could have a fine year," Zimmerman said. Sherri Hangman is the returning leading scorer for the Bears but Zimmerman is quick to point out that this year's Bears team

may be well balanced.

"Hangman is our leading returning scorer but we also have Amy Peters who was our leading junior varsity scorer and Betsy Adkins who was close to Peters in the scoring race on the reserve team."

Tina Granquist and Bree Bebee split time last year as point guards for the Bears so they return plenty of experience at that spot. "Overall, we are a younger team than last year but we have the makings to be a better team," Zimmerman said.

Zimmerman notes that Crofton, Pierce and Bloomfield will be among the strongest teams his Bears must play.

LAUREL-CONCORD GIRLS BASKETBALL

The following businesses support Laurel-Concord Girls Basketball

**SCHUMACHER
FUNERAL HOME**

• Wayne • Carroll • Laurel • Winside

**SECURITY NATIONAL BANK
& INSURANCE**
Member FDIC

**THE CORNER MART
URWILLER**

OIL & FERTILIZER

GADE'S FOOD CENTER

LAUREL WELDING

**WAYNE HERALD
& MARKETER**

**S & S
INSURANCE AGENCY**

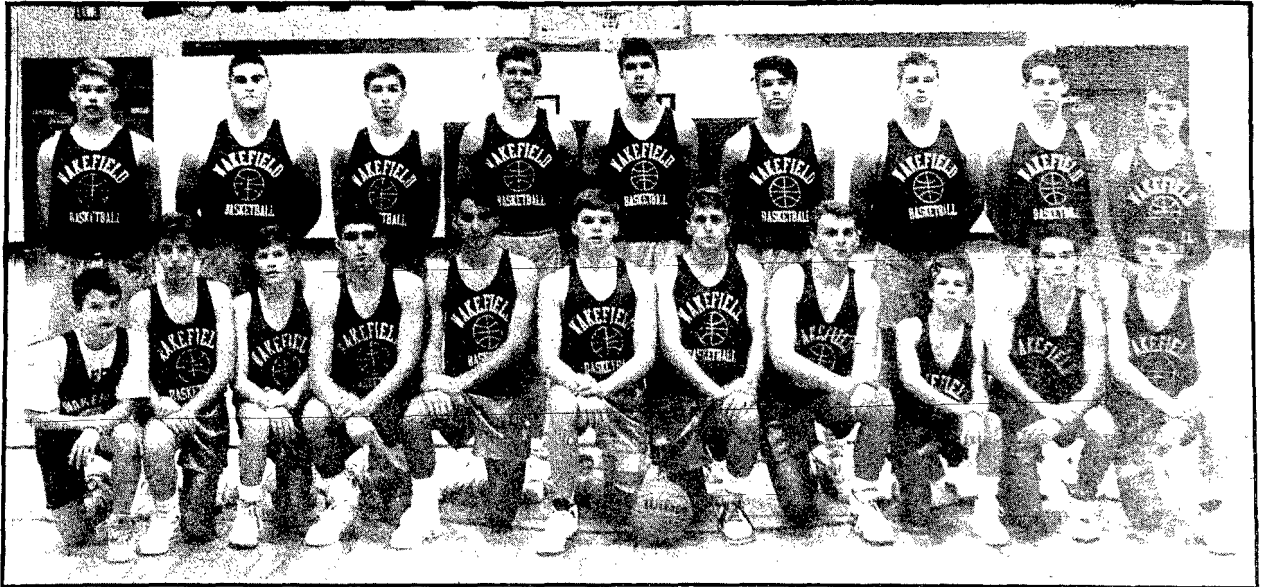
DR. LEE DAHL, D.D.S.

LAUREL LOCKERS

NORTH SIDE GRAIN

DIXON ELEVATOR

LAUREL FEED & GRAIN



MEMBERS OF THE Wakefield boys basketball team this season include from back row left to right: Jon Johnson, Doug Stanton, Matt Krusemark, Brett Oetken, Keith Wenstrand, Larry Johnson, Dalton Rhodes, Rod Greve and Cody Skinner. Front row: Justin Dutch, Cory Witt, Brook Lundahl, Brad Nuernberger, Marcus Tappe, Steve Clark, Anthony Brown, Ben Dutton, Brian Johnson, Jim Bensen and Mlah Johnson. Not pictured is Jared Dutton, Jeff Jepson and T.J. Preston.

Trojans must replace five starters

The Wakefield Trojans boys basketball team will be looking to replace several players off last years team which enjoyed a very fine year in qualifying for the state tournament and losing in the semi-finals to the eventual state champion Bridgeport.

Gone from last years team include Chris Loofe, Mark Johnson, Matt Tappe, Tony Krusemark, Andy McQuistan and Shawn Meyer. The Trojans do return three players who played quite a bit on the varsity level in Keith Wenstrand, who started the final three games last season when Andy McQuistan went down with a knee injury.

You might say however that Wenstrand is a big game performer as he butted heads with the best of Hartington Cedar Catholic, Wood River and Bridge-

port last season and he came away 2-1.

Anthony Brown returns for his junior season as a Trojan and Brown will be the prolific scoring threat for head coach Paul Eaton. Brown's athletic ability net him over 1000 yards rushing during the football season and he hopes his success continues on the hard court.

Long range shooting specialist Matt Krusemark also returns for his senior season. Krusemark blistered the nets last year from the three point range and will be looking to do so on a full time basis this season.

Other seniors on this years Wakefield team that will be looking to make a positive impact include Doug Stanton, Rod Greve, Jon Johnson and Steve Clark. All of these players played on the junior varsity team last year that did not lose a game.

"We've really worked hard in practice so far," Eaton said. "The biggest thing we lack right now is varsity experience." The Trojans however, may be aided by three transfer players in Jim Bensen from Pender and Jared and Ben Dutton from Lake Mills, Wisconsin.

"Jared Dutton and Jim Bensen are seniors and Ben Dutton is a sophomore," Eaton said. "They have been slowed by injuries so far but if they get healthy they could help us."

Wakefield also acquires the services of 6-3 junior forward Brent Oetken who did not play last season. "We should be alright after we get some experience," Eaton said. "We start off against two very strong teams in Pender and Bancroft."

The following businesses support Wakefield Boys Basketball

BENNE'S PACKAGE LIQUOR
SCHROEDER AGRI BUSINESS INC.
DIRTY HARRY'S
WAKEFIELD CLEANERS
IVADELL BURCHAM REAL ESTATE
ANDERSON LUMBER CO.
DR. PAUL V. BYERS D.D.S.
FAIR STORE
WISNER FARM SERVICE,
Wakefield

KRATKE OIL CO.
NIXON AUCTIONEERS
SALMON WELL CO.
WAKEFIELD DRUG
WAKEFIELD NATIONAL BANK
Member FDIC
MILTON G. WALDBAUM & CO.
WAYNE HERALD & MARKETER
FIRST EDITION BEAUTY SALON
KORNER MART



MEMBERS OF THE Wakefield girls basketball team this season include from back row left to right: Head coach Gregg Cruickshank, Lisa Anderson, Kristen Miller, Megan Sandahl, Wendy Kratke, Heidi Muller, Sarah Salmon, Lisa Blecke, Krista Demke and Angi Peterson. Front row: Richelle Wookman, Mellssa Wirth, Valerie Fischer, Kall Baker, Kathy Otte, Cindy Torczon, Billie Birkley, Marla Eaton, and Wendy Ulrich. Managers are Corina Kruger, Tiffany Gilliland, Wendy Lubberstedt, Mary Torczon. Not pictured is Dawn Belt, Tina Jacobsen, Melissa Haglund and assistant coach Lori Utemark.

Cruickshank gets nod for Lady Trojans

There will be a familiar face pacing the sidelines of the Wakefield girls basketball team this season but he will be in an unfamiliar spot. Gregg Cruickshank will take over the reigns as head coach of the Lady Trojans for Ellie Studer who resigned after last season.

Cruickshank had been the assistant coach the past two seasons before being elevated to the head coaching position and he looks at a very promising situation in this his first year at the helm.

The Trojans return four starters and a fifth part time starter. Leading scorer Lisa Blecke returns for her junior season to lead the Trojans while outside shooting specialists Kristen Miller and Lisa Anderson return to the starting line-up for their junior seasons as well.

Wendy Kratke will return to her starting position and part time starter Sarah Salmon will look to break into the starting rotation on a full time basis as well. "We are in a good situation in that five of our top seven players from last year are back," Cruickshank said. "These girls feel that they are the ones who can turn the Wakefield girls basketball program around to be as respectable as the volleyball team."

Also returning to help the Trojans this year is letterwinner Heidi Muller. "The girls really came into winter practice with a super attitude and good work ethic," Cruickshank. "The leadership ability of our returning letterwinners has rubbed off on the younger players and I'm very pleased so far."

Cruickshank's major concern at this point is the lack of depth he faces early in the season. "We feel really good about our top five returnees," Cruickshank said. "Right now we are concentrating our efforts on finding two to three girls who can spell our starters for a couple minutes at a time."

Right now there are seven girls who will be looking to fill what Cruickshank is looking for in depth and they include Heidi Muller, Angie Peterson, Cindy Torczon, Megan Sandahl, Maria Eaton, Kali Baker and Cathy Otte.

Cruickshank feels that Emerson-Hubbard, Winside and Coleridge will be among the most competitive teams his squad will face.

The following businesses support Wakefield Girls Basketball

SCHROEDER AGRI BUSINESS INC.

DIRTY HARRY'S

WAKEFIELD CLEANERS

IVADELL BURCHAM REAL ESTATE

ANDERSON LUMBER CO.

DR. PAUL V. BYERS D.D.S.

FAIR STORE

**WISNER FARM SERVICE,
Wakefield**

KRATKE OIL CO.

NIXON AUCTIONEERS

SALMON WELL CO.

WAKEFIELD DRUG

**WAKEFIELD NATIONAL BANK
Member FDIC**

MILTON G. WALDBAUM & CO.

WAYNE HERALD & MARKETER

FIRST EDITION BEAUTY SALON

KORNER MART

SCHEDULES

WAYNE BOYS BASKETBALL

Nov. 30, 6:30 p.m. — at Battle Creek
 Dec. 8, 6:15 p.m. — at So. Sloux City
 Dec. 11, 5 p.m. — at Schuyler
 Dec. 14, 5:15 p.m. — at Wisner-Pilger
 Dec. 15, 6:15 p.m. — O'Neill
 Dec. 27-28-29 — WSC Holiday
 Tourney
 Jan. 5, 6:15 p.m. — Columbus
 Lakeview
 Jan. 8, 6:30 p.m. — at Laurel
 Jan. 11, 6:15 p.m. — Stanton
 Jan. 12, 6:15 p.m. — Seward
 Jan. 18, 5 p.m. — Hartington C.C.
 Jan. 25, 5 p.m. — West Point
 Jan. 26, 6:15 p.m. — at Pender
 Jan. 31-Feb. 2 — NAC at Wayne
 Feb. 8, 5 p.m. — at Madison
 Feb. 15, 6:15 p.m. — at Pierce
 Feb. 16, 6:15 p.m. — Creighton

WAYNE

GIRLS BASKETBALL

Dec. 1, 6:15 p.m. — Pierce
 Dec. 6, 6:15 p.m. — Battle Creek
 Dec. 13, 6:15 p.m. — at West Point
 Dec. 14, 4 p.m. — Wisner
 Dec. 18, 6:30 p.m. — at Randolph
 Dec. 27-28-29 — WSC Holiday
 Tourney
 Jan. 3, 6:15 p.m. — Laurel
 Jan. 5, 2 p.m. — Sloux City West
 Jan. 8, 6:15 p.m. — Norfolk
 Jan. 10, 6:15 p.m. — South Sloux City
 Jan. 19, 3:15 p.m. — at O'Neill
 Jan. 22, 6:15 p.m. — at Pender
 Jan. 24, 6:30 p.m. — at Hartington CC
 Jan. 31-Feb. 2 — NAC at Wayne
 Feb. 5, 6:30 p.m. — at Stanton
 Feb. 7, 6:15 p.m. — at Emerson-Hubbard
 Feb. 14, 6:15 p.m. — Schuyler

WAYNE WRESTLING

Nov. 29, 7 p.m. — Schuyler
 Dec. 1 — at Blair Invitational
 Dec. 4, 7 p.m. — at West Point
 Dec. 8, 11 a.m. — at Stanton Invite
 Dec. 8, 10 a.m. — at West Point
 Invite
 Dec. 11, 6:30 p.m. — Norfolk
 9th-10th
 Dec. 13, 7 p.m. — South Sloux City
 Dec. 15, 10 a.m. — Wayne Invite
 Dec. 18, 6:30 p.m. — Albion
 Jan. 3, 7 p.m. — at Creighton
 Jan. 5, 10:15 a.m. — at Wisner-Pilger
 Invitational
 Jan. 12, 10 a.m. — at Elkhorn Invite
 Jan. 12 — Pender Invite 9th-10th
 Jan. 17, 7 p.m. — at Wisner-Pilger
 Jan. 19, 9:30 a.m. — at Plattsmouth
 Invite
 Jan. 24, 7 p.m. — Pender
 Jan. 26, 10 a.m. — at Albion Invite
 Jan. 29, 7 p.m. — at Columbus
 Lakeview

ALLEN BOYS BASKETBALL

Nov. 29 — at Winside
 Nov. 30 — Coleridge
 Dec. 7 — at Ponca
 Dec. 11 — Hartington
 Dec. 14 — Newcastle
 Dec. 18 — at Homer
 Dec. 20 — Wausa
 Jan. 4-5 — Ponca Tournament
 Jan. 11 — at Bancroft-Rosalie
 Jan. 14 — at Winnebago
 Jan. 18 — Walthill
 Jan. 25 — Emerson-Hubbard
 Jan. 28-Feb. 2 — Conf. Tourney
 Feb. 8 — Beemer
 Feb. 15 — at Wynot

ALLEN GIRLS BASKETBALL

Nov. 29 — at Winside
 Dec. 6 — at Ponca
 Dec. 11 — Hartington
 Dec. 13 — Newcastle
 Dec. 18 — at Homer
 Dec. 20 — Wausa
 Jan. 3-5 — at Ponca Tournament
 Jan. 8 — Bancroft at Rosalie
 Jan. 15 — Wynot
 Jan. 18 — Walthill
 Jan. 22 — at Coleridge
 Jan. 24 — Emerson-Hubbard
 Jan. 26-Feb. 2 — Conf. Tournament
 Feb. 5 — at Wakefield
 Feb. 7 — Beemer

WAKEFIELD

BOYS BASKETBALL

Nov. 29 — at Pender
 Nov. 30 — at Bancroft
 Dec. 7 — at Wausa
 Dec. 14 — Hartington
 Dec. 18 — at Osmond
 Dec. 27-29 — WSC Holiday
 Tournament
 Jan. 3-5 — Post Holiday Tournament
 Jan. 8 — Walthill
 Jan. 11 — Winside
 Jan. 15 — Emerson
 Jan. 18 — at Wynot
 Jan. 22 — at Ponca
 Jan. 25 — Laurel
 Jan. 26-Feb. 2 — Lewis & Clark
 Tournament
 Feb. 8 — Coleridge
 Feb. 11 — Lyons
 Feb. 15 — at Homer

WAKEFIELD

GIRLS BASKETBALL

Nov. 29 — at Pender
 Dec. 3 — Homer
 Dec. 7 — at Wausa
 Dec. 10 — at Emerson
 Dec. 14 — Hartington
 Dec. 18 — at Osmond
 Dec. 27-29 — WSC Holiday
 Tournament
 Jan. 3-5 — Post Holiday Tournament
 Jan. 8 — Walthill
 Jan. 11 — Winside
 Jan. 14 — at Ponca
 Jan. 18 — at Wynot
 Jan. 24 — at Laurel
 Jan. 26-Feb. 2 — Lewis & Clark
 Tournament
 Feb. 5 — Allen
 Feb. 7 — Coleridge

LAUREL-CONCORD

BOYS BASKETBALL

Nov. 30 — at Crofton
 Dec. 4 — Winside
 Dec. 7 — Randolph
 Dec. 11 — Osmond
 Dec. 14 — at Plainview
 Dec. 27-28 — Holiday Tourney
 Jan. 4 — at Pierce
 Jan. 8 — Wayne
 Jan. 11 — at Creighton
 Jan. 15 — Hartington
 Jan. 18 — at Bloomfield
 Jan. 22 — Homer
 Jan. 25 — at Wakefield
 Jan. 26 — NENAC Tournament
 Jan. 26 — at Randolph
 Jan. 29 — at Plainview
 Jan. 31 — NENAC Finals
 Feb. 4 — Coleridge
 Feb. 8 — Neligh
 Feb. 15 — Wausa



LAUREL-CONCORD GIRLS BASKETBALL

Nov. 29 — Coleridge
 Nov. 30 — at Crofton
 Dec. 4 — Winside
 Dec. 7 — Randolph
 Dec. 10 — at Ponca
 Dec. 14 — at Plainview
 Dec. 27-28 — Holiday Tourney
 Jan. 3 — at Wayne
 Jan. 4 — at Pierce
 Jan. 11 — at Creighton
 Jan. 15 — Hartington
 Jan. 18 — at Bloomfield
 Jan. 24 — at Wakefield
 Jan. 26 — NENAC Tournament
 Jan. 28 — at Plainview
 Jan. 31 — NENAC Finals
 Feb. 7 — Wausa
 Feb. 8 — Neligh

WINSIDE

BOYS BASKETBALL

Nov. 29 — Allen
 Nov. 30 — Homer
 Dec. 4 — at Laurel
 Dec. 11 — at Bancroft
 Dec. 14 — Coleridge
 Dec. 18 — at Wynot
 Dec. 20 — Walthill
 Jan. 3 — Beemer
 Jan. 11 — at Wakefield
 Jan. 18 — Wausa
 Jan. 24 — Hartington
 Jan. 28-Feb. 2 — Conf. Tourn.
 Feb. 5 — Wynot
 Feb. 7 — at Osmond
 Feb. 15 — at Newcastle

WINSIDE

GIRLS BASKETBALL

Nov. 29 — Allen
 Dec. 4 — at Laurel
 Dec. 6 — Newcastle
 Dec. 11 — at Bancroft
 Dec. 14 — Coleridge
 Dec. 18 — at Wynot
 Dec. 20 — Walthill
 Jan. 4 — at Beemer
 Jan. 11 — at Wakefield
 Jan. 15 — Homer
 Jan. 18 — Wausa
 Jan. 24 — Hartington
 Jan. 26-Feb. 2 — Conf. Tourn.
 Feb. 5 — Wynot
 Feb. 7 — at Osmond

WINSIDE WRESTLING

Dec. 1 — at Creighton Tourney
 Dec. 6 — at Pender Double Dual
 Dec. 8 — at North Bend Tourney
 Dec. 15 — at Wayne Tourney
 Jan. 5 — Winside Tourney
 Jan. 10 — Howells-Stanton
 Double Dual
 Jan. 12 — at Battle Creek Tourney
 Jan. 15 — at Osmond Double Dual
 Jan. 19 — at Oakland-Craig Tourney
 Jan. 26 — at Greeley Tourney
 Feb. 2 — at Clearwater Tourney

WAYNE STATE COLLEGE MEN'S BASKETBALL

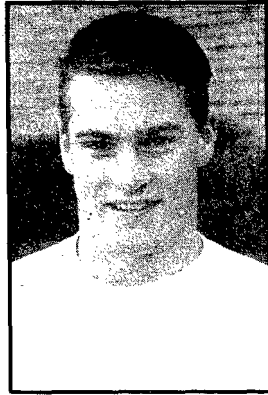
Nov. 17, 7:30 p.m. — Briar Cliff
 Nov. 23-24, 6:30 p.m. — at
 Southwest Minn. Tourney
 Nov. 27, 8 p.m. — at Morningside
 Nov. 30-Dec. 1, 6:30 p.m. — at
 Southwest Baptist Tourney
 Dec. 3, 7:30 p.m. — at Mo. Western
 Dec. 7, 7:30 p.m. — Chadron State
 Dec. 8, 7:30 p.m. — South Dakota
 Tech
 Dec. 11, 7:30 p.m. — North Dakota
 State
 Dec. 15, 7:30 p.m. — at Northwest
 Missouri
 Jan. 4, 8 p.m. — at Fort Lewis
 Jan. 5, 8 p.m. — at Adams State
 Jan. 10, 7:30 p.m. — Western State
 Jan. 12, 2 p.m. — Colorado Mines
 Jan. 13, 4 p.m. — Mesa State
 Jan. 18, 7:30 p.m. — Fort Hays State
 Jan. 24, 8 p.m. — at Western State
 Jan. 25, 8 p.m. — at Mesa State
 Jan. 27, 4 p.m. — at Colorado Mines
 Feb. 1, 7:30 p.m. — Fort Lewis
 Feb. 2, 7:30 p.m. — Adams State
 Feb. 8, 8 p.m. — at Fort Hays State
 Feb. 9, 7:30 p.m. — at Kearney
 State
 Feb. 13, 7:30 p.m. — at Briar Cliff
 Feb. 16, 7:30 p.m. — at Chadron
 State
 March 1, 7:30 p.m. — Kearney State

WAYNE STATE COLLEGE WOMEN'S BASKETBALL

Nov. 16 — at South Dakota State
 Nov. 17 — at South Dakota State
 Tourney
 Nov. 20, 5:30 p.m. — at University
 South Dakota
 Nov. 27, 6 p.m. — at Morningside
 Nov. 30, 5:30 p.m. — at Dakota
 Wesleyan
 Dec. 1, 7 p.m. — Simpson
 Dec. 4, 7 p.m. — Midland
 Dec. 7, 5:30 p.m. — Chadron State
 Dec. 12, 7 p.m. — University South
 Dakota
 Dec. 14, 7 p.m. — Briar Cliff
 Dec. 15, 6 p.m. — Mankato State
 Jan. 4, 6 p.m. — at Fort Lewis
 Jan. 5, 6 p.m. — at Adams State
 Jan. 10, 5:30 p.m. — Western State
 Jan. 13, 2 p.m. — Mesa State
 Jan. 15, 7 p.m. — at Nebraska
 Wesleyan
 Jan. 18, 5:30 p.m. — Fort Hays State
 Jan. 19, 5:30 p.m. — Kearney State
 Jan. 24, 7 p.m. — at Western State
 Jan. 24, 6 p.m. — at Mesa State
 Feb. 1, 5:30 p.m. — Fort Lewis
 Feb. 2, 5:30 p.m. — Adams State
 Feb. 8, 6 p.m. — at Fort Hays State
 Feb. 9, 5:30 p.m. — at Kearney
 State
 Feb. 16, 6 p.m. — at Chadron State
 Feb. 21, 7:30 p.m. — Doane College



Kelly Pichler



Rusty Hamer

Pichler, Hamer tabbed as Players of the Year, 1990

Along with the Wayne Herald All-Area Volleyball and Football teams this season we have, like in the past, the All-Area Coach of the Year in both volleyball and football and we have the Volleyball Player of the Year and the Football Player of the Year.

Also this year we are adding a Newcomer of the Year award which goes to a player that stepped into the varsity level of playing and shows great promise for the future.

First for the Volleyball Coach of the Year. Paul Giesselmann earns the honor for the second consecutive year. Giesselmann edges Wakefield's Paul Eaton and Allen's Gary Troth for the award.

Winside was the only area team to win 20 games in volleyball and the Wildcats established several school records in this their most successful season ever.

Wakefield also had a very fine year and did much better than what many had projected. Allen set a goal early in the season to go to state and Gary Troth kept his team motivated all year which enabled the Lady Eagles to accomplish their goal.

The Football Coach of the Year Award is a dual award because Winside's Randy Geier and Wayne's Lonnie Ehrhardt are both deserving of the award equally.

Although Ehrhardt watched his team lose the final two games of the season the Blue Devils accomplished many things and Ehrhardt deserves much credit for the team's success.

Geier had his team within a whisker of making the state playoffs, much like the Blue Devils as both teams finished in the 17th position. Sixteen teams of course qualify for the playoffs.

Winside had a very fine year on the gridiron and Geier did a great job of motivating his team from week to week. The Wildcats defense was among the strongest in the area and the offense was propelled by junior Cory Jensen.

The Volleyball Player of the Year Award goes to Winside's Kelly Pichler. Pichler was nothing short of spectacular during the volleyball season doing what ever it took to gain Winside a victory. Pichler displayed very good quickness and soft hands—a must for any good setter.

Pichler edges teammate Jenny Jacobsen and Wayne's Deanna Schluns for the honor. Jacobsen, just a junior will have one more year to prove herself while Schluns ended her volleyball career at Wayne. Schluns had a great year for Wayne was one of the area's most improved players this season.

The Football Player of the Year Award goes to Wayne's Rusty Hamer. Hamer finished his career as a three year starter on both offense and defense and as a punter. Hamer's dependability as a go to guy when you need a yard earned him the respect of being a hard nosed player. His elusiveness in the open field was not coached, but strictly instinct.

Hamer edged out Wakefield's Anthony Brown and Winside's Jeff Gallop for the award. Brown had a 1000 yard plus season but has one more year to make even bigger strides. Gallop finished his high school football career. He is the most talented utility athletes in all of Northeast Nebraska.

Whether you wanted him to play wide receiver, tight end, running back or any defensive position, Gallop did it to the best of his ability which for Winside culminated in a 7-2 season.

The Newcomer of the Year Awards go to Kari Pichler of Winside in volleyball and to Allen's Curtis Oswald. Pichler may be a freshman in status but in the volleyball world her experience is that of a junior as she started in all but one game this year for Giesselmann's Wildcats.

Curtis Oswald is one of those athletes every coach dreams about. He is a very athletic individual who may very well be a prime time player for Allen during the next three years.

BOWLING AT MELODIE LANES

Senior Citizens Bowling
On Tuesday, Nov. 27, 27 senior citizens bowled at Melodie Lanes with the Gilbert Rouse team defeating the Myron Olson team with scores of 5880-5652. High series and games were bowled by Milton Matthew, 528-195; Vern Harder, 516-184; Perry Johnson, 498-192; Dale Gutschall, 496-179; Melvin Magnuson, 489-169; Don Sherbahn, 482-188; Richard Carman, 469-173; Duane Croamer, 464-177; Harry Mills, 463-195; Warren Austin, 463-189; Elmer Roemhildt, 463-182; Ari Brummond, 458-157; Charles Denasia, 450-178.

On Thursday, Nov 29, 22 senior citizens bowled at Melodie Lanes with the Harold Maciejewski team defeating the Elmer Roemhildt team with scores of 5112-4940. High series and games were bowled by Richard Carman, 527-214; Duane Croamer, 519-193; Vern Harder, 510-172; Norman Anderson, 509-183; Perry Johnson, 503-178; Harold Maciejewski, 478-182; Charles Denasia, 477-196; Willard Wiltsie, 474-160; Elmer Roemhildt, 475-184; Winton Wallin, 471-173; Milton Mathew, 457-184.

Go-Go Ladies

	W	L
Lucky Stikers	39	9
Double Shots	29	19
Pin Hitters	29	19
Bowling Belles	23	25
Pin Splinters	22	23 1/2
Rolling Pins	21	27
Golden Gals	15	12 3/2
Road Runners	13	35

High Scores: Diane Miller, 231-536; Lucky Stikers, 698; Double Shots, 2041.
Stella Schultz, 184; Carol Griesch, 516; Tina Dowling, 486; Sharon Junck, 202-488; Evelyn Jarman, 188; Joni Jaeger, 185; Diane Miller, 231-536; Erna Hoffman, 190.

Monday Night Ladies

	W	L
Dave's Body Shop	42	14
Wayne Herald	40	16
Producer's Hybrid	33 1/2	22 1/2
Swans	33 1/2	22 1/2
Cashrats	32	24
Midland Equip.	29 1/2	26 1/2
Hank's Custom Work	27	29
First Bankcard Center	25	31
Tom's Body Shop	21 1/2	34 1/2
Lut Trucking	19	37
Ray's Locker	18	38
Pizza Hut	11	45

High Scores: Cindy Echtenkamp, 223; Cleo Ellis, 545; Producer's Hybrid, 826; Dave's Body Shop, 2647.
Jeanni Tulberg, 482; Lori Langenberg, 187; Linda Gamble, 204-498; Sandy Grono, 181-516; Kathy Hochstein, 191-524; Peg Hank, 180; Cleo Ellis, 192-181-545; Rita McLean, 186-528; Sandra Gathje, 494; Joni Holdorf, 194-511; Deb Erdman, 495; Jeannette Swanson, 189-518; Sue Denton, 510; Cindy Echtenkamp, 223-493; Bev Sturm, 190; Cheryl Henschke, 213-505; Deb Hank, 3-7-10 split.

City League

	W	L
Black Knight	32	20
L & B Farms	28	24
Wayne Greenhouse	28	24
Wayne Vets Club	28	24
K.P. Construction	27 1/2	24 1/2
Trio Travel	27 1/2	23 1/2
Clarkson Service	27	25
Wood Plumbing	27	25
Patel Blue Ribbon	24	28
Ellington Motors	22	30
Melodie Lanes	21 1/2	30 1/2
Pac-N-Save	19 1/2	32 1/2

High Scores: Doug Rose, 246-665; K.P. Construction, 981-2686.
Bryan Park, 233; Doug Rose, 220; Mark Klein, 213; Darin Barner, 224; Bryan Denkiau, 218; Loren Hammer, 213; Steve McLagan, 207-215-906; Jim, 203; Kevin Peterson, 227-601; Larry Skokan, 241.

Hit 'N Misses

	W	L
T.W.J. Foods	37	19
Wayne Campus Shop	37	19
Patel Blue Ribbon	32	24
Wilson Seed	31	25
Melodie Lanes	30	26
Pat's Beauty Salon	27	29
Croce Repair	26	30
KTCH	25	31
Greenview Fams	18	38
The Windmill	17	39

High Scores: Sue Denton, 234; Fran Nichols, 558; KTCH, 910-2564.
Essie Kathol, 191-485; Tammy Meier, 189-519; Vicky Skokan, 189; June Baler, 195-517; Josie Bruns, 504; Sandy Grono, 181; Wilma Fork, 198; Addie Jorgensen, 197-503; Bonnie Mohlfeld, 489; Fran Nichols, 221; Judy Paynter, 485; Jackie Nicholson, 488; Sue Denton, 549; Nancy Clark, 181-493; Sue Thies, 180-191-533; Sandra Gathje, 492; Sandra Gathje, 6-7-8-9 split; Essie Kathol, 3-10 split; Vicky Skokan, 9-10 split; Ardie Sommerfeld, 3-6-8-10 split.

Wednesday Night Owls

	W	L
4th Jul 1	36	20
Melodie Lanes	36	20
Comert State Bank	36	20
Dekalb	31 1/5	24 1/2
Tom's Body Shop	28	28
Agri-King	27	29
Electrolux Sales	26	30
Logan Valley	26	30
The Windmill	25	31
Ray's Locker	24	32
4th Jul II	23 1/2	32 1/2
Wacker Farm Store	17	39

High Scores: Brad Jones, 244; Doug Rose, 693; Electrolux Sales, 1000; 4th Jul 1, 2870.
Don Leighton, 202; Mike Groz, 209-201; Elmer Peter, 202; Doug Rose, 234-227-232; Verneal Maroz, 214; Steve Muir, 220; Kim Baker, 204-222-212-638; Rick Bowers, 200; Mike Sprouts, 209; Tom Anderson, 233; Larry Echtenkamp, 213; Brad Jones, 210-210-664.

Thursday Night Couples

	W	L
Sipp-Twite	33	15
Heithold-Sturm	31	17
Spain-Rahn	28	20
John-Meier-Sever	25	23
Austin-Brown	24 1/2	23 1/2
Fuelberth-Li	22	26
Hansen-Metz	21	27
Bilstein & Friends	20	28
Crist-Wessel-Heldt	18	30
Carm-Oetra-Schroe	17 1/2	30 1/2

High Scores: Herb Hansen, 194; Anita Fuelberth, 208-551; Heithold-Sturm, 651-1818.
Bev Sturm, 185-493; Anita Fuelberth, 189.

Junior League

	W	L
Cougars	18	19
Gutter Dusters	18 1/2	9 1/2
Knock Outs	17 1/2	10 1/2
Strike Outs	16 1/2	12 1/2
877 Team	15	13
Nasty Boys	14	14
Alr Force 3	14	14
R.A.T.	11 1/2	16 1/2
Blastin Bowlers	8 1/2	19 1/2
Ultra-Pink Bowler's	6 1/2	21 1/2

High Scores: Tyler Endcott, 155; Jennifer Hank,

154-402; Ryan Newman, 395; Gutter Dusters, 836-1568.
Stacy Varley, 149-136-366; Jennifer Hank, 133; Amy Guilt, 113-305; Karl Schindler, 111-309; Tyler Endcott, 125-384; Ryan Pick, 100; Nick Vanhorn, 128-332; Rick Endcott, 114-302; Adam Endcott, 135-341; Eric McLagan, 148-328; Nikki Newman, 128-123-354; Josh Starzi, 110; Carl Samuelson, 118; Ryan Wheeler, 131; Todd Griesch, 124-348; Chris Johnson, 106-308; Troy Bruns, 112-304; Troy Jeffrey, 111; Ryan Newman, 150-134; Ryan Pick, 4-7-10 split.



STATE NATIONAL BANK & TRUST COMPANY
116 West 1
Wayne, NE
375-1130

KTCH
1590 AM
105 FM

Make Us Your Headquarters For
Prescriptions and Photo Supplies
GRIESS REXALL



SAN JOSE ST. VS. CENTRAL MICHIGAN
OFFICE CONNECTION

APPLE COMPUTERS

1909 VICKI LANE 613 MAIN STREET
 NORFOLK, NE. 68701 WAYNE, NE. 68787
 (402) 379-2692 (402) 375-1107



Authorized Dealer

For all your sportswear and sporting needs!



WAYNE SPORTING GOODS

219 Main Street
 Wayne, Nebraska
 Phone 375-3577

CLEVELAND VS. HOUSTON

FREDRICKSON OIL COMPANY & CONVENIENCE STORE

ROUTE 2 HWY 15 NORTH
 WAYNE PHONE 375-3535
 TOLL FREE 800-672-3313

CHICAGO BEARS VS. WASHINGTON

VARSIITY LOUNGE



Where it Happens!
 109 Main Street Wayne 375-5041

MINNESOTA VS. NEW YORK GIANTS

COUPON GOOD FOR 1/2 PRICE DRINK

NEW ORLEANS VS. LOS ANGELES RAMS

Hardee's

All kinds of good stuff.™
 602 Main Street Wayne, NE

FASTEST, FRIENDLIEST SERVICE

For all your printing needs...

THE WAYNE HERALD

NEW ENGLAND VS. PITTSBURGH

THE WAYNE HERALD FOOTBALL CONTEST

FIRST PLACE \$15 IN FOOTBALL BUCKS

SECOND PLACE \$8 IN FOOTBALL BUCKS

CONTEST RULES

One football game has been placed in each of the ads on this page. Indicate the winner by writing in the name of the winning team on the proper line on the entry blank. No scores. Just pick the winners, or ties. In case of tie, write "tie." Use the entry blank below or a copy of equal size.

Write in your guess of the score for both teams. This will only be used in case of a tie. The person that comes closest to the score will be the winner.

One entry only to each contestant, but members of a family may each submit an entry. Entries should be brought or mailed to The Wayne Herald office not later than 5 p.m., Friday, or if mailed, should not be postmarked later than 5 p.m. Friday. You need not be a subscriber of the Herald to be eligible for prizes.

The winners will be announced weekly on the Thursday sports page of The Wayne Herald. Employees of the Herald and their immediate families are ineligible. Judges' decisions will be final in every case.

Wayne Sporting Goods _____
 Office Connection _____
 NE Nebr. Ins. Agency _____
 Pac 'N' Save _____
 Ellingson Motors, Inc. _____
 Clarkson Service _____
 KTCH _____
 Sav-Mor Pharmacy _____
 Logan Valley Impl. _____
 The Wayne Herald _____
 Hardee's _____
 Varsity Lounge _____
 Fredrickson Oil Co. _____

NAME _____
 ADDRESS _____
 CITY _____
 STATE _____ ZIP _____

DEADLINE FOR ENTRIES — FRIDAY, DECEMBER 7 AT 5 P.M.

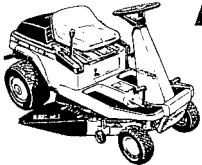
TIE BREAKER —

Guess How Many Points Will Be Scored Combined In Every Pro Game.

List Total Only. _____

SAN FRANCISCO VS. CINCINNATI

CHOOSE JOHN DEERE AND SAVE \$200



Whether your riding mower of choice is a John Deere EX or RX, you'll save a quick \$200. We've got full clearance prices on mowers you'll fall for. Better hurry; inventory is limited.


Buy now... with no payment until next April when you use John Deere Credit.

Nothing Runs Like a Deere

LOGAN VALLEY IMPLEMENT
 EAST HWY. 35 - WAYNE, NEBRASKA 68787
 WATTS LINE 1-800-343-3309 TELEPHONE 375-3325

It Pays To Compare Coverage & Rates

NORTHEAST NEBRASKA INSURANCE AGENCY



111 West 3rd Wayne Phone 375-2696
 Auto-Home-Health-Life-Motorcycles

LOS ANGELES RAIDERS VS. DETROIT

PAC 'N' SAVE DISCOUNT SUPERMARKETS

HOME OWNED & OPERATED

- WEST HIWAY 35 •
- WAYNE • 375-1202 •

Mon. - Sat. 7:30 - 10 Sun. 8 - 8

DENVER VS. KANSAS CITY

PHILADELPHIA VS. MIAMI

YOUR FULL LINE GM DEALER

Ellingson MOTORS, INC.

CADILLAC - GMC - BUICK - PONTIAC
 OLDSMOBILE - CHEVROLET

375-2355 WAYNE, NE WEST 1ST STREET

LET US TAKE CARE OF ALL YOUR CAR'S MECHANICAL NEEDS



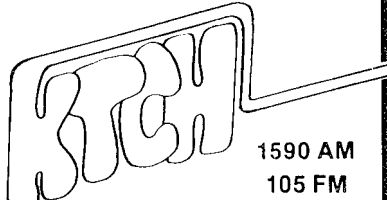
LIFETIME MUFFLER, BRAKES, TUNE-UPS, SHOCKS, TIRE REPAIR

CLARKSON SERVICE

7TH & MAIN WAYNE 375-4420

SEATTLE VS. GREEN BAY

BUFFALO VS. INDIANAPOLIS



1590 AM
 105 FM

PHOENIX VS. ATLANTA

EVERY DAY OF THE WEEK DOUBLE PRINT PHOTO PROCESSING SPECIAL

24 PRINTS/12 EXP. ROLL.....	\$2.67
30 PRINTS/15 EXP. DISC.....	\$3.57
48 PRINTS/24 EXP. ROLL.....	\$4.97
72 PRINTS/36 EXP. ROLL.....	\$6.97

C-41 PROCESS ONLY.
 GOOD ON DEVELOP AND PRINT PHOTO PROCESSING ORDERS

Sav-Mor Pharmacy

1022 Main St.
 Wayne, NE 68787
 (402) 375-1444